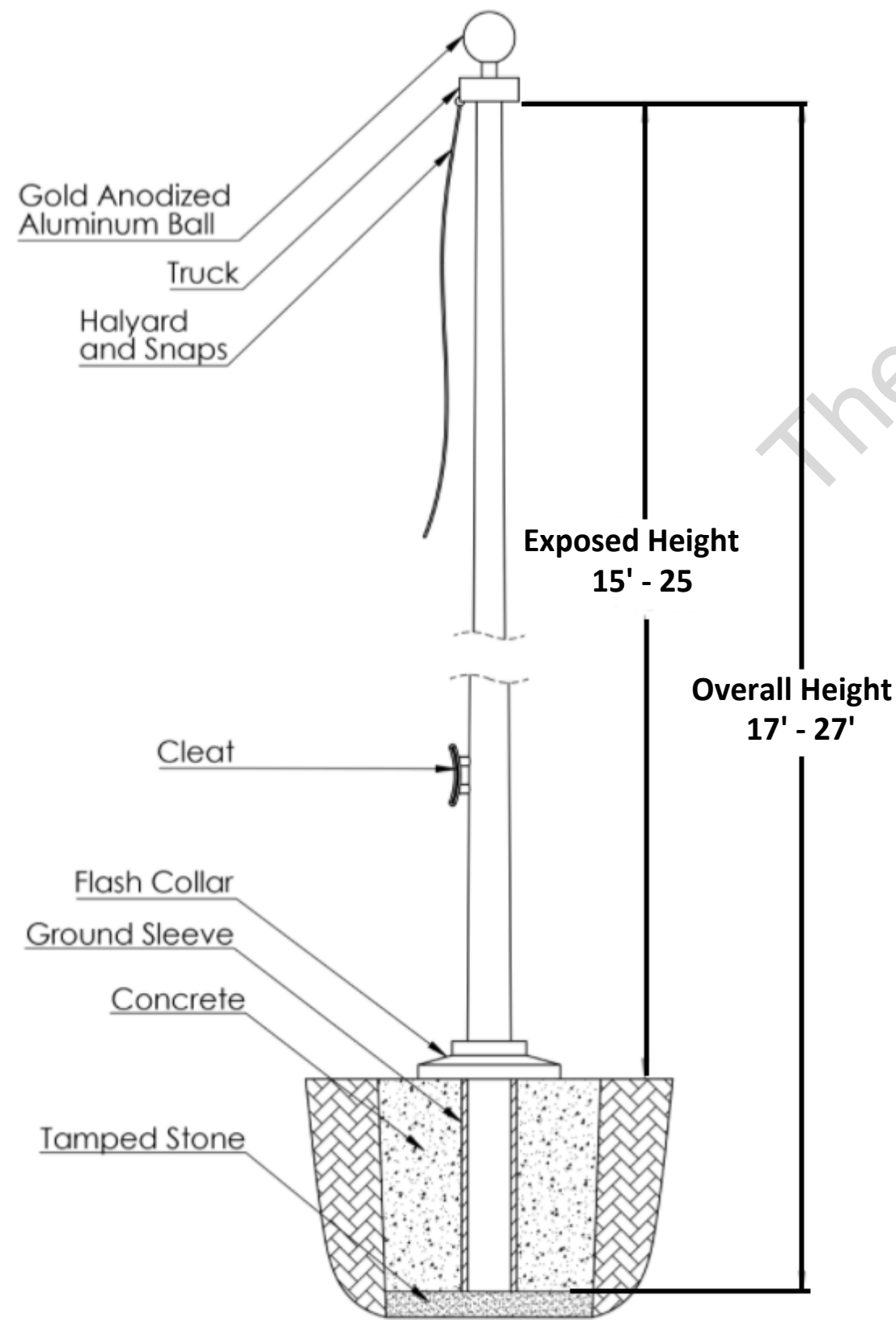
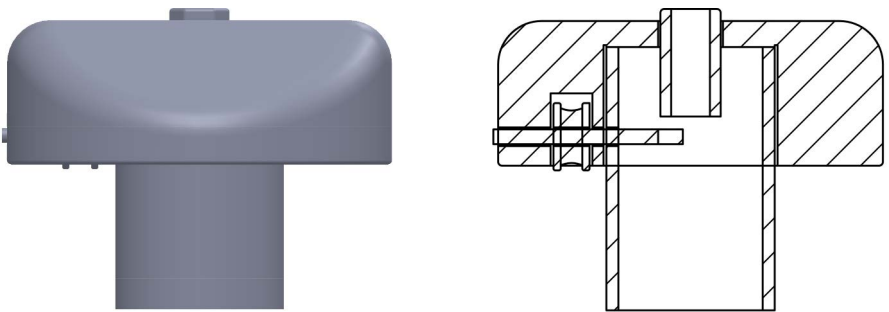


The Flagpole Company  
221 N. Main St.  
Brooklyn, MI 49230  
800.805.9728  
www.flagpolecompany.com

Model 15-FGR



External Revolving  
Fiberglass Truck



Specifications and Accessories

Above Ground Height	15'	20'	25'
Overall Height	17'	22'	27'
Butt Diameter	3.85"	4"	4.25"
Top Diameter	2.75"	2.75"	2.75"
Gold Anodized Ball	4"	4"	4"
Truck	F/G	F/G	F/G
Nylon Snaps	1 pair	1 pair	1 pair
Polyester Halyard	30' of #7	40' of #7	#7
Nylon Cleat	5.5"	5.5"	5.5"
Flash Collar	12"	12"	12"
Fiberglass Ground Sleeve	2' X 5'	2' x 5'	2' x 5'
Pole Weight (lbs.)	18	23	35
Shipping Weight (lbs.)	30	41	52
Yardarm	N/A	N/A	6'
Standard Flag Size	3' x 5'	3' x 5'	4' x 6'



## Specifications

Provide a Fiberglass Reinforced Composite (FRC) Ground set flagpole Model # 15-FGR The flagpole shall have a mounting height of 15' and 2' below grade for an overall length of 17'.

The butt diameter shall be 3.85" and the top diameter 2.75". The pole weight shall be approximately 18 lbs. and a total shipping weight of 30lbs.

The flagpole shall be manufactured of fiberglass woven roving and polyester resin with 75% of the reinforcing fibers oriented in the axial plane for maximum stiffness and 25% in the radial plane for required hoop strength. Load calculations shall be based on AASHTO and NAAMM standards with the pole designed with a two to one (2:1) safety factor for 65 mph winds, unflagged, with a 1.3 gust factor.

The flagpole shall have an Entasis taper and shall be void of vertical mold seams.

The flagpole shall be sanded smooth and coated with a high gloss Aliphatic Polyurea coating system which provides extended UV protection and weatherability.

**Standard colors include:** White, Black, Bronze, Faux-Luminum, & Metallic Bronze

Aura Series - Model #15R	Standard Fittings:		Project:
15' Above Grade Height	4" Gold Anodized Ball	30' of #7 Polyester Halyard	
17' Overall Height	Cast FG Stationary Truck	12" Flash Collar	Location:
Top Diameter - 2.75"	1 pair of Nylon Snaps	5.5" Nylon Cleat	
Butt Diameter - 3.85"	2'x5" Ground Sleeve		Date:

