

5" gold anodized
aluminum ball

Model EH-305156

THE FLAGPOLE
COMPANY®

The Flagpole Professionals!



Single sheave truck,
cast aluminum revolving type

(1) 5/16" dia. halyard (#10 poly)

(2) Swivel snaps with
vinyl covers

(1) 9" Cast aluminum cleat

Spun aluminum flash collar

3000 PSI concrete
(supplied by others)

Hardwood wedges
(supplied by others)

Dry sand tightly tamped
(supplied by others)

Foundation sleeve -16 ga
galvanized steel

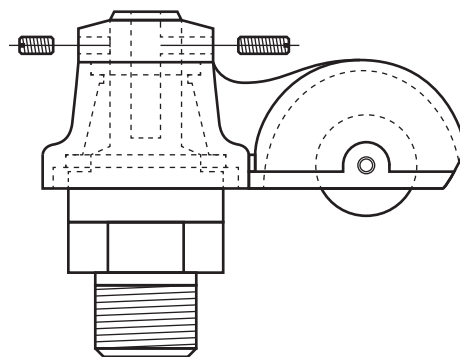
Steel centering wedges

3/16" Steel base plate

3/16" Steel support plate
welded to ground spike

3/4" Lightning ground spike

Exposed length: 30'-0"
Tapered portion: 17'-3"
Overall length: 33'-0"
Cleat height: 5'-0"
Straight portion: 15'-9"
Foundation: 3'-6"
3'-0"
6"
12"
25"



Single Sheave Truck Detail

Revolving truck
Cast aluminum body
Stainless steel ball bearings
Nylon sheave
Cast aluminum spindle

Project:	Date:	Exposed Height __ 30'-0"	Ground Set Tapered	The Flagpole Company
Location:	Job:	Overall Height __ 33'-0"	Aluminum Flagpole	221 N. Main St.
Contractor:	Revision:	Butt Diameter __ 5"	ALLOY 6063T6	Brooklyn, MI 49230
Customer:		Top Diameter __ 3"	80 grit polish	800.805.9728
		Wall Thickness __ .156"	FINISH:	Est. 2000
		Ships in 1 section		