

THE FLAGPOLE COMPANY[®]

The Flagpole Professionals!



Model EH-3051562

5" gold anodized aluminum ball

Single sheave truck, cast aluminum revolving type

(1) 5/16" dia. halyard (#10 poly)

(2) Swivel snaps with vinyl covers

(1) 9" Cast aluminum cleat

Spun aluminum flash collar

3000 PSI concrete (supplied by others)

Hardwood wedges (supplied by others)

Dry sand tightly tamped (supplied by others)

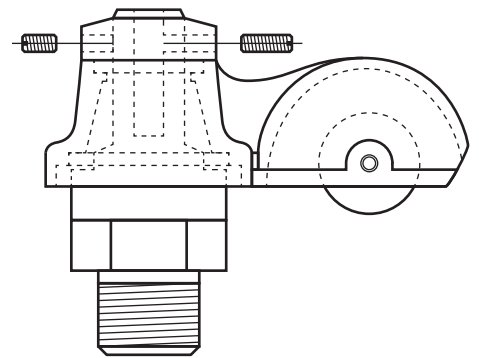
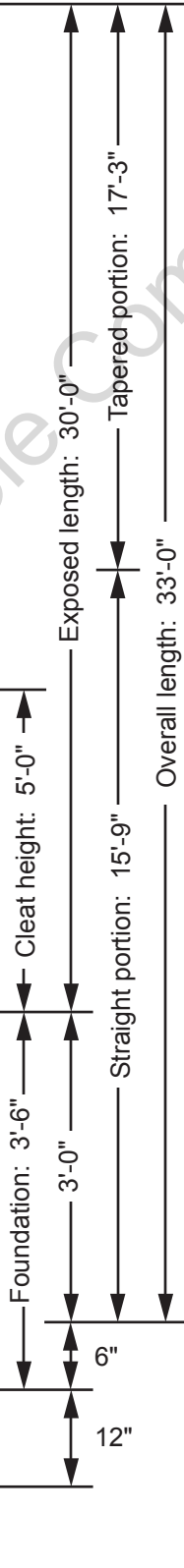
Foundation sleeve -16 ga galvanized steel

Steel centering wedges

3/16" Steel base plate

3/16" Steel support plate welded to ground spike

3/4" Lightning ground spike

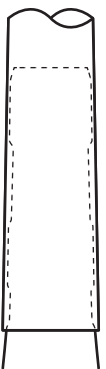


Single Sheave Truck Detail

- Revolving truck
- Cast aluminum body
- Stainless steel ball bearings
- Nylon sheave
- Cast aluminum spindle

Each section matched marked for field assembly. Exposed portion of jam sleeve must be well lubricated prior to assembly.

1-1/2" maximum shop gap allowed for field fitting (ram for tight joint)



Project:	Date:	Exposed Height __ 30'-0"	Ground Set Tapered Aluminum Flagpole ALLOY 6063T6 80 grit polish	The Flagpole Company 221 N. Main St. Brooklyn, MI 49230 800.805.9728
Location:	Job:	Overall Height __ 33'-0"		
Contractor:	Revision:	Butt Diameter __ 5"	FINISH:	
Customer:		Top Diameter __ 3"		
		Wall Thickness __ .156"		
		Ships in 2 sections		