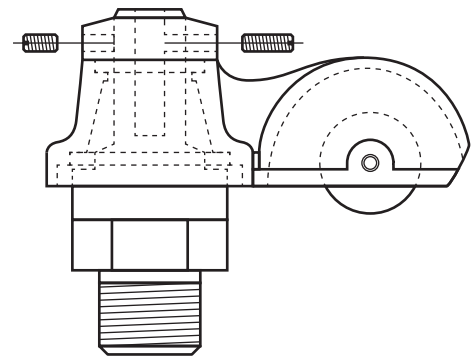
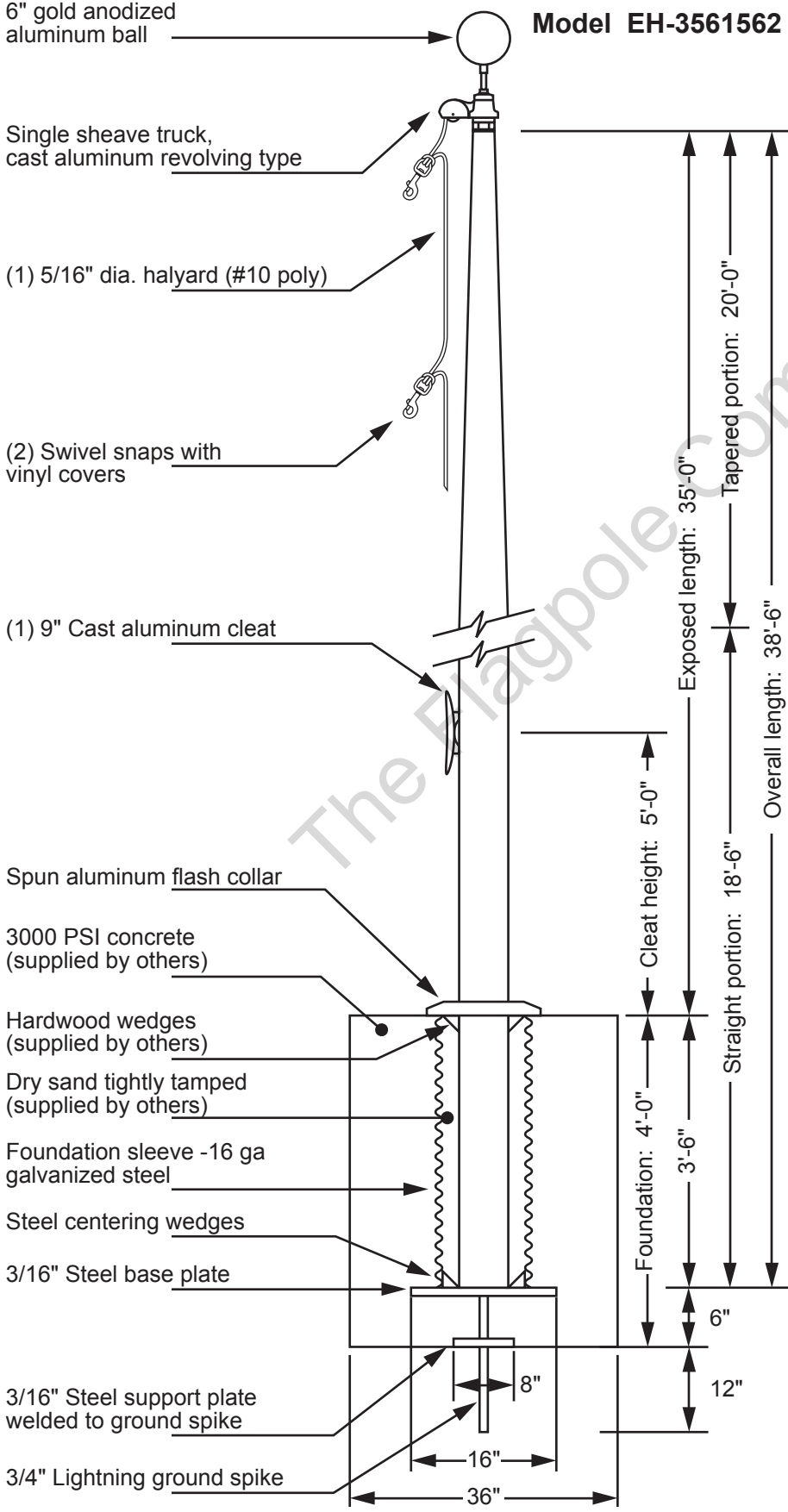


# THE FLAGPOLE COMPANY<sup>®</sup>

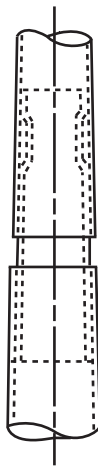
The Flagpole Professionals!



**Single Sheave Truck Detail**  
 Revolving truck  
 Cast aluminum body  
 Stainless steel ball bearings  
 Nylon sheave  
 Cast aluminum spindle

2 Piece Shaft. Each section matched marked for field assembly. Exposed portion of jam sleeve must be well lubricated prior to assembly.

1-1/2" maximum shop gap allowed for field fitting (ram for tight joint)



Project:	Date:	Exposed Height __ 35'-0"	Ground Set Tapered Aluminum Flagpole ALLOY 6063T6 80 grit polish	The Flagpole Company 221 N. Main St. Brooklyn, MI 49230 800.805.9728 <i>The Flagpole Professionals!</i>
Location:	Job:	Overall Height __ 38'-6"		
Contractor:	Revision:	Butt Diameter __ 6"	FINISH:	
Customer:		Top Diameter __ 3-1/2"		
		Wall Thickness __ .156"		
		Ships in 2 Sections		