

THE FLAGPOLE COMPANY®

The Flagpole Professionals!



10" gold anodized
aluminum ball

Model EH-5010188

Double sheave truck,
cast aluminum revolving type

(1) 5/16" dia. halyard (#10 poly)

(3) Swivel snaps with
vinyl covers

(1) 9" Cast aluminum cleat

Spun aluminum flash collar

3000 PSI concrete
(supplied by others)

Hardwood wedges
(supplied by others)

Dry sand tightly tamped
(supplied by others)

Foundation sleeve -16 ga
galvanized steel

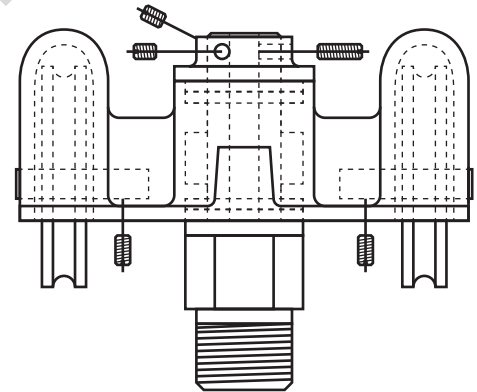
Steel centering wedges

3/16" Steel base plate

3/16" Steel support plate
welded to ground spike

3/4" Lightning ground spike

Exposed length: 50'-0"
Tapered portion: 37'-2"
Overall length: 55'-0"
Cleat height: 5'-0"
Straight portion: 17'-10"
Foundation: 5'-6"
5'-0"
6"
12"
10"
20"
60"



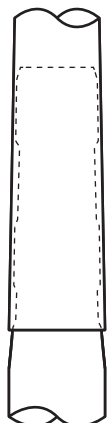
Double Sheave Truck Detail

Revolving truck
Cast aluminum body
Stainless steel ball bearings
Cast aluminum sheaves
Cast aluminum spindle

All shafts with overall
length of more than
38'-6" are shipped in
multiple sections.

Each section is matched
and marked for field
assembly. Exposed
portion of jam sleeve
must be **well lubricated**
prior to assembly.

1-1/2" maximum gap
allowed for field fitting.



Project:	Date:	Exposed Height __ 50'-0"	Ground Set Tapered Aluminum Flagpole ALLOY 6063T6 80 grit polish	The Flagpole Company 221 N. Main St. Brooklyn, MI 49230 800.805.9728 <small>The Flagpole Professionals! Est. 2000</small>
Location:	Job:	Overall Height __ 55'-0"		
Contractor:	Revision:	Butt Diameter __ 10"	FINISH:	
Customer:		Top Diameter __ 4"		
		Wall Thickness __ .188"		
		Ships in 3 sections		