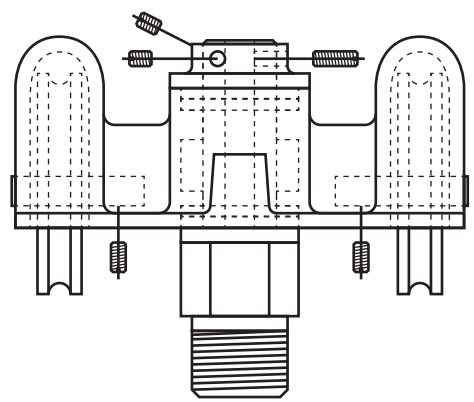
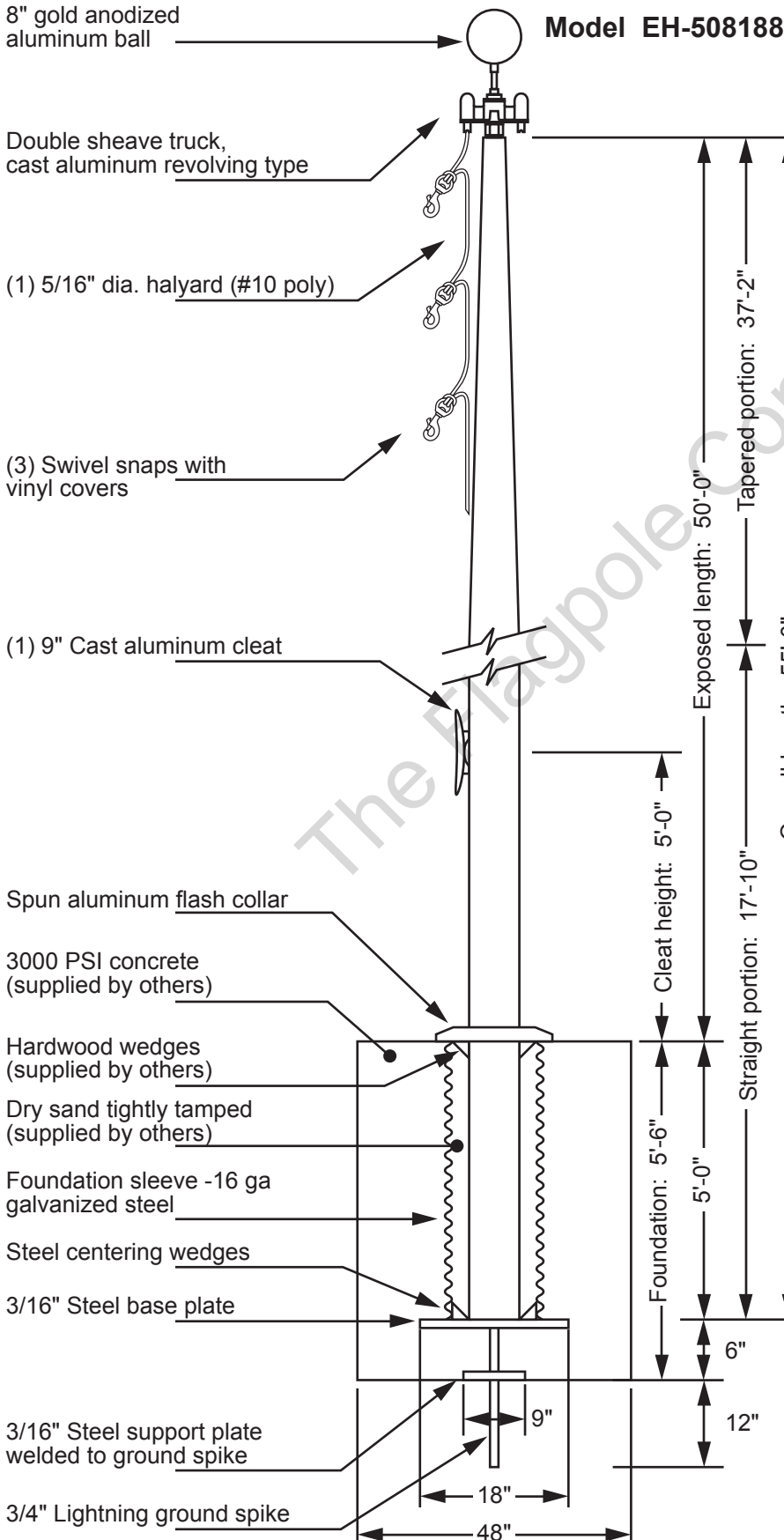


THE FLAGPOLE COMPANY[®]

The Flagpole Professionals!

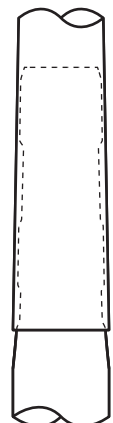


Double Sheave Truck Detail
 Revolving truck
 Cast aluminum body
 Stainless steel ball bearings
 Cast aluminum sheaves
 Cast aluminum spindle

All shafts with overall length of more than 38'-6" are shipped in multiple sections.

Each section is matched and marked for field assembly. Exposed portion of jam sleeve must be **well lubricated** prior to assembly.

1-1/2" maximum gap allowed for field fitting.



Project:	Date:	Exposed Height __ 50'-0"	Ground Set Tapered Aluminum Flagpole ALLOY 6063T6 80 grit polish	The Flagpole Company 221 N. Main St. Brooklyn, MI 49230 800.805.9728 <small>The Flagpole Professionals!</small>
Location:	Job:	Overall Height __ 55'-0"		
Contractor:	Revision:	Butt Diameter __ 8"	FINISH:	<small>Est. 2000</small>
Customer:		Top Diameter __ 3-1/2"		
		Wall Thickness __ .188"		
		Ships in 3 sections		