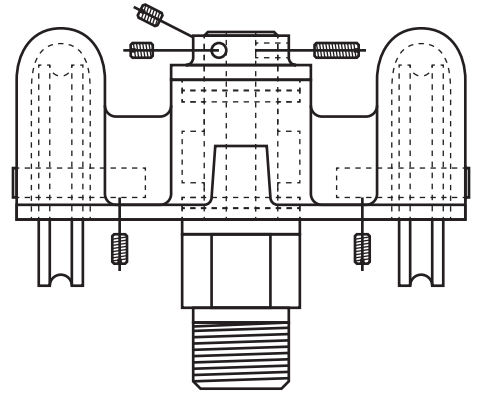
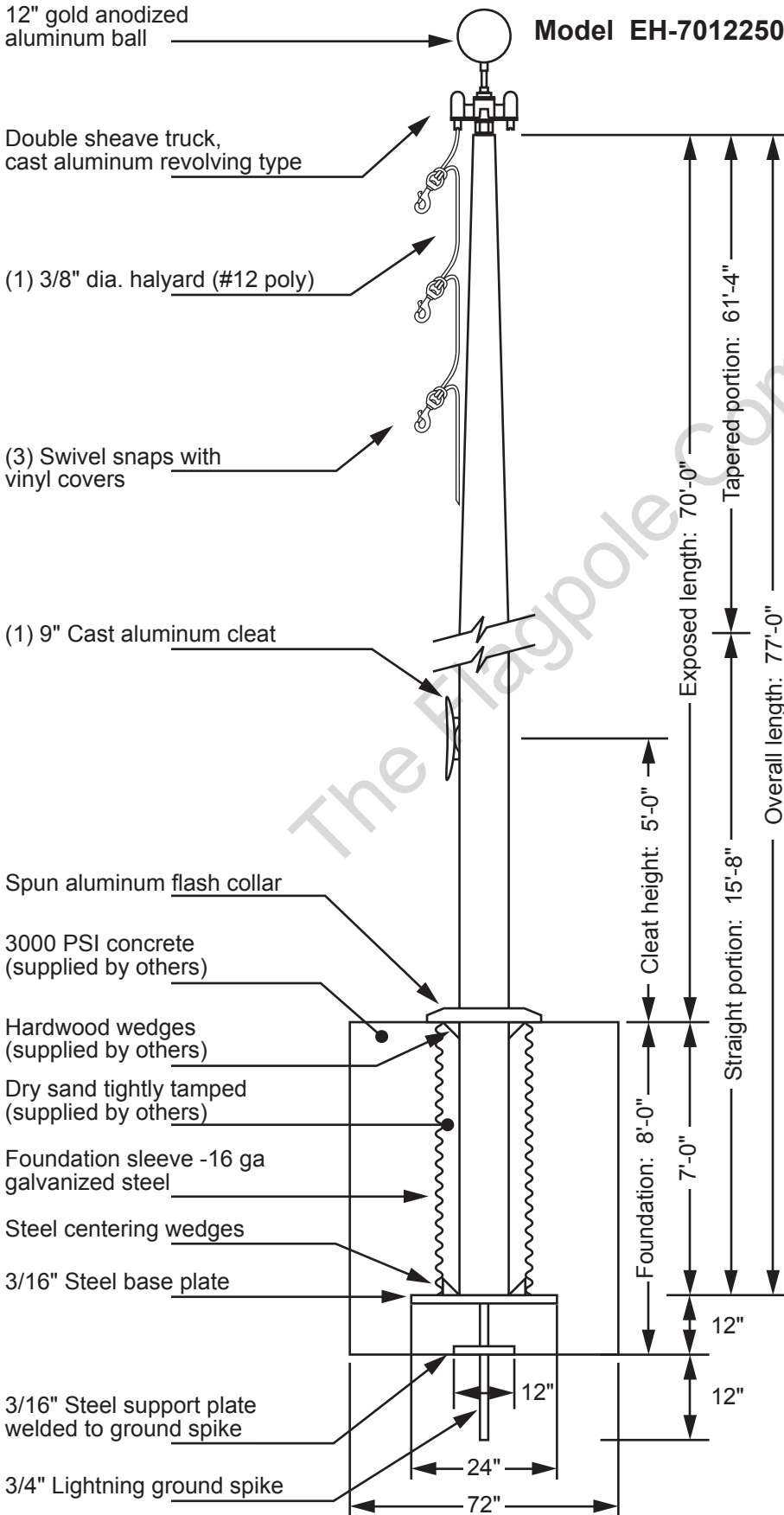


# THE FLAGPOLE COMPANY<sup>®</sup>

*The Flagpole Professionals!*



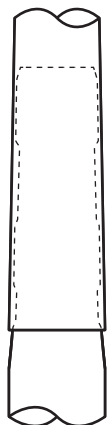
### Double Sheave Truck Detail

- Revolving truck
- Cast aluminum body
- Stainless steel ball bearings
- Cast aluminum sheaves
- Cast aluminum spindle

All shafts with overall length of more than 38'-6" are shipped in multiple sections.

Each section is matched and marked for field assembly. Exposed portion of jam sleeve must be **well lubricated** prior to assembly.

1-1/2" maximum gap allowed for field fitting.



Project:	Date:	Exposed Height ___ 70'-0"	Ground Set Tapered Aluminum Flagpole ALLOY 6063T6 80 grit polish	The Flagpole Company 221 N. Main St. Brooklyn, MI 49230 800.805.9728 <small>The Flagpole Professionals!</small>
Location:	Job:	Overall Height ___ 77'-0"		
Contractor:	Revision:	Butt Diameter ___ 12"	FINISH:	<small>Est. 2000</small>
Customer:		Top Diameter ___ 4"		
		Wall Thickness ___ .250"		
		Ships in 3 sections		