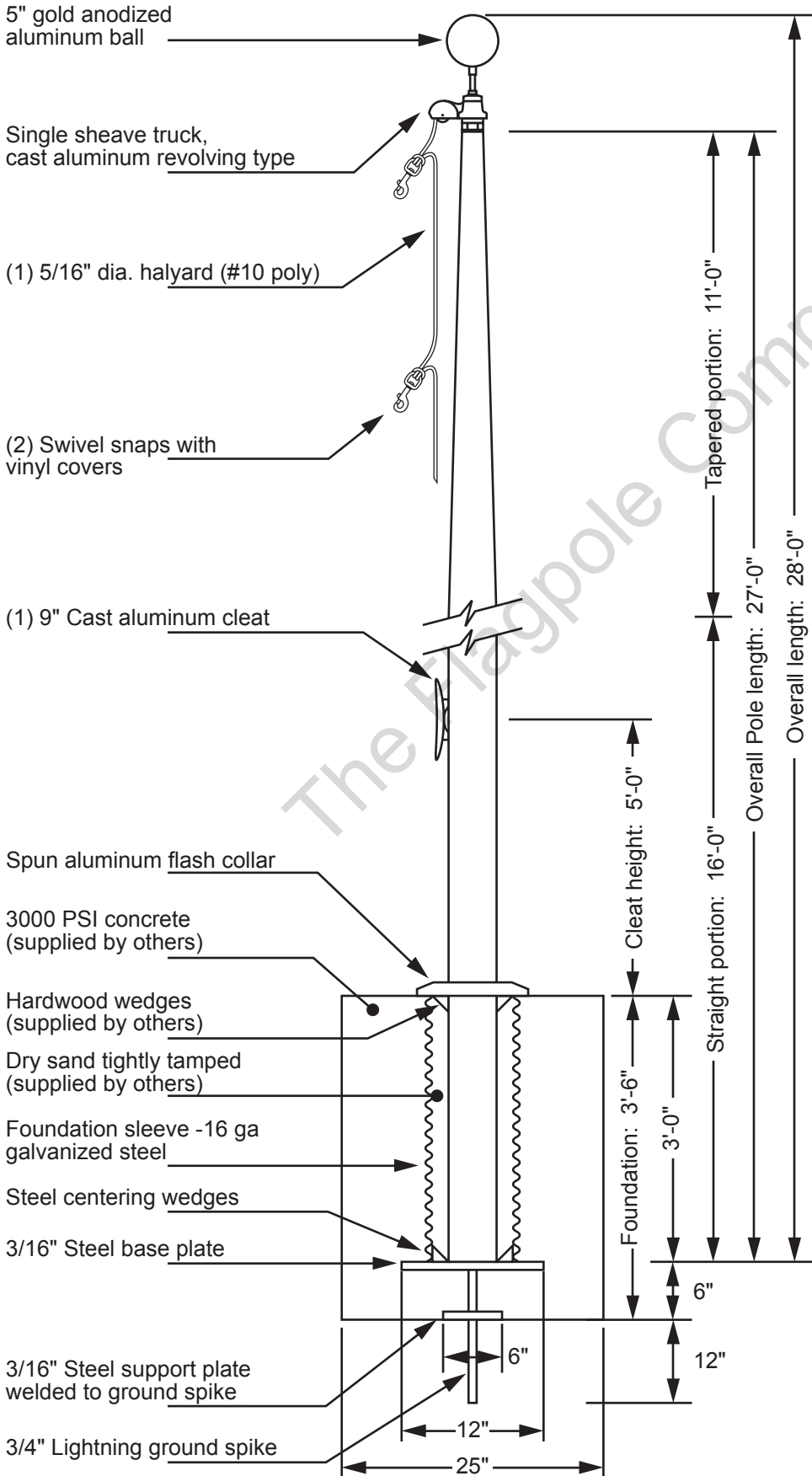


Model EHH-256250

THE FLAGPOLE COMPANY®

The Flagpole Professionals!



5" gold anodized aluminum ball

Single sheave truck, cast aluminum revolving type

(1) 5/16" dia. halyard (#10 poly)

(2) Swivel snaps with vinyl covers

(1) 9" Cast aluminum cleat

Spun aluminum flash collar

3000 PSI concrete (supplied by others)

Hardwood wedges (supplied by others)

Dry sand tightly tamped (supplied by others)

Foundation sleeve -16 ga galvanized steel

Steel centering wedges

3/16" Steel base plate

3/16" Steel support plate welded to ground spike

3/4" Lightning ground spike

Tapered portion: 11'-0"

Overall Pole length: 27'-0"

Overall length: 28'-0"

Cleat height: 5'-0"

Straight portion: 16'-0"

Foundation: 3'-6"

3'-0"

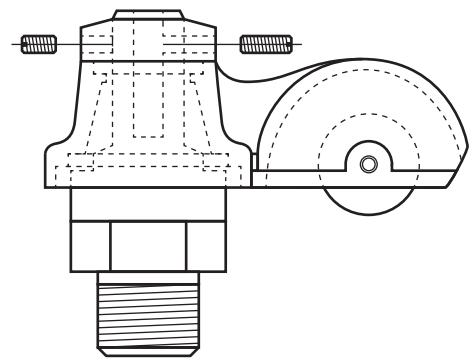
6"

12"

6"

12"

25"



Single Sheave Truck Detail

- Revolving truck
- Cast aluminum body
- Stainless steel ball bearings
- Nylon sheave
- Cast aluminum spindle

Project:
Location:
Contractor:
Customer:

Date:
Job:
Revision:

Exposed Height __ 25'-0"
Overall Height __ 28'-0"
Butt Diameter __ 6"
Top Diameter __ 3 1/2"
Wall Thickness __ .250"
Ships in 1 section

Ground Set Tapered Aluminum Flagpole ALLOY 6063T6 80 grit polish

FINISH:

The Flagpole Company
221 N. Main St.
Brooklyn MI 49230
800.805.9728

