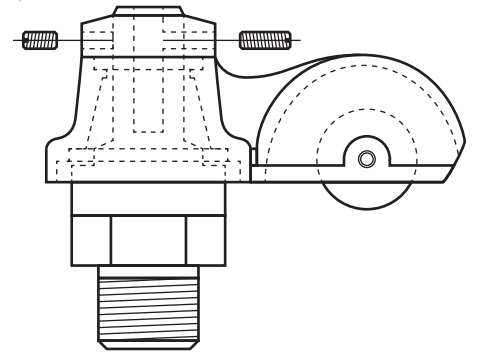
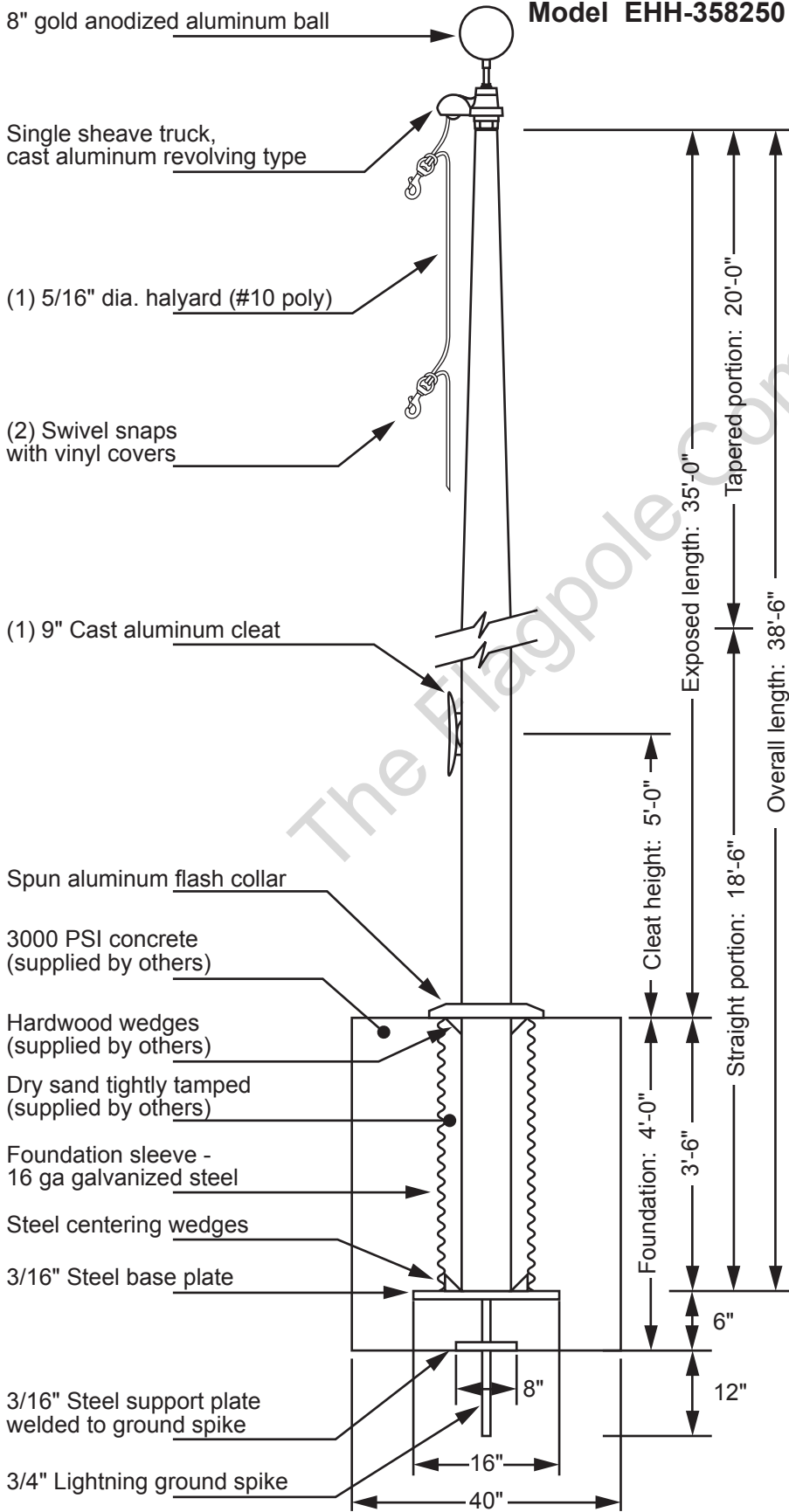


# THE FLAGPOLE COMPANY<sup>®</sup>

*The Flagpole Professionals!*

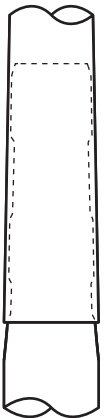


## Single Sheave Truck Detail

Revolving truck  
Cast aluminum body  
Stainless steel ball bearings  
Nylon Sheave  
Cast aluminum spindle

Each section matched and marked for field assembly. Exposed portion of jam sleeve must be **well lubricated** prior to assembly.

1-1/2" maximum shop gap allowed for field fitting.



|             |           |                          |                                      |                                    |
|-------------|-----------|--------------------------|--------------------------------------|------------------------------------|
| Project:    | Date:     | Exposed Height __ 35'-0" | Ground Set Tapered Aluminum Flagpole | The Flagpole Company               |
| Location:   | Job:      | Overall Height __ 38'-6" | ALLOY 6063T6                         | 221 N. Main St.                    |
| Contractor: | Revision: | Butt Diameter __ 8"      | 80 grit polish                       | Brooklyn, MI 49230                 |
| Customer:   |           | Top Diameter __ 3-1/2"   | FINISH:                              | 800.805.9728                       |
|             |           | Wall Thickness __ .250"  |                                      | <i>The Flagpole Professionals!</i> |
|             |           | Ships in 2 sections      |                                      |                                    |