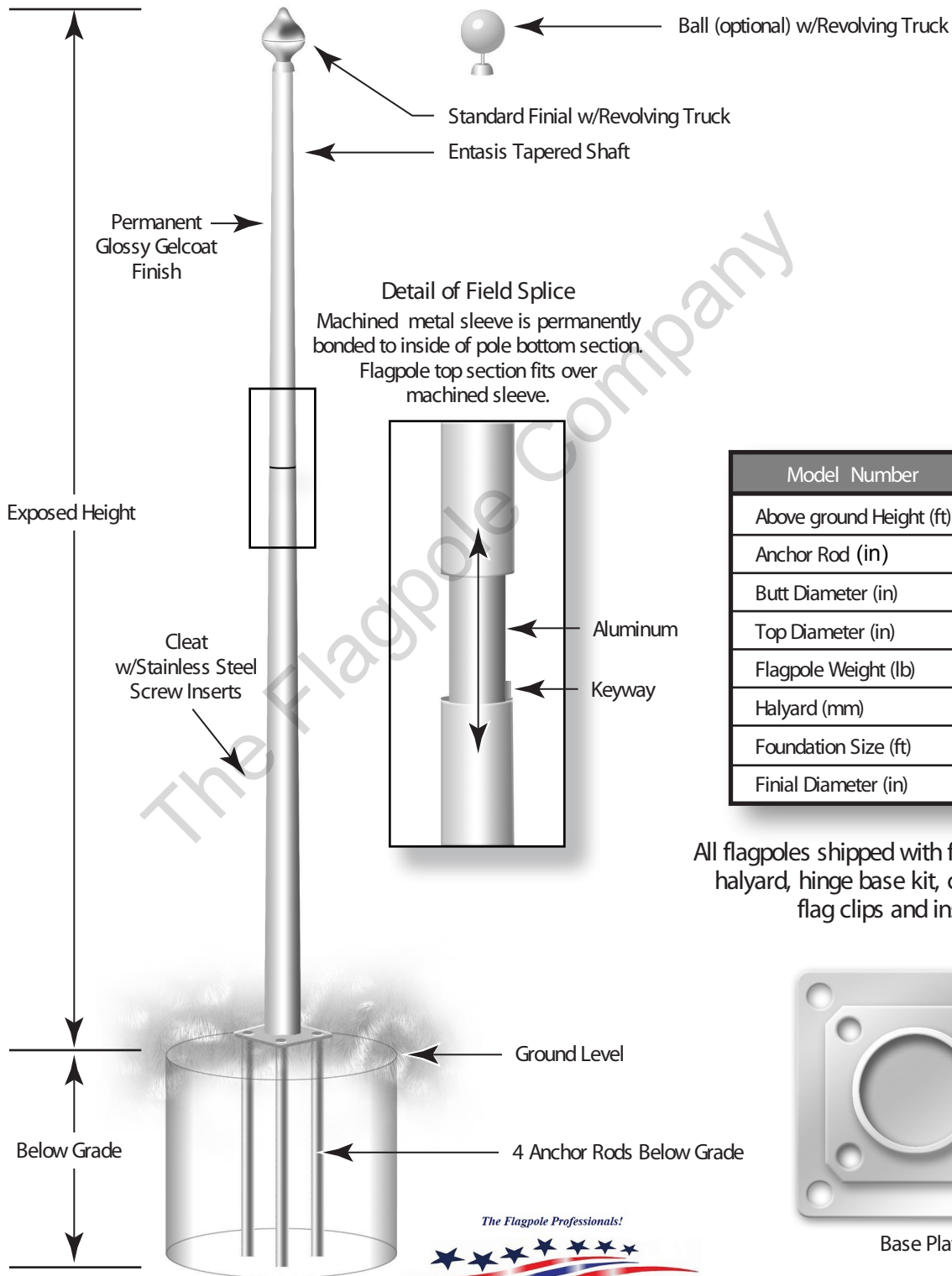


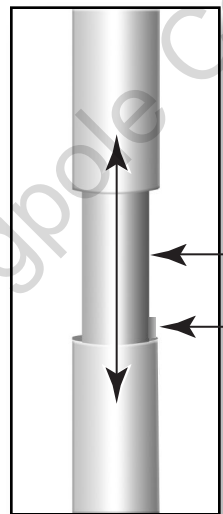
The Flagpole Company
 PO Box 765
 221 N. Main St.
 Brooklyn, MI 49230
 800.805.9728
 www.theflagpolecompany.com



Hinge Base External Flagpoles 50 & 60 feet

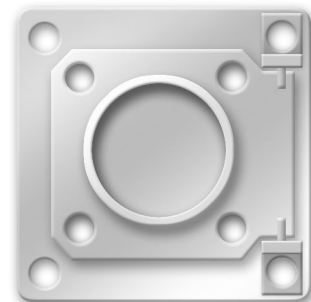


Detail of Field Splice
 Machined metal sleeve is permanently bonded to inside of pole bottom section. Flagpole top section fits over machined sleeve.



Model Number	HB 50	HB 60
Above ground Height (ft)	50	60
Anchor Rod (in)	31 1/2"	31 1/2"
Butt Diameter (in)	7	7
Top Diameter (in)	2.5	2.5
Flagpole Weight (lb)	198	231
Halyard (mm)	5.5	5.5
Foundation Size (ft)	2.5 x 5	2.5 x 6
Finial Diameter (in)	8	8

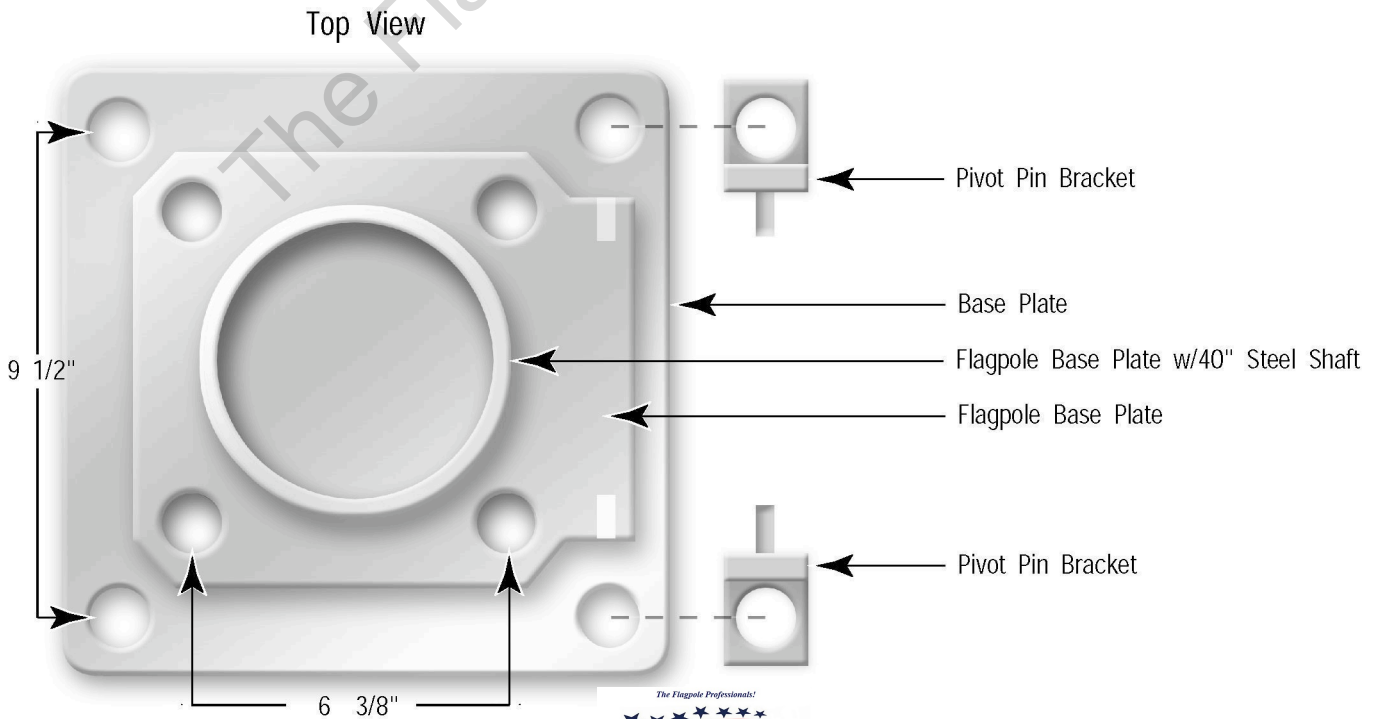
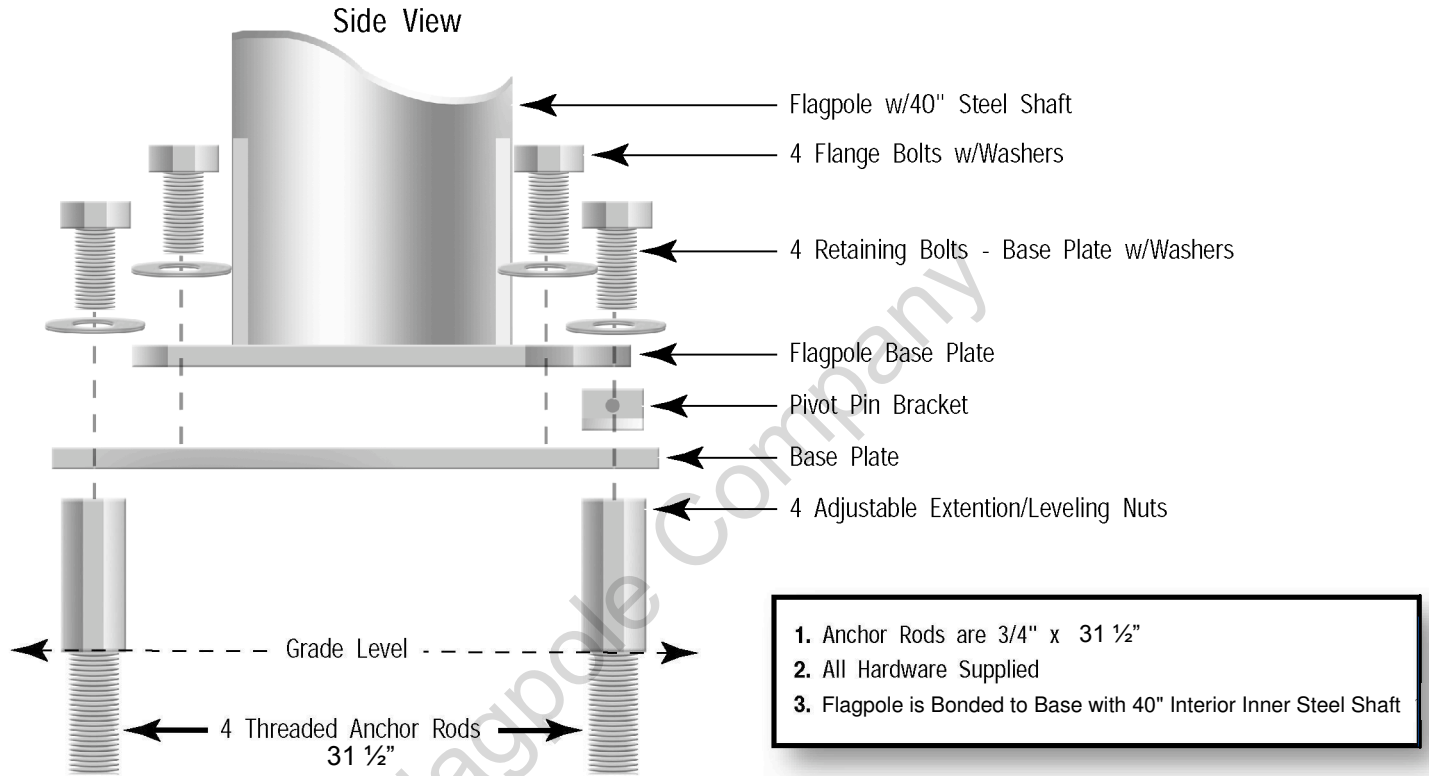
All flagpoles shipped with finial, revolving truck, halyard, hinge base kit, cleat, cleat screws, flag clips and instructions.



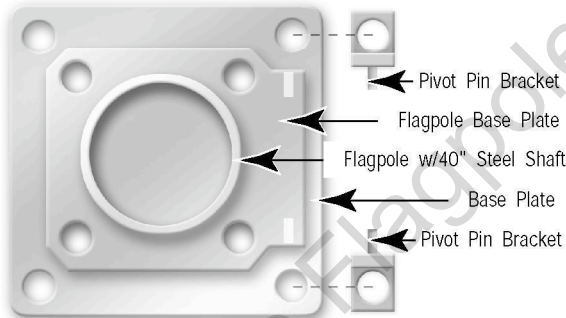
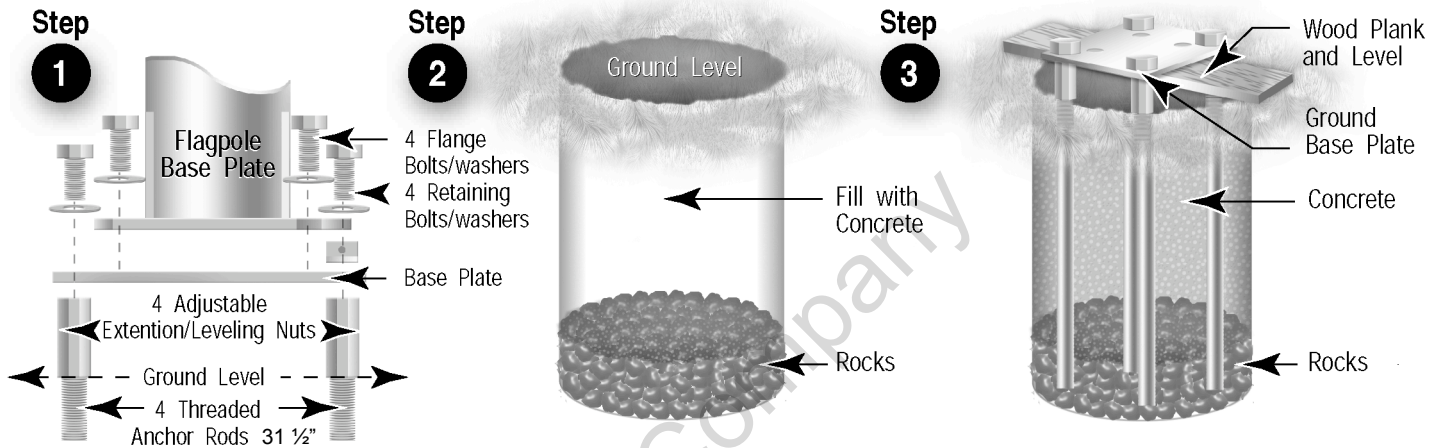
Base Plate



Hinge Base Schematic poles 50 & 60 feet



Installation Instructions for Hinge Base Flagpoles 50 & 60 feet



Installation Hole Depth (Table)

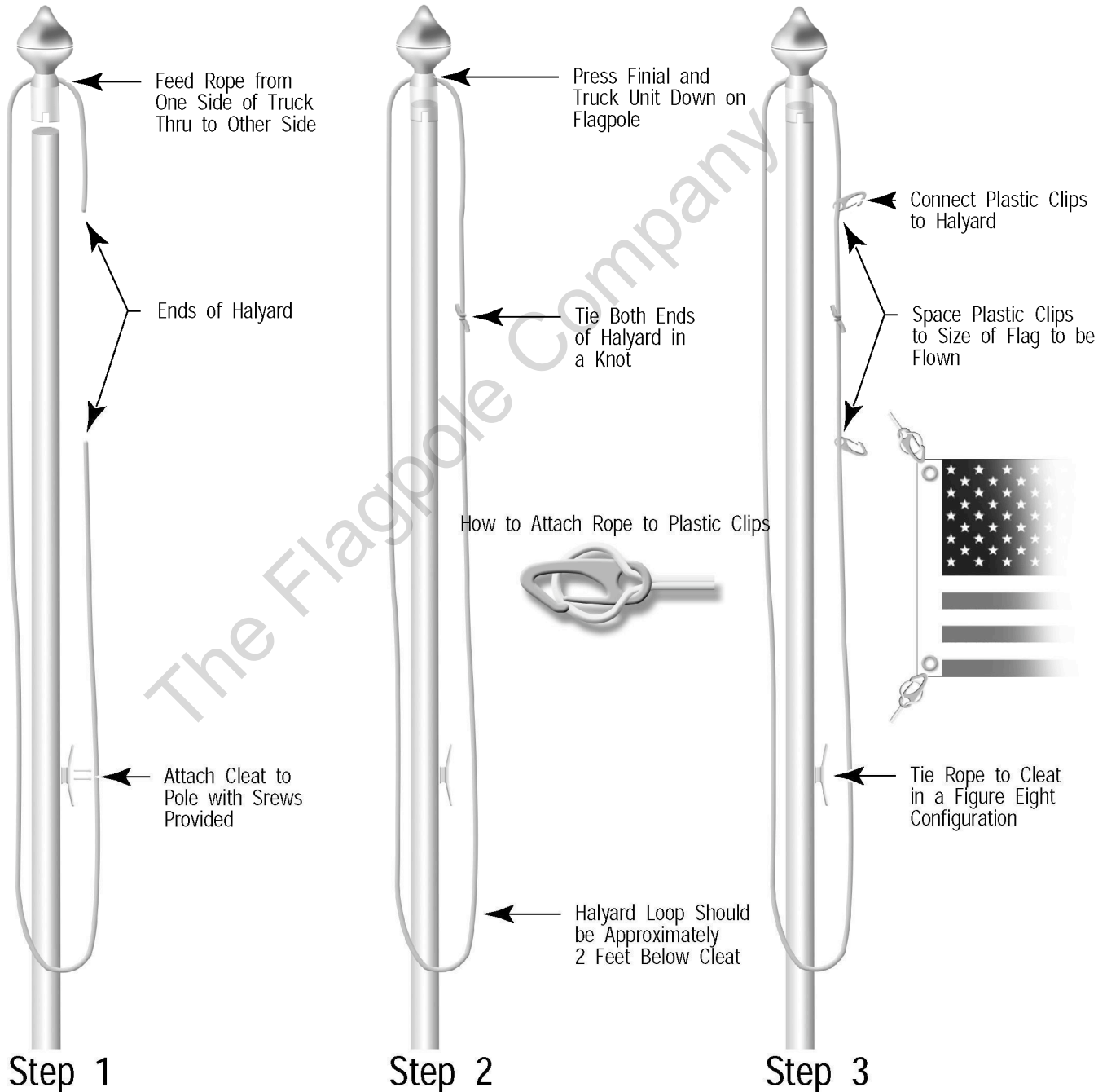
Pole Length (ft)	50	60
Min Diameter of the Hole (in)	30	30
Min Depth of the Hole (in)	60	72

- Remove items supplied in box along with the anchor rods. After removal, assemble the base plate to the anchor rods, fitting an extension nut to each anchor rod below the base plate. The retaining bolts, washers and pivot pin brackets are connected above and through base plate to extension nuts. The location of the hinge pin brackets will be determined by the direction in which the pole will be lowered. See sheet (AF-16) for a more detailed assembly.
- With the rods in the hole, locate the base plate horizontally at ground level with the help of a plank and level. Fill the hole with concrete up to the bottom of the extension nuts being sure that the extension/leveling nuts are free.
- Allow the concrete to cure. Place the flagpole in the required lowering position. Loosen one of the two pivot pin brackets on the base plate. Fit the flagpole pivot flange into the remaining pivot pin and retighten the other pin bracket and retaining bolt.
- Attach the finial onto the top of the flagpole and fit the cleat and halyard. Attach the weight ring in the case of an internal halyard flagpole. Using at least 3 people, raise the flagpole and secure in place with the aid of the flange bolts. Adjust for vertical by means of the extension nuts below the base plate. (Slightly loosen the retaining bolts first). Retighten all bolts. Finally retighten all bolts again after one month.

How to Rope External Halyard

IMPORTANT!

Before proceeding make sure Flash Collar is on first and slide collar down to the bottom of flagpole.



The Flagpole Company
PO Box 765
221 N. Main St.
Brooklyn, MI 49230
800.805.9728
www.theflagpolecompany.com



Assembly Instructions for Two Piece Flagpoles

50' and 60' Poles

Steps:

- 1** Assembling the Atlantic Fiberglass two piece flagpole is extremely simple.
- 2** Slide the upper portion of the flagpole over the sleeve protruding from the bottom section of the flagpole.
- 3** Align the mold mark on both sections of the flagpole. The mold mark is formed in the manufacturing process. Push the bottom and top sections together.
- 4** A rubber mallet may be used to move the sections together the last couple inches. Hit the top of the flagpole with the mallet until the two sections are touching and the inner sleeve is no longer visible.

