

THE FLAGPOLE COMPANY[®]

The Flagpole Professionals!



Model IC-306156

6" - 14 gauge spun aluminum ball
gold anodized.

Single sheave truck, cast aluminum
revolving, non-fouling, internal
halyard truck

One length #6 wire center halyard,
with 2 flag snaps and covers

One 2" x 3-1/2" vinyl covered
counterweight with eyelet

Beaded retaining ring

Access opening with cylinder lock

Aluminum flash collar

3000 PSI concrete

Hardwood wedges
(supplied by others)

Dry sand tightly tamped
after aligning pole

Foundation sleeve -16 ga
hot dip galvanized steel

Steel centering wedges

1/4" Steel base plate

1/4" Steel support plate
welded to grounding spike

Access height: 5'-0"

Foundation: 3'-6"

6"

12"

Exposed height: 30'-0"

Overall length: 33'-0"

3'-0"

6"

12"

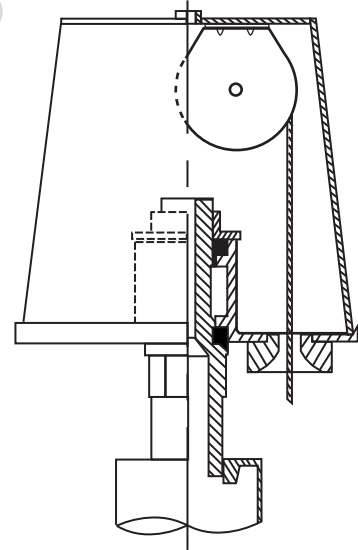
Tapered portion: 17'-3"

Overall length: 33'-0"

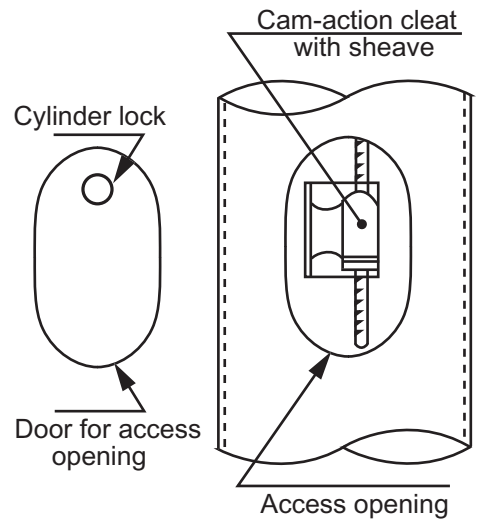
Straight portion: 15'-9"

6"

12"



Revolving non-fouling internal halyard truck, cast aluminum body, 26 stainless steel ball bearings, and 2-1/2" diameter plated steel sheave.



Project:	Ground set tapered aluminum flagpole: ALLOY: 6063T6	The Flagpole Company	Date:
Location:	Exposed height: 30'-0"	Overall height: 33'-0"	221 N. Main St.
Architect:	Ships in 1 Sections	Butt diameter: 6"	Brooklyn, MI 49230
Contractor:	Top diameter: 3-1/2"	Wall thickness: .156"	800.805.9728
Customer:	Finish: 100 grit polish		Job:

