

Single sheave truck, cast aluminum revolving, non-fouling, internal halyard truck

Model **K-8) *%**,

1/8" x 7x19 Mil-C-5424 Stainless steel aircraft cable

Standard flag arrangement: 4' x 6'

Neoprene coated 2" diameter steel counterweight

Nylon beaded retainer ring

Gearless, self locking direct drive winch with six tumbler cylinder lock

Aluminum flash collar

3000 PSI concrete

Hardwood wedges (supplied by others)

Dry sand tightly tamped after aligning pole

Foundation sleeve -16 ga hot dip galvanized steel

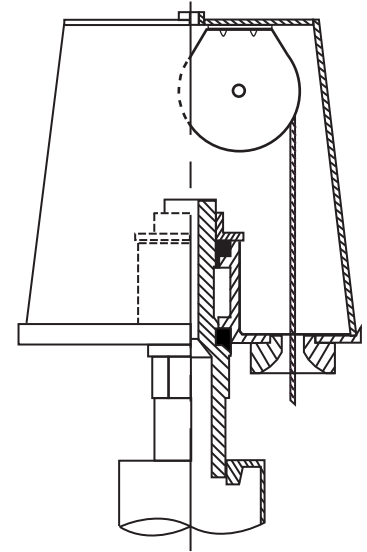
Steel centering wedges

1/4" Steel base plate

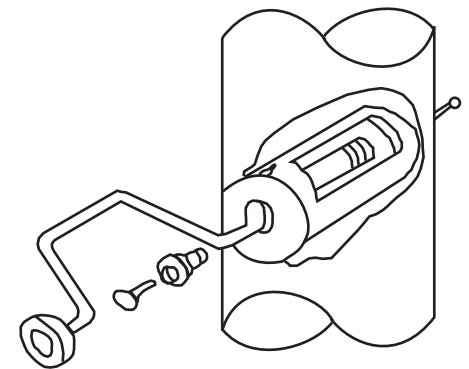
1/4" Steel support plate welded to grounding spike

THE FLAGPOLE COMPANY®

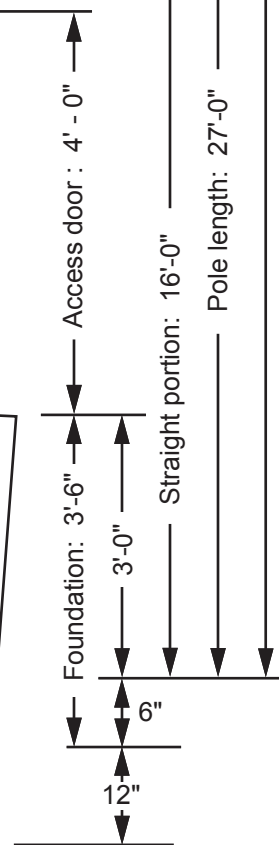
The Flagpole Professionals!



Revolving non-fouling internal halyard truck, cast aluminum body, 26 stainless steel ball bearings, and 2-1/2" diameter plated steel sheave.



Winch Detail



Ground set tapered aluminum flagpole: ALLOY: 6063T6	The Flagpole Company	Date:
Exposed height: 25'-0"	Overall height: 28'-0"	Revision:
Ship in 1 section	Butt diameter: 6"	Brooklyn, MI 49230
Top diameter: 3-1/2"	Wall thickness: .188"	800.805.9728
Finish: 100 grit polish		Job:

