



***motoalliance***

22000 Industrial Blvd, Rogers, MN 55374 / 1-866-527-7637  
www.motoalliance.com

## **Thermostat Bypass Kit**

### **Type 104**

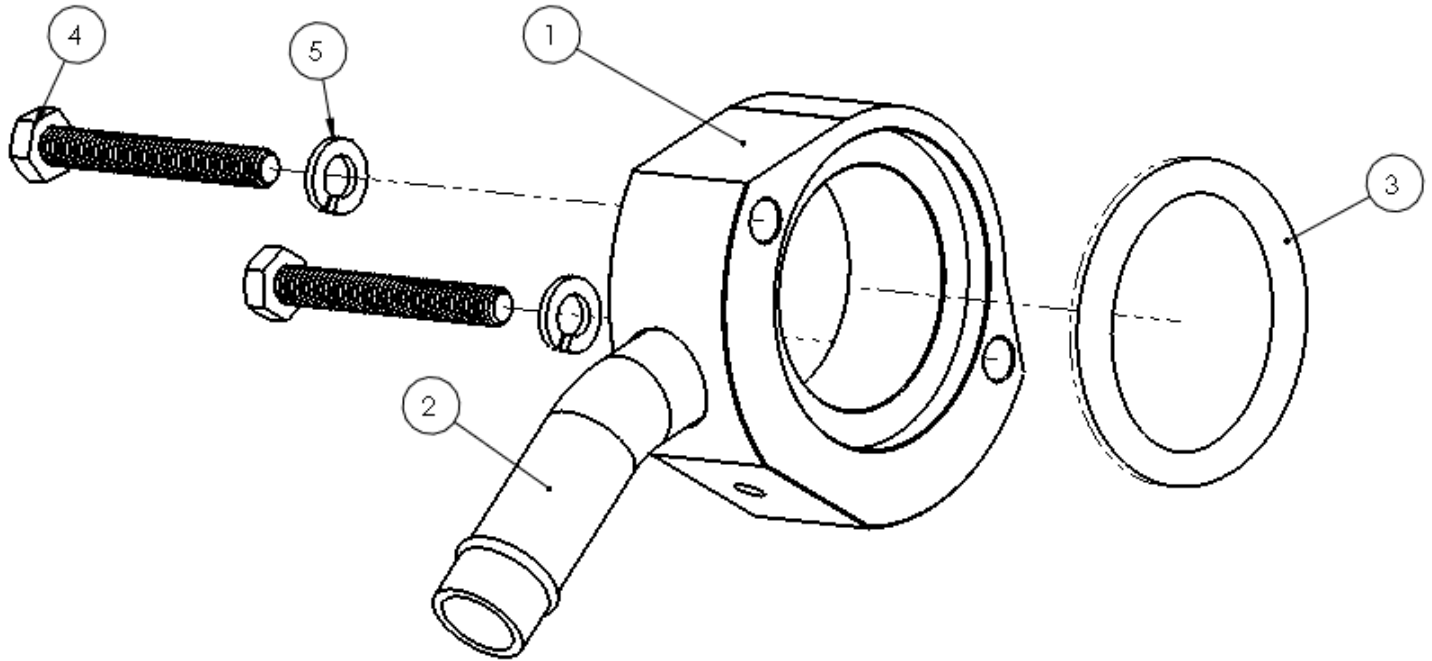
Thank you for purchasing our Firestorm Thermostat Bypass Valve. Once your vehicle is warmed up, the Thermostat Bypass Valve will cause your heater system to provide consistent heat that is independent of the thermostat position.

**Note: When working on your vehicle's coolant system, always ensure that the engine is cold. Neglecting to do this may result in significant burns.**

**Firestorm Heater Bypass Kit  
HT-BP104**

Please verify that all hardware and parts are included in your package.

**Kit Contents:**



**Assembly View**

Item	Description	Qty
1	Thermostat Bypass Housing Type 203	1
2	5/8" Outlet	1
3	2" O-Ring R1000-326 MarcoRubber.com	1
4	M6 x 45mm SS HH Bolt (93635A232)	2
5	M6 SS Lock Washer	2
6	5/8" Coolant Hose (Not shown)	6 feet
7	#10 SS Hose Clamps (Not Shown)	1

**INSTALLATION:**

- 1) If applicable, tilt the bed of the vehicle to gain access to the engine.
- 2) Locate the 570 Thermostat as shown below.

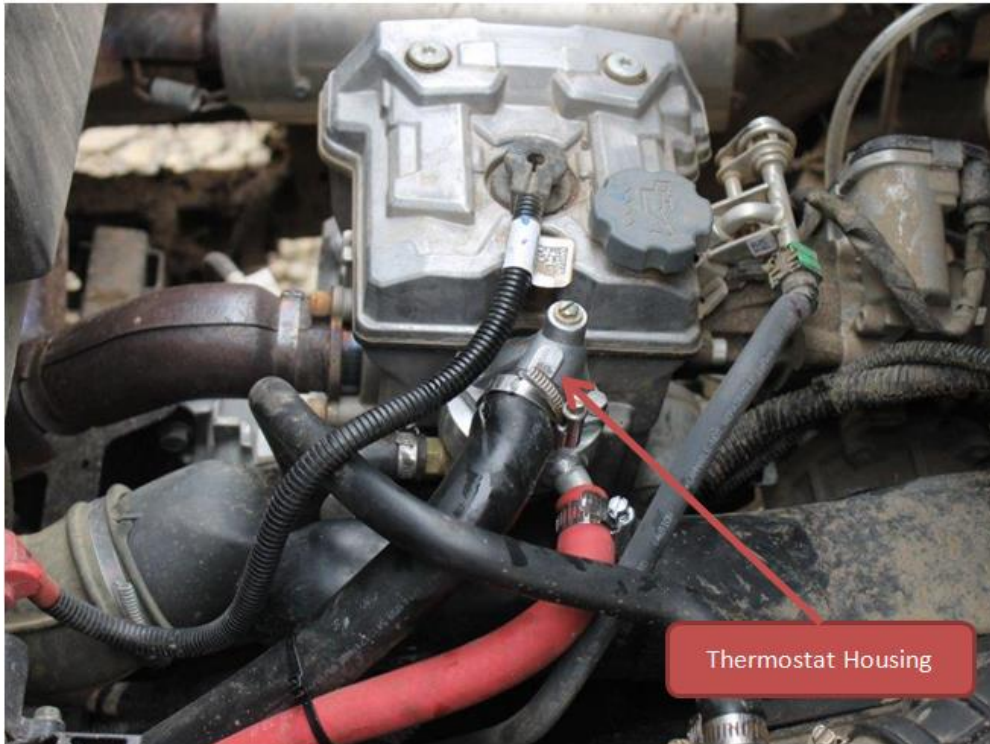


Figure 1

- 3) Remove the two bolts holding the Thermostat Housing to the engine block and set them aside.  
**Note: Make sure the vehicles engine is COLD and always wear safety glasses. Do not proceed if the engine is hot or warm.**

- 4) Position the Thermostat Bypass valve so that 2" O-ring sits on top of the engine block and in the orientation shown below.

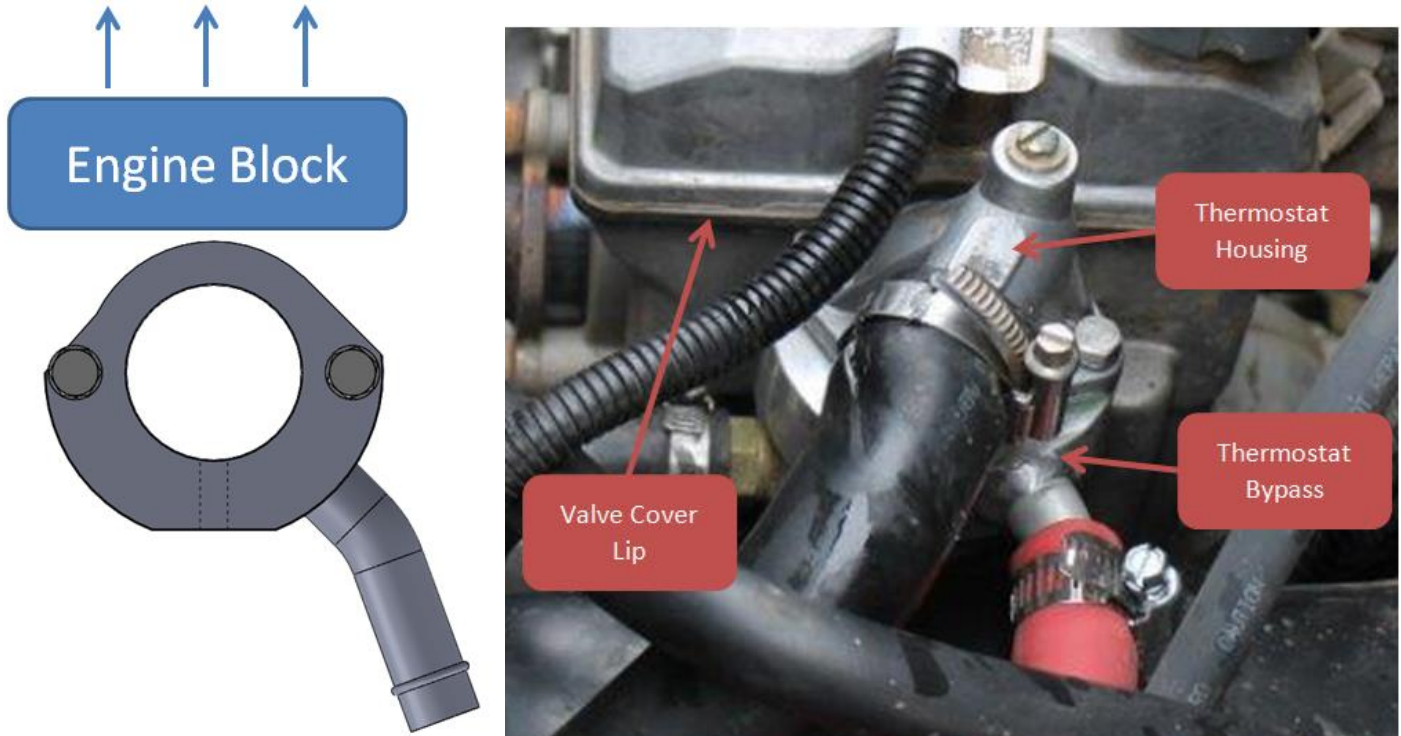


Figure 2

- 5) Position the Thermostat inside the Thermostat Housing in the same orientation that it was removed. Loosely position the Thermostat and Thermostat Housing over the Thermostat Bypass so that one of the mounting holes align.
- 6) Insert one of the two stainless steel M6 bolts and lock washers and hand tighten a couple threads.
- 7) Compress the 2" O-ring by pressing down on the Thermostat Housing. Once the Thermostat Housing is underneath the Valve Cover Lip, rotate the Thermostat Housing until the second mounting hole aligns. Insert the remaining M6 bolt and lock washer. Tighten both bolts by hand. Use a wrench to tighten all the way, do not exceed 8 ft-lbs of torque.
- 8) Attach the included 5/8" Heater Hose using the stainless steel hose clamp and route the hose to the heater as shown in Figure 3. Note: The 5/8" Heater Hose is shown in RED in the image but is black when shipped. Attach the 5/8" Heater Hose to the inlet hose of the heater unit.





Figure 3

- 9) In some cases it may be necessary to grind a small amount of material off of the dump bed just above the Thermostat housing to avoid hitting the 1" Coolant Lines.