

***Thank you for choosing High Lifter!***

**MCRRA-KMPRO**

**Max Clearance Kawasaki Mule Pro Rear Raked Control Arm Kit**

***Lift Kits • Tires • Suspension • Snorkels***

***HIGHLIFTER***

***Axles • Clutch Kits • Portals • Rad Kits***

**Contact Us**

**Mon-Fri 8am - 5pm CST**

**highlifter.com**

**sales@highlifter.com**

**800-699-0947**



## **MCRRA-KMPRO**

### **Max Clearance Kawasaki Mule Pro Rear Raked Control Arm Kit**

#### *Read before Installation*

This product is designed for use on ATVs and/or RUVs to increase ground clearance and fender clearance. Purchasers should be aware that use of this product may increase the frequency of required maintenance, part wear, and will raise the center of gravity on your ATV and/or RUV, increasing risk of roll-over, injury and death on all types of terrain. It is your responsibility to always inform other operators and passengers of this vehicle about the added risks.

High Lifter Products, products are designed to best fit users ATV/RUV under stock conditions. Adding, modifying, or fabricating any OEM or aftermarket parts will void warranty. High Lifter Products, products could interfere with other aftermarket accessories. If the user has aftermarket products on machine, contact High Lifter Products to verify that they will work together. Adding aftermarket suspension components and/or more aggressive tires can cause breakage of other OEM driveline components such as differentials, axles or drive shafts.

We recommend that wider tires and/or wheel spacers be used to achieve a wider stance and to improve stability of the ATV and/or RUV. Riders should be advised that the handling characteristics of a taller ATV and/or RUV are different and require extra care when riding, particularly on side hills or off-camber situations. If you further raise the center of gravity by adding taller tires, heavy loads to racks or seats, or by any other means, the ATV and/or RUV must be operated with even more care, at slower speeds and on relatively flat ground. All turns should be done at a slow speed, even on level ground.

Operation of an ATV and/or RUV with or without modified suspension components, while or shortly after consuming alcohol or drugs, subjects the rider to the risk of serious bodily harm or possible death. This risk is compounded if the rider does not wear an approved helmet and other safety gear. High Lifter urges that all approved safety gear be worn when riding an ATV and/or RUV as a driver or passenger.

By purchasing and installing High Lifter Products, products, user agrees that should damages occur, High Lifter Products will not be held responsible for loss of time, use, labor fees, replacement parts, or freight charges. High Lifter Products will not be held responsible for any direct, indirect, incidental, special, or consequential damages that result from any product purchased from High Lifter Products. The total liability of seller to user for all damages, losses, and causes of action, shall not exceed the total purchase price paid for the product that gives rise to the claim.

If this product is not what you expected, or is not consistent with your intended use, you should return the product immediately to the seller, before installation, for a refund of the purchase price; less any fees. After installation, product is warranted for 90 days for defects in workmanship and materials. High Lifter Products will warranty only parts provided by High Lifter Products. Any damage or problems with OEM housings, bearings, seals, or other manufacturer's products will not be covered by High Lifter Products. Parts and products will not be warranted if item was not installed properly, misused, or modified.

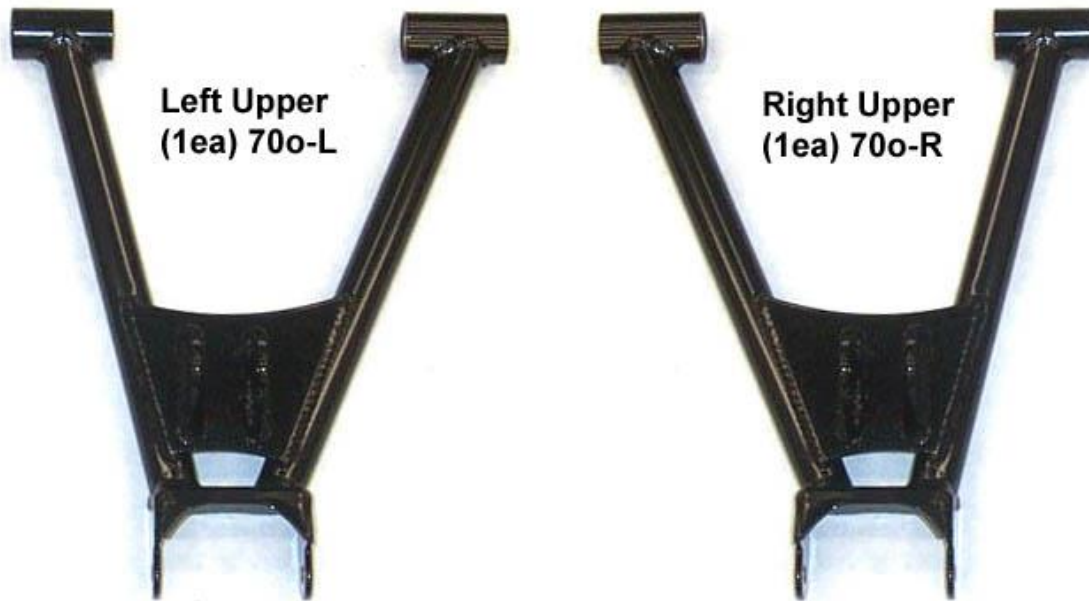
#### Dealers and other Installers

You are responsible for informing your customer and end user of the information contained above and the increased potential hazards of operating an ATV and/or RUV equipped with modified suspension components. If you install any suspension modifying components, it is your responsibility to also install the warning label prominently in view of the driver and in prominent view of the driver and passenger on RUVs and multi-passenger ATVs. They should also be instructed to notify anyone operating the vehicle, as well as any passengers, that said vehicle is modified.

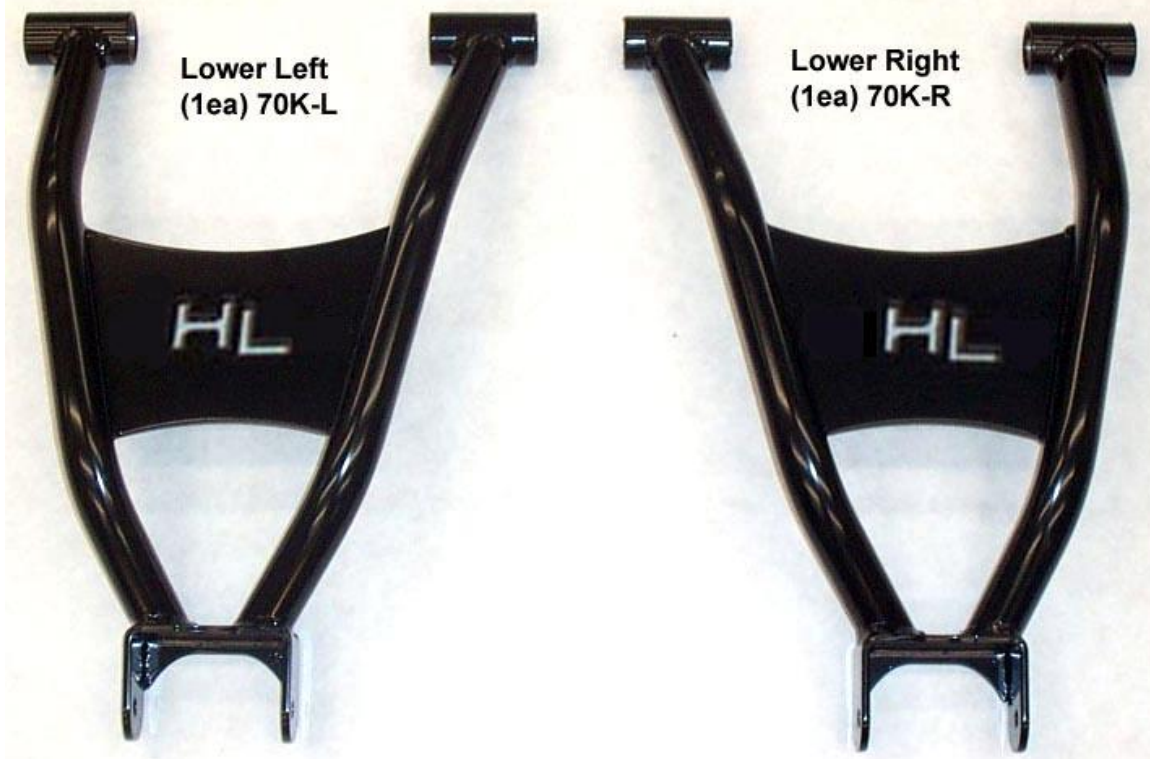
As discussed above, it is critically important that they be instructed in the need for slower speed operation, regardless of terrain, after this lift kit is installed.

# Parts Diagram

## Rear Upper Control Arms



## Rear Lower Control Arms



## Zip Ties (4ea) T11RB





## Installation Instructions

- 1) Place jack under the rear center and lift until the weight is off the suspension. Be careful to secure properly so that it is stable on the jack.
- 2) Remove the rear wheels.
- 3) Remove the rear upper and lower control arms from both sides. Disconnect from frame and rear hubs.



- 4) Remove the stock bushing from the factory arms and insert them into the new rear control arms. **You may need a press to remove the factory bushings from the arms.**

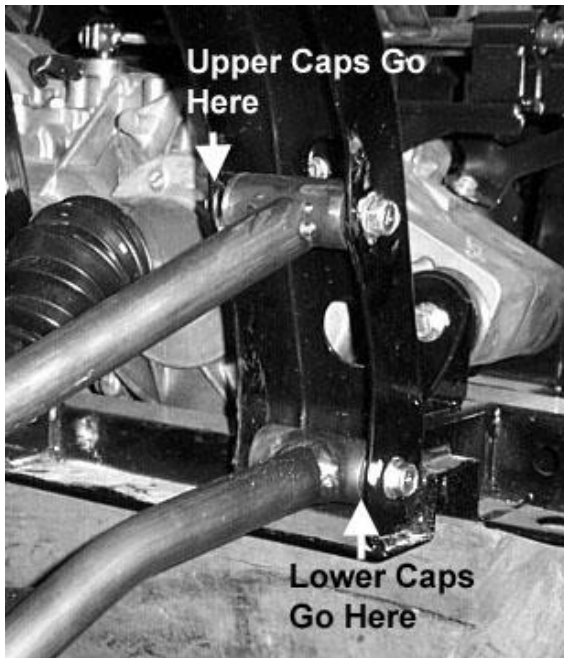


Note: Placing some grease on the bushing. This makes the installation easier.

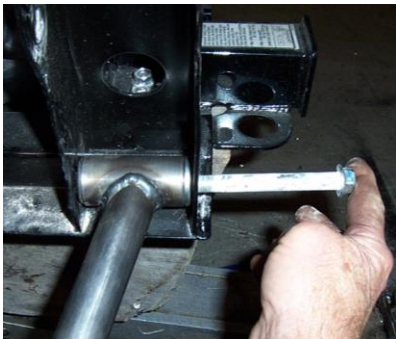




- 5) Installation NOTE very important! The bushing caps on the lower only go the ends of the collars facing the rear and bushing caps for the uppers go on the ends of the collars facing the front. See illustration

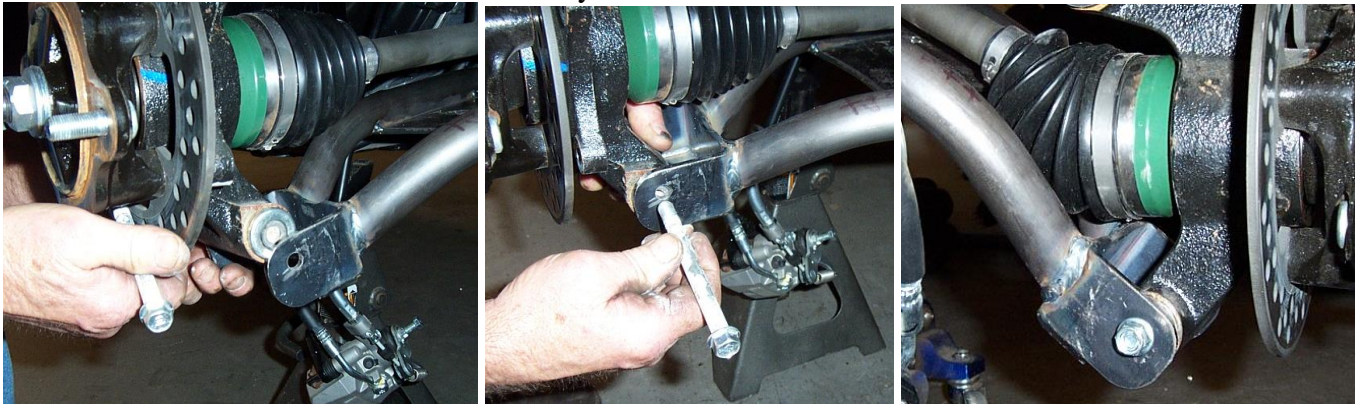


- 6) When the bushings are in place connect the new control arms to the frame using the stock hard hardware. Start with the lower arm first then do the upper arm at the frame then at the knuckle assembly. Make sure to use the bushing caps that were on the factory control arms. Secure them in place with the factory washer and nut.





7) Next connect the arm to the knuckle assembly.

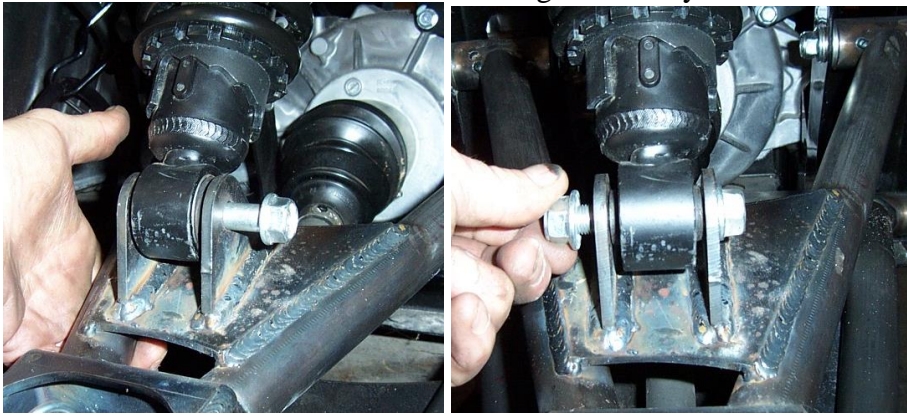


8) Repeat the steps for the upper control arms. Make sure to secure the arms in place with the factory hardware.

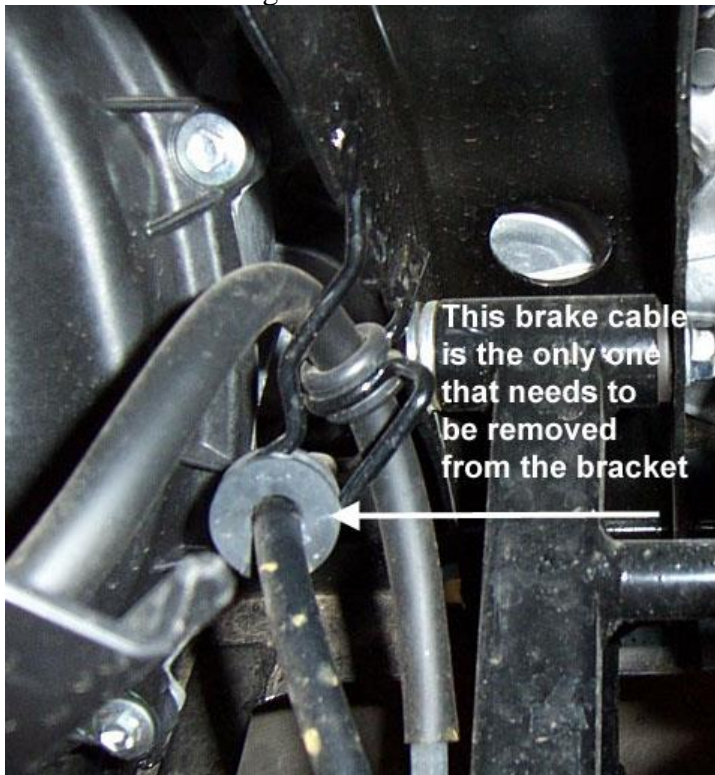




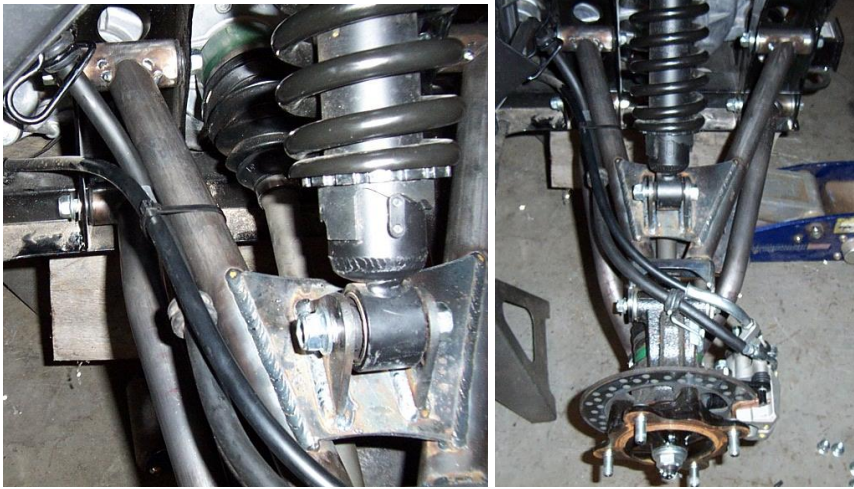
- 9) Connect the shock to the control arm using the factory hardware.



- 10) Because the new rear control arms are racked back you will need to reroute one of the brake cables. It is connected to the frame using a wire bracket. You have two options at this point, easy or hard. The easy option is to cut the wire bracket and pop the brake cable out of the bracket. The hard option is to disconnect the brake cable from the caliper, pull it through the wire bracket, and then reattach it to the caliper. To disconnect the brake cable from the caliper is difficult and to reattach is more difficult. Either way you need to get the cable out of the bracket so that you have enough slack to reattach it to the control arms without binding the cable. We recommend trimming the bracket to make it easier.



11) Connect the brake cables to the control arms using the zit ties provided in the kit.



12) Repeat steps for opposite side.

13) Once you have installed the control arms, place the wheels back on the UTV. Torque all lugs to factory specifications and lower the jack.





### **High Lifter Lifetime Warranty**

From the beginning, High Lifter has engineered and manufactured some of the toughest, most durable products on the market. That's why this product comes with a Lifetime Warranty. It's our promise that High Lifter will never let you down.

- The **Lifetime Warranty** covers products sold to the original purchaser only and is not transferable. The term of the warranty is for the lifetime of the vehicle in question.
- Normal wear and tear items and finishes, such as, but not limited to: Heim joints, tie rod ends, ball joints, bearings, seals, bushings, bushing sleeves, zinc plating , powder coating, or chipping and discoloration of any finish is not covered.
- High Lifter will ship the replacement product after the returned product has been inspected by High Lifter staff.
- The warranty shall not include claims for damages, installation time or labor charges, economic losses, inconvenience, transportation, towing, down time, direct or indirect or consequential damages or delay resulting from any defect.
- The warranty does not apply to products that have been improperly applied or improperly installed.

### **Making a warranty claim**

1. All claims must be accompanied by the part and the original sales receipt or other acceptable proof of purchase from the original owner.
2. All warranties must be accompanied with a Return Merchandise Authorization (RMA) number. (Contact High Lifter at 318-524-2270 or 800-699-0947 for an RMA number)
3. When shipping the damaged product:
  - a. Write the RMA number on the outside of the box.
  - b. Also include the RMA number, proof of purchase and any notes inside the box.
  - c. Please keep your tracking number and shipment information.
4. The customer is responsible for shipping the product to High Lifter--return shipping within the lower 48 states will be paid by High Lifter products. With all warranty claims, only standard shipping services apply.
5. High Lifter will process your order within 24 business hours of receiving the returned item.
6. **Ship to:** High Lifter Products, 780 Professional Drive North, Shreveport, Louisiana 71105