



TRAILARMOR.COM
839 HWY 2 CORINTH, MS 38834
(662) 462-4222

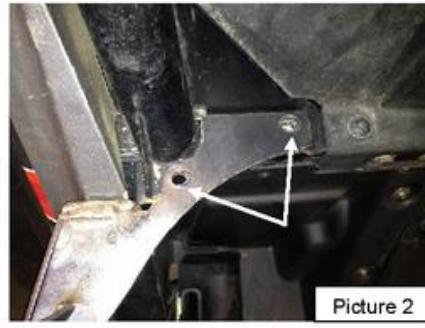
Installation Instructions

Trail Armor RZR 800, RZR 800 S, RZR XP 900, RZR 570, RZR 800 XC GenX and Slimline Doors TA001BLKGX-RZR, TA001BLK-RZR

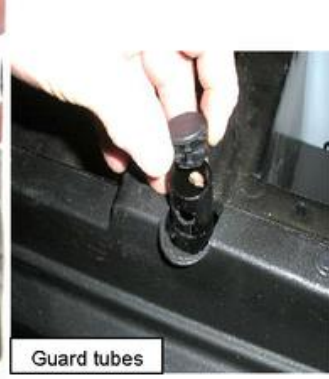
Warnings and Product Liability Disclaimer

This product is intended to be used as a cosmetic accessory under normal equipment operation and should not be depended upon or used as a safety device. Manufacturer assumes no liability for personal injury or equipment damage as the result of use or installation of this accessory. User assumes all risk. User should carefully read all instructions prior to installation. All Trail Armor products are designed, engineered, and fit to new vehicles and their specifications. Damage, modifications, and extreme wear may cause and require modifications to the product and/or your vehicle to insure proper fitment.

- A) Remove seats and side nets. Remove the side guard tubes that bolt beside the seats and to the upper rear of the roll cage. Discard. See Picture 1.



- B) Remove the two bolts securing the lower rear leg of the roll cage to the top cross member of the frame. See Picture 2.
- C) Remove the seat belt reel assembly from the lower frame side.
- Each model is slightly different in accessing the seat belt reel fasteners. To ease access to these fasteners, you can remove the lower fender flair bolts and gently push it out of the way or remove the lower rocker panel bolts and come up from underneath.
- D) Once the seat belt reel is removed, place the door hanger bracket on top of the roll cage. Secure loosely with the removed OEM bolts and nuts (Picture 2). Insert the seat belt reel stud through the lower tab in the bracket. Be careful to maintain proper alignment of the reel as you tighten. Also ensure proper twist in the seat belts. See Picture 3.

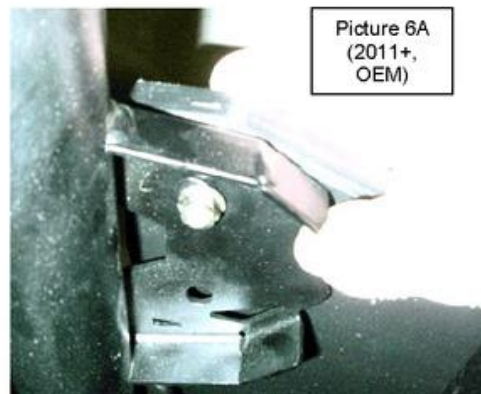




TRAILARMOR.COM
839 HWY 2 CORINTH, MS 38834
(662) 462-4222

Installation Instructions

- E) With the door hanger bracket in place (See Picture 4), install the rear plastic filler panel by fitting it against the body plastic and the hanger bracket, aligning the holes of the filler panel with the hanger bracket. Insert four supplied 1/4-20 x 1 1/8 six-lobe (T-27) steel truss machine screws through the plastic and through the hanger bracket. **Do not secure with nylock nuts at this time.** For 2011+ RZR, RZRS, and all XP 900 models, insert supplied tubing plugs on the open tubing where the side guard tubes were removed. Ensure that seat belt reel is securely tightened and tighten the two loose roll cage bolts securing the hanger bracket. See Picture 2.
- F) Locate the supplied hinges. The hinges have an offset bend. See Picture 5. Place the longer leg of the hinge to the inside of the bracket over the installed screws (see Step E) and secure with the supplied 1/4-20 nylock nuts. See Picture 6. Tighten securely. Flex the filler panel over toward either the OEM side guard tube bracket (11+) or the Trail Armor-provided support bracket. **NOTE:** Early models (08/10) will require an additional supplied upper bracket that must be installed prior to installing the upper screw in the hole. For early model installation, see Picture 7. Secure the upper rear filler panel by inserting one 1/4-20 x 1 1/8 six-lobe (T-27) steel truss machine screw into the open upper hole of the filler panel and through the bracket. Secure with a nylock nut. See Picture 6A.
- G) Using the four supplied 1/4-20 X 1 six lobe (T-27) steel truss machine screws, install the door panel to the hinges and secure with nylock nuts. If you are installing Trail Armor graphics kit, Trail Armor circular logos on the hanger panels go on the inside of the vehicle.
Repeat Steps A – G for other side.



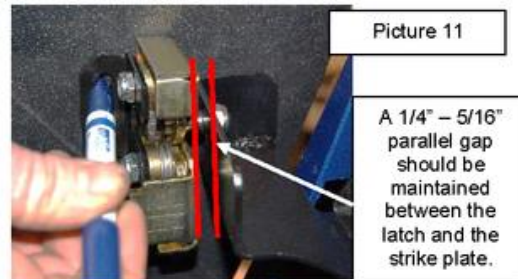
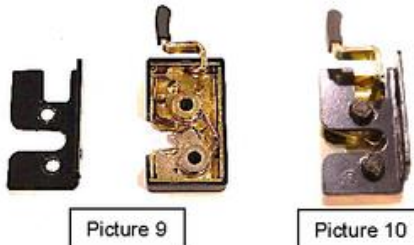


TRAILARMOR.COM
839 HWY 2 CORINTH, MS 38834
(662) 462-4222

Installation Instructions



- H) Remove the front roll cage bolts and discard – keep nylock nuts. See Picture 8. Install the front striker plates to the outer side of the roll cage using the supplied $3/8 - 16 \times 2$ (for 08-13 models) hex head bolts and the removed OEM nylock nuts. See Picture 9. Tighten securely **maintaining parallel alignment on the front edge of the brackets and roll cage**. Install the $3/8 \times 3/4$ shoulder bolt and secure with a $5/16 - 18$ nylock nut on the pre-drilled hole on the striker plate to serve as a latch catch. See Picture 10. **Please note that on the 2014 year models, there is a slight difference in the roll cage (flattened joint). Thus you will use a $3/8 - 16 \times 1 1/2$ " to install the striker plate.*
- I) Before installing latch onto the door, push door to closed position to check alignment between the door panel and body panel. If needed, adjust the hanger bracket and the hinges and roll cage so that there is an equal amount of clearance between the front of the door panel and the body panel. Once they are aligned, tighten all installed hardware securely. Repeat Steps H - I other side.
- J) Locate the passenger door handle latch and handle mount. See Picture 9. To start the latch installation, carefully remove plastic handle cover. Insert two $5/16 - 18 \times 1 1/4$ " flathead screws through the front of latch. Place door handle mount over screw ends, and secure using the two supplied $5/16 - 18$ thin nylock nuts. Tighten securely. See Picture 10.



- K) **For Slimline Doors:** Clip the rotary latch over the striker bolt. Center the latch's rotary clip in the middle of the striker, close the debris shield against the latch handle assembly and mark the mounting holes on the debris shield. See Picture 11. **If your latch seems to be high or not even with the other side on the door interior, adjust alignment of striker plate to roll cage (step H) before drilling. This is an adjustment point.** Use a $1/4$ " drill bit and drill the holes and attach the latch using supplied $1/4 - 20 \times 1$ " Torx Truss head screws and Nylock nuts. Check fitment while closed. Install rotary latch cover by simply bumping it on.

For GenX Doors: Place handle latch assembly against the slotted holes of the door panel. Insert two supplied $1/4 - 20 \times 1$ " six-lobe (T-27) steel truss machine screws through the two slotted holes and into the latch mount. Secure with two supplied $1/4 - 20$ nylock nuts. Loosely start nylock nuts. Once latch is installed onto door panel, close door panel until the rotary claw latches over the strike bolt. **The slotted holes will allow for adjustment so that the face of the rotary latch can be adjusted to the angle of**



TRAILARMOR.COM
839 HWY 2 CORINTH, MS 38834
(662) 462-4222

Installation Instructions

the striker bolt on the striker plate. Allow enough room for the plastic rotary latch cover to be installed after latch handle is fully installed. See Picture 12. Once the latch is properly adjusted, tighten bolts to secure latch. **Adjust striker plate if needed.** Repeat other side. Install rotary latch covers by simply bumping them on. Ensure all hardware is tightened securely and repeat Steps J - K on other side. Enjoy!

Picture 12

