



TRAILARMOR.COM
839 HWY 2 CORINTH, MS 38834
(662) 233-5700

Installation Instructions

Trail Armor 2021 Can Am Maverick Trail Full Skids TA012FULLSKID-CAMTRL-21

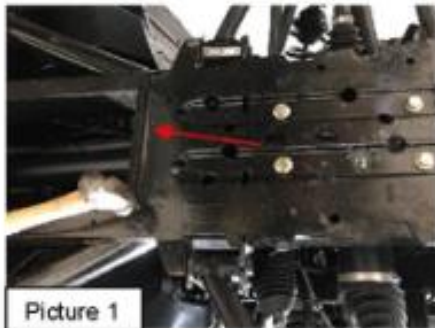
Warnings and Product Liability Disclaimer

This product is intended to be used as a cosmetic accessory under normal equipment operation and should not be depended upon or used as a safety device. Manufacturer assumes no liability for personal injury or equipment damage as the result of use or installation of this accessory. User assumes all risk. User should carefully read all instructions prior to installation. All Trail Armor products are designed, engineered, and fit to new vehicles and their specifications. Damage, modifications, and extreme wear may cause and require modifications to the product and/or your vehicle to insure proper fitment.



Instructions

- A. Remove OEM hardware and skids by either drilling out the rivets (3/16" or smaller) or using a cold chisel. **DO NOT USE TOO LARGE OF A BIT!!** A small pin punch can be used to drive the remaining pieces of the rivets out. There will be a few bolts and push pins which will need to be removed also.
- B. Once the factory skids are removed, locate the metal factory plate which covers the front differential. To the rear of the plate, the bend that held the front of the factory skid plate will need to be flattened with a hammer. See Picture 1.



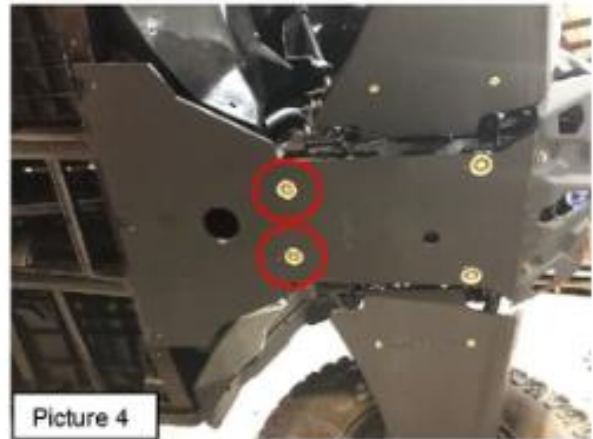
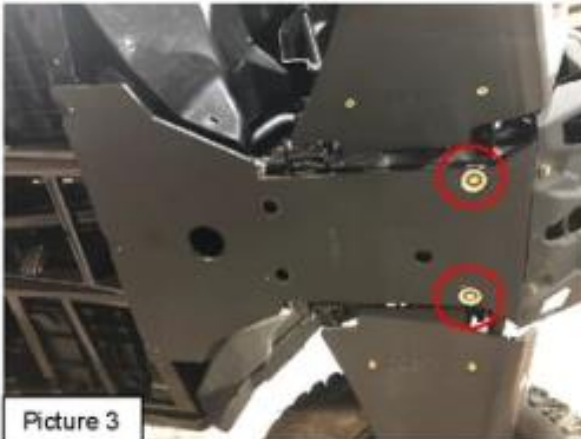
- C. Locate the spacers from the skid set. Also, locate two supplied #14 x 2" TEK self-drilling screws. **NOTE-** there is a short end and long end to the spacers. The short end will go towards the rear of the vehicle. See Picture 2. Insert one 2" self-drilling screw through each of the spacers into the frame. There should be a rivet hole to locate the screws.



TRAILARMOR.COM
839 HWY 2 CORINTH, MS 38834
(662) 233-5700

Installation Instructions

- D. Locate Panel A from the skid set. Also, locate two supplied $\frac{1}{4}$ -20 x 3" bolts, two supplied $\frac{1}{4}$ -20 nylock nuts, and two supplied bowl washers. Holding Panel A at the front of the vehicle, insert one 3" bolt and bowl washer through each of the front holes of the panel. Secure with the $\frac{1}{4}$ -20 nylock nuts. See Picture 3. Loosely tighten.



- E. Locate two supplied $\frac{1}{4}$ -20 x 1" serrated flange bolts, two supplied bowl washers, and two supplied $\frac{1}{4}$ -20 t-nuts. Insert one bolt and bowl washer through the panel and frame. Secure with the $\frac{1}{4}$ -20 t-nuts. See Picture 4. The location of the t-nuts can be accessed behind the a-arms inside the frame rails.
- F. Locate Panel C from the skid set. Also, locate two supplied #14 x 1-1/4" TEK self-drilling screws and two supplied bowl washers. Holding Panel C into position at the rear of the vehicle, insert the 1-1/4" TEK SCREWS into the two holes as shown in Picture 5. Loosely tighten.



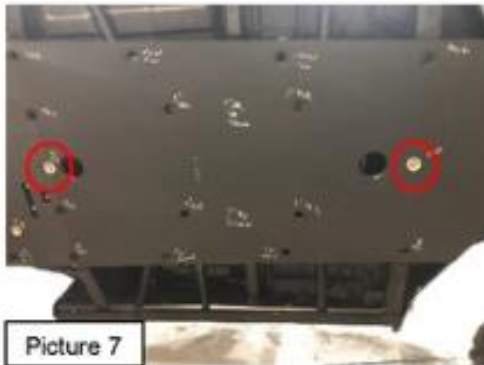
- G. Locate one supplied $\frac{1}{4}$ -20 x 1" serrated flange bolt, one supplied bowl washer, and one supplied $\frac{1}{4}$ -20 t-nut. Insert the 1" bolt and washer into the rear hole of Panel C and secure with the $\frac{1}{4}$ -20 t-nut. The t-nut can be accessed from the rear of the vehicle. See Picture 6. Loosely tighten.



TRAILARMOR.COM
839 HWY 2 CORINTH, MS 38834
(662) 233-5700

Installation Instructions

- H. Locate Panel B from the skid set. Also, locate two supplied #14 x 1-1/4" TEK self-drilling screws and two supplied bowl washers. Holding Panel B into position at the center of the vehicle, insert one 1-1/4" TEK screw and bowl washer into the front center hole of the panel and the other into the rear center hole. See Picture 7. We use a small ratchet strap from front to rear to align the center panels. Align all panel and tighten all fasteners installed up to this point.



- I. Locate the two supplied metal slider brackets from the skid set. Also, locate fourteen supplied 1/4-20 u-nuts. Snap seven u-nuts onto each bracket as shown in Picture 8.
- J. Locate the (RT) side bracket, two supplied 1/4-20 x 1" serrated flange bolts, and two supplied bowl washers. Slide the bracket behind the center panels with the tab towards the front. Insert two 1/4-20 x 1" bolts and washers into the outer holes Panel B (shown in RED). Locate one supplied 1/4-20 x 3/4" thread-cutting screw and one supplied bowl washer. Insert these into the rear outer hole of Panel C (shown in GREEN). See Picture 9.



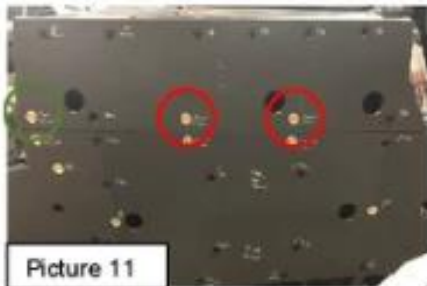
- K. Locate one supplied 1/4-20 x 1" serrated flange bolt. Insert the 1" bolt through the front fender well into the u-nut on the tab. See Picture 10.



TRAILARMOR.COM
839 HWY 2 CORINTH, MS 38834
(662) 233-5700

Installation Instructions

- L. Locate Panel D from the skid set. Also, locate two supplied $\frac{1}{4}$ -20 x 1" serrated flange bolts and two supplied bowl washers. Holding Panel D into position, insert one 1" bolt and washer into each of the inside holes of the panel (shown in **RED**). See Picture 11. Locate one supplied $\frac{1}{4}$ -20 x $\frac{3}{4}$ " thread-cutting screw and one supplied bowl washer. Insert these in the rear hole of Panel C (shown in **GREEN**).



- M. Locate two supplied M6-1.0 x 30mm. bolts and two supplied bowl washers. Insert these into the two rear outer holes of Panel D. See Picture 12. Repeat Steps J-M for the opposite side.
- N. Locate the four holes at the center of Panel B. The spacers installed at the beginning are behind these four holes. Make sure the spacers are centered and can be seen through all the holes. Holding a bowl washer in each hole, drill a $\frac{3}{16}$ " hole in the center of each bowl washer through the spacers. Locate four supplied #14 x 2" TEK self-drilling screws and four bowl washers. Insert one 2" TEK screw and washer into each of the holes into the frame. See Pictures 13A, 13B, and 13C.





TRAILARMOR.COM
839 HWY 2 CORINTH, MS 38834
(662) 233-5700

Installation Instructions

- O. ALMOST DONE!! Hang in there! There should be a total of twenty holes left open. Locate twenty supplied #14 x 1-1/4" TEK self-drilling screws and twenty supplied bowl washers. Insert one screw and bowl washer into each of the remaining holes. See Picture 14 for locations and final install.



Picture 14