



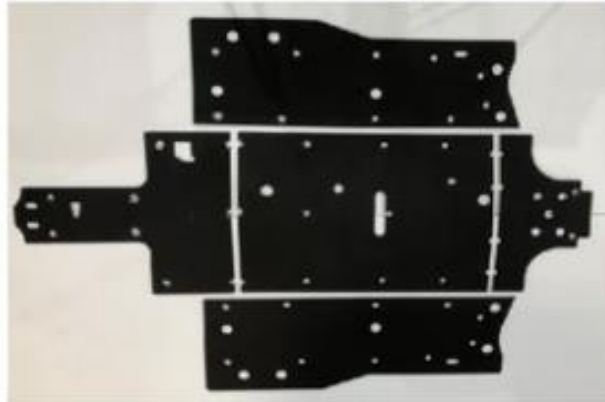
TRAILARMOR.COM
839 HWY 2 CORINTH, MS 38834
(662) 233-5700

Installation Instructions

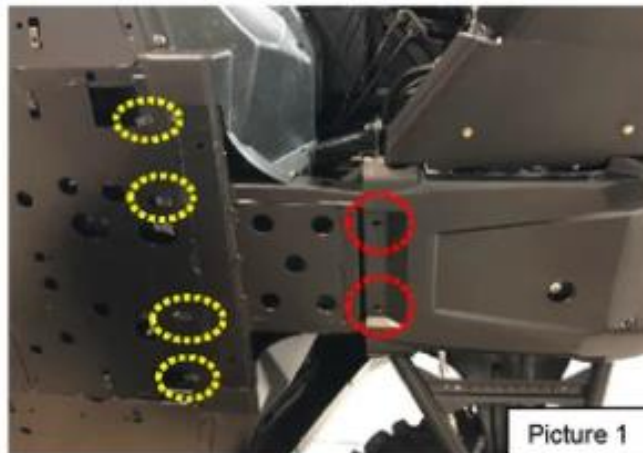
Installation Instructions for Trail Armor Yamaha Wolverine RMAX2 Full Skids TA012FULLSKID-YW-RMAX2

Warnings and Product Liability Disclaimer

This product is intended to be used as a cosmetic accessory under normal equipment operation and should not be depended upon or used as a safety device. Manufacturer assumes no liability for personal injury or equipment damage as the result of use or installation of this accessory. User assumes all risk. User should carefully read all instructions prior to installation.

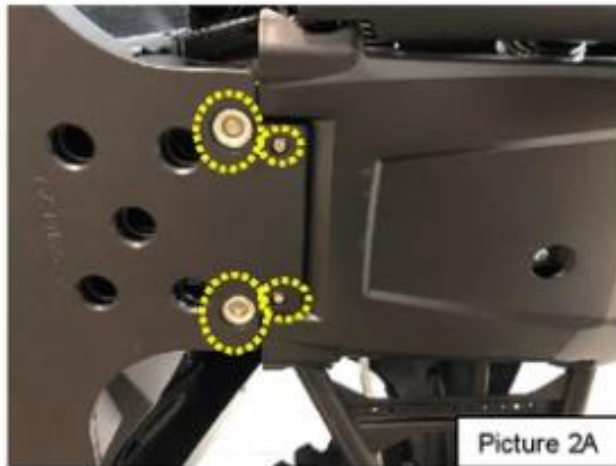


- A. To ease installation, gently tip vehicle onto its side and support securely with a safety stand. Locate the factory screws at the rear of the front factory bash plate (shown in **RED**). Remove and discard. See Picture 1.



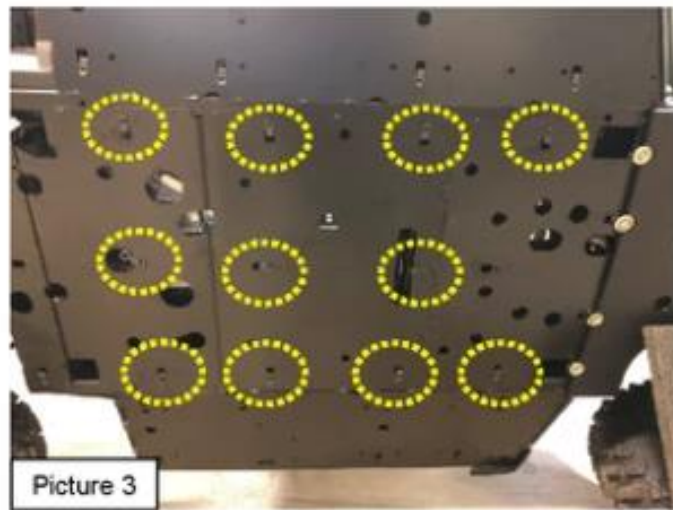
- B. Locate four supplied 1/4-20 u-nuts. Insert these as shown in Picture 1 (shown in **YELLOW**).

- C. Locate Panel A from the skid set. Also, locate four supplied M6-1.0 x 30 mm. bolts and two supplied bowl washers. With the front of Panel A covering the screw holes previously removed, insert two 30 mm. bolts through the front holes of Panel A where the factory screws were removed. Also, insert two 30 mm. bolts and two bowl washers through the two holes directly behind the front two. Loosely tighten. See Picture 2A.

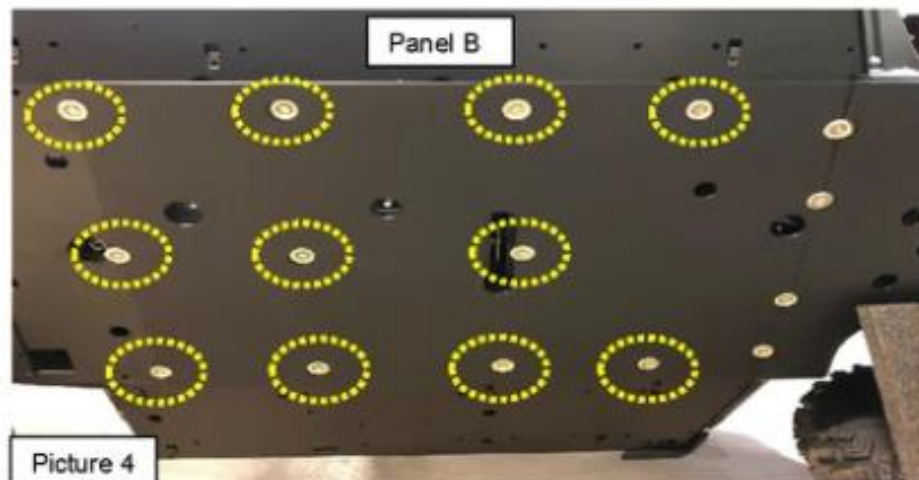


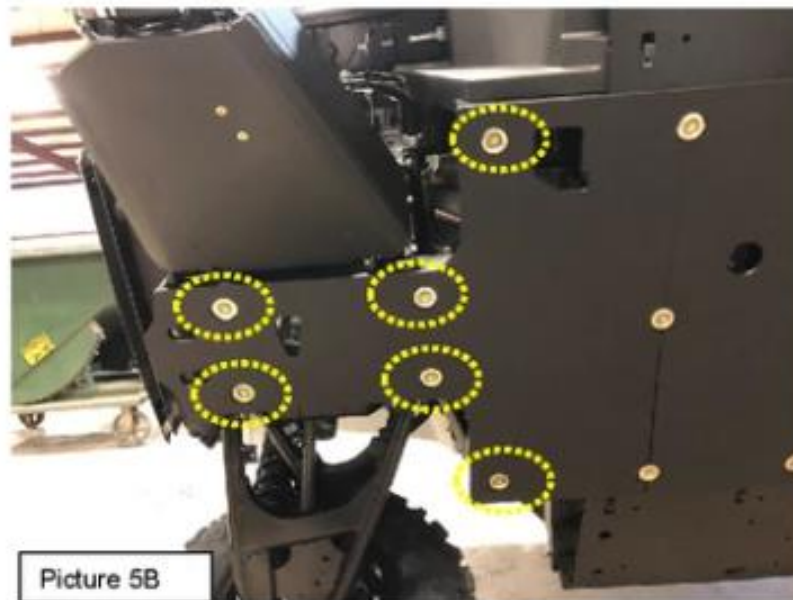
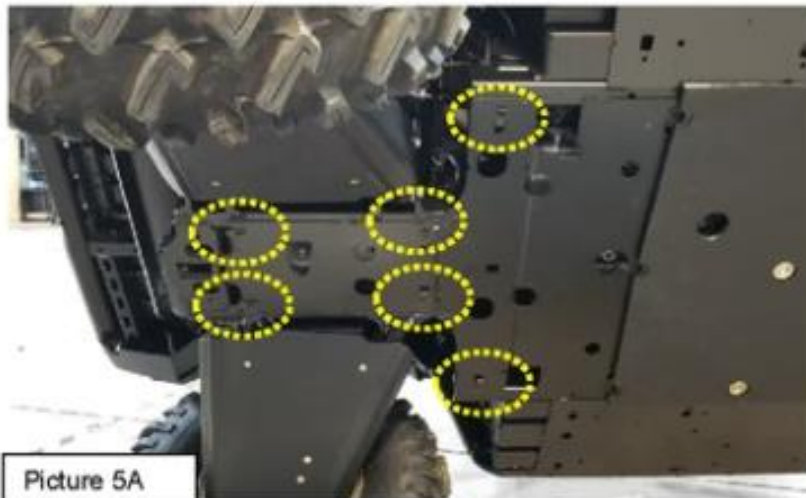
- D. Locate four supplied $\frac{1}{4}$ -20 x $\frac{3}{4}$ " thread cutting screws and four supplied bowl washers. Insert these at the rear of Panel A. See Picture 2B.



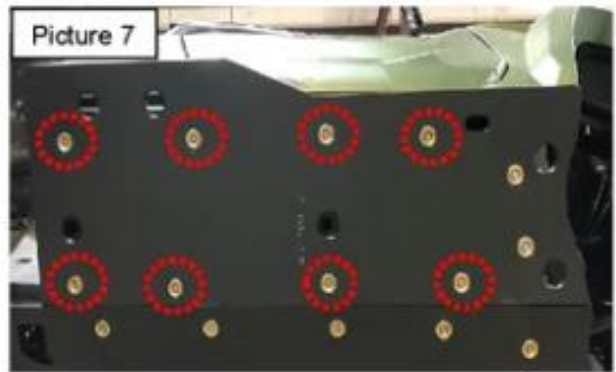
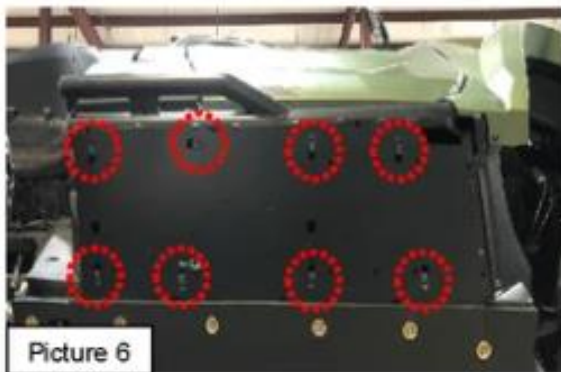


- E. Move to the center of the vehicle. Install eleven supplied $\frac{1}{4}$ - 20 extruded u-nuts into the eleven pre-drilled holes in the vehicle's metal floor pan. See Picture 3. Locate Panel B. Align the joint of Panel B with the joint of Panel A. Ensure there are no gaps. While holding Panel B into position at the center of the vehicle with the joint tightly aligned with Panel A, insert eleven $\frac{1}{4}$ -20 x $\frac{3}{4}$ " thread cutting screws and eleven supplied bowl washers into the previously installed $\frac{1}{4}$ - 20 extruded u-nuts. See Picture 4. Loosely tighten.

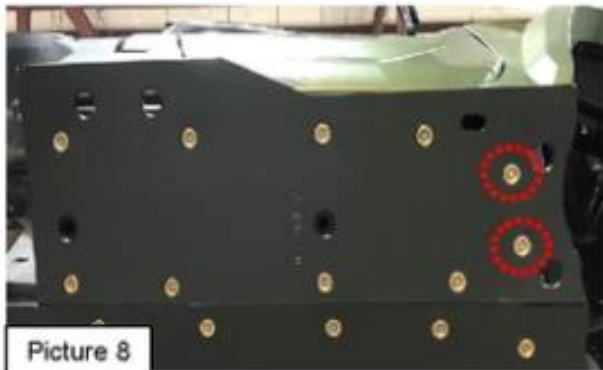




- F. Locate and install six $\frac{1}{4}$ - 20 extruded u-nuts into the six pre-drilled holes in the vehicle's metal floor pan. See Picture 5A. Locate Panel C of the skid set. Align the lap joint of Panel C with the lap joint of Panel B. Ensure there are no gaps. While holding Panel C into position at the rear of the vehicle and tightly aligned with Panel B, insert six supplied $\frac{1}{4}$ -20 x $\frac{3}{4}$ " thread-cutting screws and six supplied bowl washers into the previously installed $\frac{1}{4}$ - 20 extruded u-nuts. See Picture 5B. Loosely tighten. Make sure all lap joints between Panels A, B and C are tightly aligned and securely tighten all fasteners. **Note: Do not overtighten hardware – you can strip the threads out of the mounting holes.**



- G. Install eight $\frac{1}{4}$ - 20 extruded u-nuts over the eight pre-drilled holes in the vehicle's metal floor pan. See Picture 6. Locate Panel D. Holding Panel D into position, insert eight $\frac{1}{4}$ - 20 x $\frac{3}{4}$ " thread-cutting screws and eight supplied bowl washers into the previously installed $\frac{1}{4}$ - 20 extruded u-nuts. See Picture 7.
- H. Locate two supplied #14 x 1" TEK self-drilling screws and two supplied bowl washers. Insert one 1" TEK screw and washer into each of the remaining holes of the panel. See Picture 8.



- I. Repeat Steps G and H for Panel E. Securely tighten all fasteners. See Picture 9 for final install.

