



TRAILARMOR.COM  
839 HWY 2 CORINTH, MS 38834  
(662) 233-5700

# Installation Instructions

## **Installation Instructions for Honda Talon 1000R Mud Flap Fender Extensions** **TAMFFE-HT1000R**

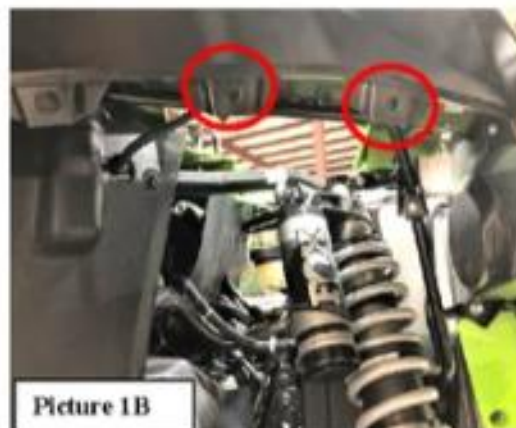
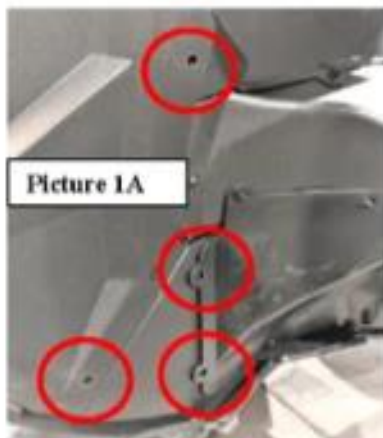
### **Warnings and Product Liability Disclaimer**

This product is intended to be used as a cosmetic accessory under normal equipment operation and should not be depended upon or used as a safety device. Manufacturer assumes no liability for personal injury or equipment damage as the result of use or installation of this accessory. User assumes all risk. User should carefully read all instructions prior to installation. **PLEASE NOTE:** This product was designed, fit and tested on new vehicle specifications. Any damage, modifications or excessive wear to your vehicle may require modification to the product and/or your vehicle to ensure proper fitment.



### **To Install Front Extensions:**

- A. Before starting the installation, remove six OEM push pins from the passenger front as shown in Pictures 1A and 1B. Retain as some will be reused.





TRAILARMOR.COM  
839 HWY 2 CORINTH, MS 38834  
(662) 233-5700

# Installation Instructions

- B. Locate two supplied  $\frac{1}{4}$ -20 u-nuts. Slide these onto the inside colored plastic at the top of the wheel well. These can be installed from the wheel well or underneath the hood. See Picture 2.



- C. Locate the passenger front mud flap. **Note**-There is one large hole on the inside rear of the mud flap. Also, note that there is an OEM push pin coming from inside the cab which protrudes out into the wheel well. This will be used as a location point for the install. Locate two of the OEM push pins. Reinstall these through the pre-drilled holes of the mud flap into the previous removed holes as shown in Picture 3.



TRAILARMOR.COM  
839 HWY 2 CORINTH, MS 38834  
(662) 233-5700

# Installation Instructions

- D. Locate two supplied  $\frac{1}{4}$ -20 x 1" torx truss screws. Insert one screw into each of the u-nuts previously installed in Step B. See Picture 4. Make sure to push the extension back into the curve of the factory flare before tightening to ensure the correct fitment.



- E. Locate one supplied #10 x  $\frac{3}{4}$ " Phillips flat top washer head screw and one 8-32 rectangular speed nut. Holding the front tab of the flap at the desired height, insert the screw through the pre-drilled hole of the flap. Tighten enough to go through the OEM headlight cover. Reach behind the headlight cover and install the speed nut onto the end of the screw. Securely tighten but **DO NOT OVERTIGHTEN!** See Picture 5.
- F. Locate two supplied Fascia push pins. These are the larger push pins in the bolt pack. Insert these into each of the inner holes at the rear of the mud flap. See Picture 6.



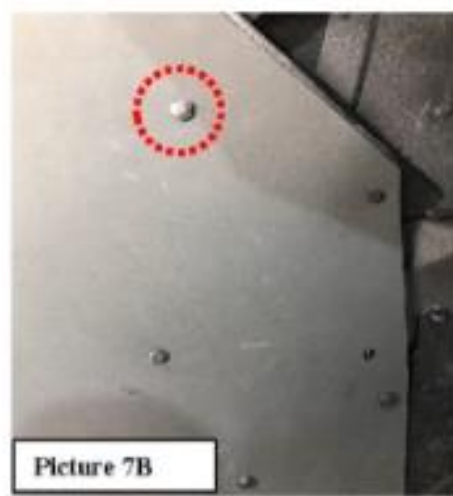




TRAILARMOR.COM  
839 HWY 2 CORINTH, MS 38834  
(662) 233-5700

# Installation Instructions

- G. **Note-** There are two holes remaining in the outside of the mud flap. These will need to be drilled out with a 5/16" drill bit. Be careful and only drill through the first layer of plastic. Locate one OEM push pin. Insert the push pin into the lower hole as shown in Picture 7A.



- H. Locate one supplied Fascia push pin. Again, this is the larger push pin in the bolt pack. Insert the push pin into the remaining hole as shown in Picture 7B. Repeat Steps A through H for the driver side.

## To Install Rear Extensions:

- I. Before starting the rear installation, remove six factory push pins. See Pictures 8A and 8B.



- J. Locate the supplied small metal brackets from the mud flap set. Also, locate four supplied 1/4-20 u-nuts. Clip the u-nuts onto the metal brackets as shown in Picture 9.

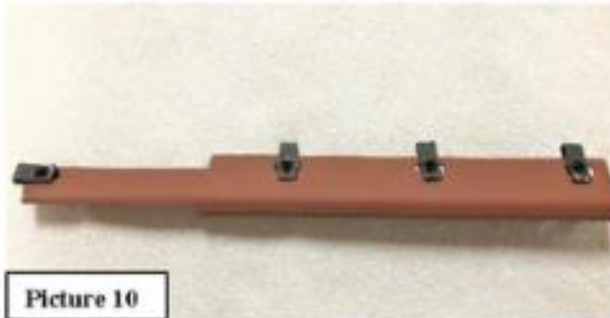


TRAILARMOR.COM  
839 HWY 2 CORINTH, MS 38834  
(662) 233-5700

# Installation Instructions



Picture 9



Picture 10

- K. Locate the large metal brackets from the mud flap set. Also, locate eight supplied  $\frac{1}{4}$ -20 u-nuts. Clip the u-nuts onto slotted holes of the metal brackets as shown in Picture 10.
- L. Locate one supplied  $\frac{1}{4}$ -20 x  $\frac{5}{8}$ " torx truss screw. Holding the small bracket into position, insert the screw through the front hole of the factory bracket and into the short end of the supplied bracket. See Picture 11.



Picture 11



Picture 12A

- M. Locate three supplied long push pins. Holding the large bracket into position, insert one push pin through the factory flare into the metal bracket. The bracket will need to be pushed in tight against the factory flare for the push pins to fasten. See Pictures 12A and 12B.



Picture 12B



TRAILARMOR.COM  
839 HWY 2 CORINTH, MS 38834  
(662) 233-5700

# Installation Instructions

- N. Locate two supplied  $\frac{1}{4}$ -20 x  $\frac{5}{8}$ " torx truss screws. Also, locate the passenger side mud flap.  
NOTE- There is an angle iron shaped cut out in the front of the mud flap. This cut out will slide over the angle iron bracket at the front of the wheel well where the small bracket was attached. Insert one torx truss screw through the mud flap into the small metal bracket and one into the lower hole of the large bracket. Loosely tighten. See Picture 13.



- O. Locate three supplied  $\frac{1}{4}$ -20 x 1" torx truss screws. Insert one screw into each of the three holes just above the two previously installed. Loosely tighten. See Picture 14.  
P. Locate two factory push pins. Holding the extension into position at the rear, insert one push pin into each of the rear holes. See Picture 15.



- Q. Locate one supplied long push pin. Insert the push pin into the remaining hole at the top of the wheel well. The long push pin must be used at this location to reach through all the plastic layers and fasten correctly.  
R. Locate one supplied plastic strap. Also, locate the factory screw at the rear top of the factory bed side. Remove the factory screw, insert through the plastic strap and re-install into the bed side. See Picture 17.







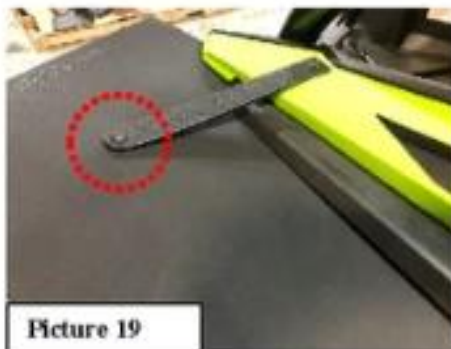
TRAILARMOR.COM  
839 HWY 2 CORINTH, MS 38834  
(662) 233-5700

# Installation Instructions

- S. Holding the extension at the desired height, use a 5/16" drill bit to drill through the plastic strap and through the fender extension. See Picture 18.

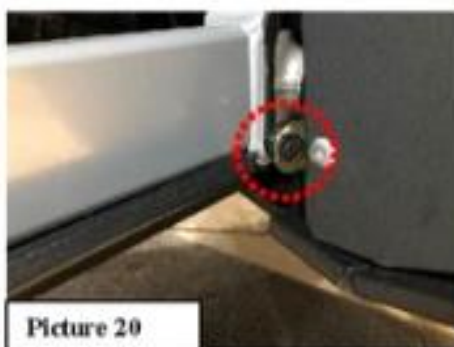


Picture 18



Picture 19

- T. Locate one supplied 1/4-20 x 5/8" torx truss screw and one 1/4-20 nylock nut. Insert the screw through the strap, through the previously drilled hole, and secure with the nylock nut. See Picture 19. Tighten all fasteners securely.
- U. Locate one factory push pin. Insert the push pin through the small bracket and through the frame at the bottom front of the extension. See Picture 20. Repeat for the driver side. The driver side will have a different profile, but installation will be the same. See Picture 21 for full install.



Picture 20



Picture 21

Enjoy! Any questions, contact Trail Armor at 662-233-5700 or [www.trailarmor.com](http://www.trailarmor.com).