



TRAILARMOR.COM
839 HWY 2 CORINTH, MS 38834
(662) 233-5700

Installation Instructions

Installation Instructions for Yamaha Wolverine RMAX 4 Mud Flap Fender Extensions TAMFFE-YW-RMAX4

Warnings and Product Liability Disclaimer

This product is intended to be used as a cosmetic accessory under normal equipment operation and should not be depended upon or used as a safety device. Manufacturer assumes no liability for personal injury or equipment damage as the result of use or installation of this accessory. User assumes all risk. User should carefully read all instructions prior to installation. **PLEASE NOTE:** This product was designed, fit and tested on new vehicle specifications. Any damage, modifications or excessive wear to your vehicle may require modification to the product and/or your vehicle to ensure proper fitment.



To Install Rear Extensions:

- A. Locate one OEM screw in the front lower passenger side rear fender well. Remove and discard. See Picture 1.



Picture 1



Picture 2

- B. Just above the screw previously removed, there is another OEM bolt which will need to be removed temporarily. Locate the supplied metal brackets from the Trail Armor set (stamped RM4-L & R). Also, locate two supplied M6-1.0 U-nuts. Clip a u-nut onto each of the metal brackets. See Picture 2. Once the u-nuts are installed, insert the previously removed OEM bolt through the bracket into the original hole. Securely tighten.



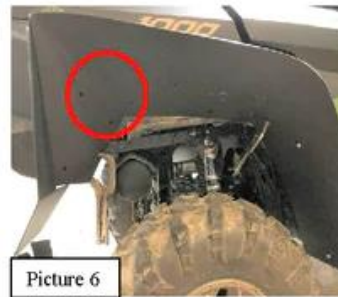
TRAILARMOR.COM
839 HWY 2 CORINTH, MS 38834
(662) 233-5700

Installation Instructions

- C. Locate two supplied M6-1.0 x 20 mm. screws. Holding the passenger side extension into position, insert one screw into the lower front hole, and another through upper front hole into the u-nut previously installed onto the metal bracket. See Picture 3. Loosely tighten.



- D. Check for alignment of the rear of the extension. Using vise-grips or vise-grip clamps, secure the rear of the extension. BE SURE that the roll at the front of the extension and the bend on the rear are pressed tight against the OEM factory flare. See Picture 4.
- E. Locate six supplied push pins. Using a 9/32 drill bit, with the extension pressed tight against the OEM flare, drill through each of the front two holes closest to the front at the roll part of the extension. See Picture 5. Secure with the push-pins.



- F. Once the front is secured, move to the four located on either side of the bend at the rear. Once again, check alignment of the extension. As done in the previous step, drill the holes and insert four push pins. See Picture 6. The remaining six holes can now be done as well. Repeat for the driver side.

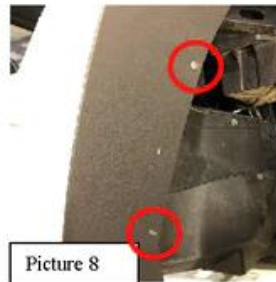


TRAILARMOR.COM
839 HWY 2 CORINTH, MS 38834
(662) 233-5700

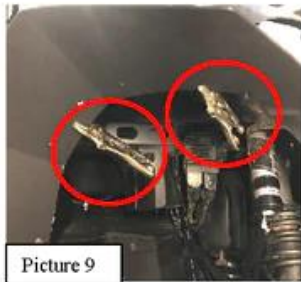
Installation Instructions

To Install Front Extension:

- G. Locate and remove the two OEM screws in the rear of the front fender well. Retain as they will be reused. See Picture 7.



- H. Locate the Trail Armor front passenger side extension. Holding the extension flush with the bottom of the rocker panel, reinstall the two OEM screws. See Picture 8.
- I. Once the OEM screws are installed, push the bends of the extension tight against the top of the fender well and align the inside of the extension. Also, check alignment of the front of the extension next to the headlight trim. Using vise grips or clamps, temporarily secure the extension. See Pictures 9 and 10.



- J. The hole in the very front of the extension is critical so make sure the extension is positioned so that the screw will go through the factory fender well. See Picture 11.



TRAILARMOR.COM
839 HWY 2 CORINTH, MS 38834
(662) 233-5700

Installation Instructions

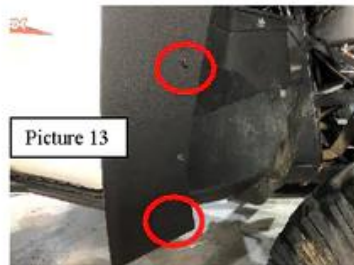


Picture 11

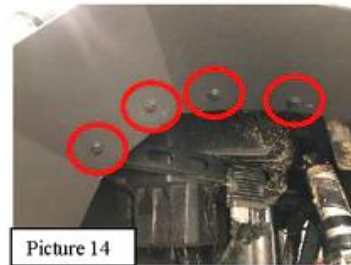


Picture 12

- K. Once all alignments are done, locate one supplied #10 x 3/4" Phillips washer head screw and one rectangular speed nut. Insert the Phillips head screw through the front hole of the extension into the factory fender well. See Picture 12. Back the screw out until the point of the screw is flush with the inside of the fender. Position the speed nut over the point of the screw and tighten.
- L. Recheck alignment of the extension and the inside of the factory fender.
- M. Locate six supplied push pins. As done on the rear, drill through the remaining holes of the extension one at a time and insert the push pins. See Pictures 13 and 14. Repeat for the driver side.



Picture 13



Picture 14

Enjoy! Any questions, contact Trail Armor at 662-233-5700 or www.trailarmor.com.