

## AL doors for CFMOTO ZFORCE 800 / 800 EX

**No.:** 2444.6863.1  
**Brend:** CF Moto  
**Model:** ZFORCE 800/800EX(2014-)/  
ZFORCE 500(2016-)  
**Material:** 2 mm aluminum sheet / Ø 38x1,5 mm steel tube



### SAFETY NOTICE

- \* These doors are made to be used only in conditions specified by the manufacturer of the machine.
- \* Do not operate the vehicle with damaged doors or their components.
- \* Do not use these doors if the fasteners are loose.
- \* User must regularly check and make sure that there is no damage to the fasteners/brackets, and make sure that the bolts did not become loose.
- \* Recommended regular use of grease lubricant on all moving parts.

### INSTALLATION NOTICE

- \* Please follow these instructions carefully, professional installation highly recommended
- \* Must use protective gear during installation
- \* For safety reasons these doors can not be installed on models not specified above.

### REQUIRED TOOLS

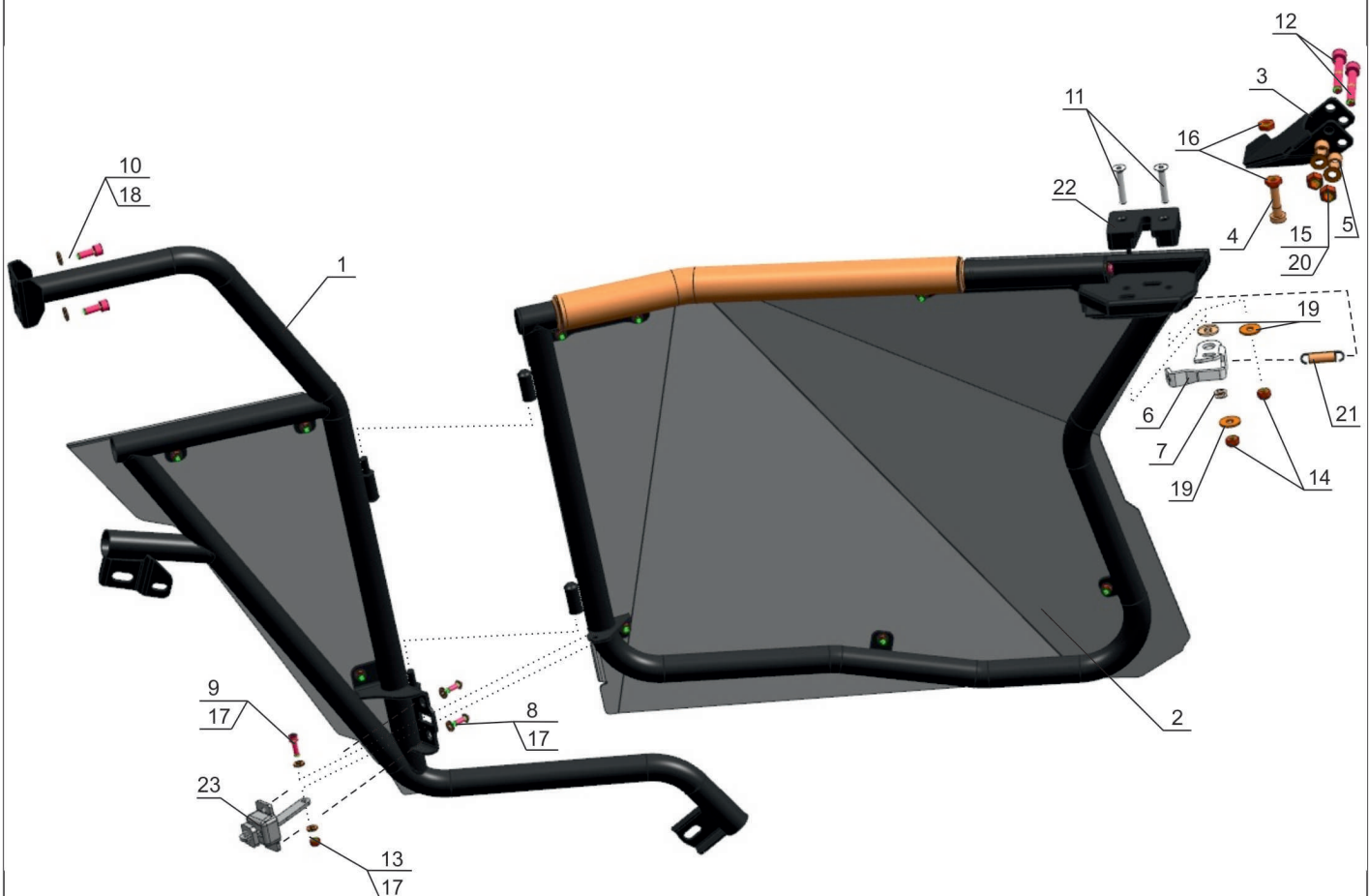
- \* Set of sockets and wrenches
- \* Set of hex-nut wrench
- \* Pistons puller tool
- \* Torque wrench

### TORQUE SETTING

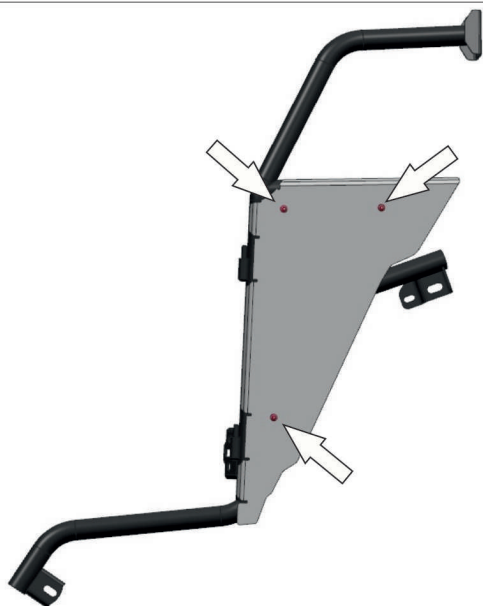
- \* M6 - 9 N·m, \* M8 - 30 N·m, \* M12 - 44 N·m.

# PARTS LISTING

1. Base frame assembly.....	2 pc	17. Washer 6.....	8 pc
2. Door assembly.....	2 pc	18. Washer 8.....	4 pc
3. Door lock bracket.....	2 pc	19. Enlarged washer 8.....	6 pc
4. Door lock axle.....	2 pc	20. Washer 10.....	4 pc
5. Spacer of Door lock bracket.....	4 pc	21. Spring.....	2 pc
6. Opening lever.....	2 pc	22. Door lock.....	2 pc
7. Spacer of Opening lever.....	2 pc	23. Opening limiter.....	2 pc
8. Screw M6x16.....	4 pc		
9. Fillister-head screw M6x20.....	2 pc		
10. Fillister-head screw M8x20.....	4 pc		
11. Slotted countersunk head screw M8x45.....	4 pc		
12. Fillister-head screw M10x60.....	4 pc		
13. Nut M6.....	2 pc		
14. Nut M8.....	4 pc		
15. Nut M10.....	4 pc		
16. Thin nut M10.....	4 pc		



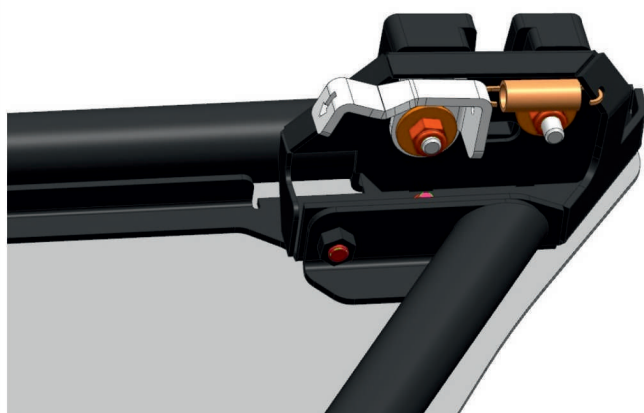
# INSTALLATION PROCEDURE



1. Remove the screws indicated by the arrows from base door assembly no.1 and then take off the sheet.



2. Fix opening limiter no.23 on the base assembly no.1 using screws no.8 and washers no.17



3. Install door lock no.22 and opening lever no.6 as shown on the scheme on page 2. Use grease lubricant for the opening lever.



# INSTALLATION PROCEDURE



4. Turn off the screws indicated by the arrows. Remove all the pistons from plastic covers 1, 2, 3. Remove panels 1, 2. Remove two bolts M6 which are hidden by panels 1, 2 and then remove the pistons. Remove panel 3.

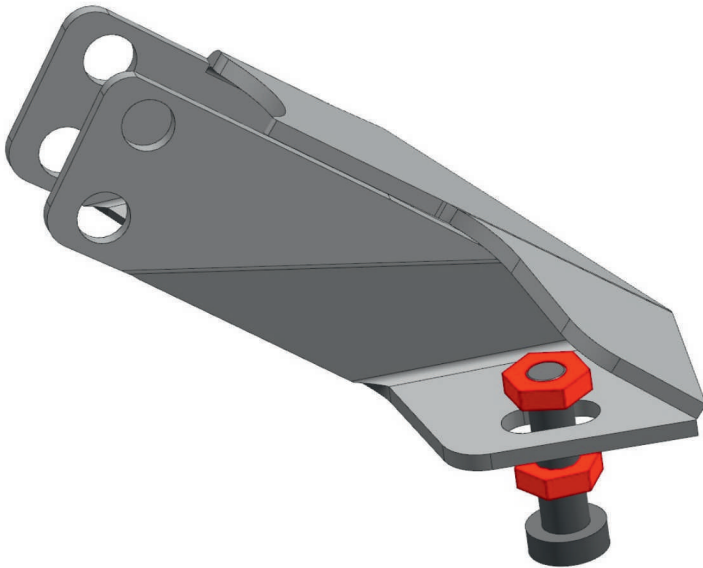


5. Remove the screws indicated by the arrows. Remove the original cage tubes.



6. Remove the screws M10 which are fastening the cage elements in the front side.

# INSTALLATION PROCEDURE



7. Fix door lock axle no.4 on bracket no.3 using thin (low) nuts no.16



8. From the inside, install spacers no.5 into the slots of the cage. Fix door lock bracket no.3 together with original rear view mirror using screws no.12, washers no.20 and nuts no.15.



9. Fix base door assembly no.1 to the original fastening points of the side tube: using screws no.10 and washers no.18 for the upper points, using original fasteners for the middle and lower points.



# INSTALLATION PROCEDURE



10. Mount doors no.2 on the hinges of base no.1. Fix opening limiter no.23 on doors no.2 using screw no.9, washers no.17 and nut no.13.



11. Adjust the height of the door using the slots of attaching base. Adjust horizontal position of the door using the door lock axle.  
12. Tighten all screws.



13. Put back the plastic panels and AL sheet which were demounted before.