



GLOBAL WEST SUSPENSION
655 South Lincoln Avenue / San Bernardino Ca. 92408
PHONE 877-470-2975 / FAX 909-890-0703
Web address: globalwest.net

PART #TBC-2 Tubular Rear Control Arms
Spherical Bearing And Del-A-Lum Bushings With A Sway Bar Attachment

- **2 assembled lower control arms**
- **4 bolts and nuts for sway bar**

1. Remove the lower control arms from the vehicle. A shop manual maybe helpful for assistance in this regard.

2. Your new lower control arms have a spherical bearing in one end of the arm. This end attaches to the frame, each bearing will have two steel spacers located one on each side of the spherical bearing. They are already installed. Note: The recess in the control arm goes to the inside of the car. Simply slip the arm with the spacers installed up into the frame. Make sure the grease fitting on the rear end side of the arm is facing down towards the ground. Slide the stock bolt through and torque to 70 ft/lbs.



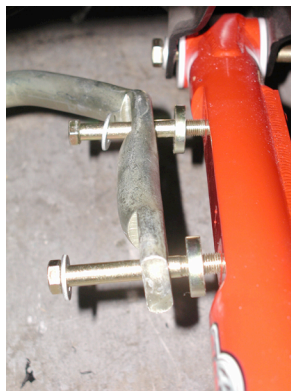
3. Slide the other end of the arm with the Del-A-Lum bushing and steel sleeve into the rear end. Use the stock bolts and torque to 70 ft/lbs. The bushings are pre-greased. NOTE: Del-A-Lum bushings have two thrust washers, one on each side of the control arm. They should be already installed on the bushing. If not place one on each side of the bushing and slide it up into the rear end mounting plates.

4. Once the control arms are installed, the



sway bar can be positioned correctly. First slide the sway bar up into position without using the 4 spacers provided in your kit. If the bar slides up without excessive space bolt the sway bar directly to the subframe using the hardware supplied in the kit.

If the sway has a gap use the sway bar spacers supplied in the kit and attach accordingly.



Torque the sway bar to frame bolts to 45 foot pounds.

Please feel free to call us 1- 877-470-2975 Global West Suspension for further assistance.

Global West also makes tubular upper and lower control arms for the front. Disc brake kits, handling kits, frame supports and many other products for your application.