

5869

HOLD-UP SWITCH/TRANSMITTER



The 5869 Hold-Up Switch/Transmitter is a finger-operated RF transmitting device. It is typically mounted under a counter or money draw for inconspicuous operation. When the transmitter is activated, it emits an RF signal to the receiver. The security system control panel sends a burglary alarm to the central station when a RF signal is received from an enrolled Hold-Up Switch/Transmitter.

Once activated, the 5869 Hold-Up Switch/Transmitter can only be reset by the reset key. The 5869 also incorporates tamper switches that are activated when the cover is removed, or if the unit is forcibly removed from its installation location.

FEATURES

- No wires to run
- Easily mounted
- Includes battery
- Front and back tamper resistant
- Quick enrollment

SPECIFICATIONS

Physical

- 1-15/16" W x 5-15/16" H x 1 3/16"D (50mm x 150mm x 30mm)

Frequency

- 345 MHz

Battery

- 3V Lithium ADEMCO 466 or equivalent

Agency Listings

- UL listed for Household Burg UL 1023, Hold-up Burg UL 636 and CUL 634
- For certified UL commercial installations, use with 5881ENHC tamper-protected wireless receiver

Compatibility

- Fully compatible with all VISTA Control Panels

5869

HOLD-UP SWITCH/TRANSMITTER

INSTALLATION

Mount the 5869 under a counter or money drawer for easy access by the cashier. Refer to the steps and figures that follow for typical mounting instructions. Before mounting the 5869 permanently, perform Go/No Go tests to verify adequate transmitter signal strength at desired mounting location (refer to the Security System Control Panel Installation and Setup Guide).

1. Remove the two screws (Figure 1) securing the cover to the 5869 case.

NOTE: The holes located in the opposite corner to the screws that secure the cover to the case, provide a means for securing the transmitter to the counter or drawer.

2. Using the case as a drill template, position the case in the desired location.
3. Drill a 1/16" pilot hole at the breakaway tamper release hole and the two case mounting holes (Figure 2).

4. Attach the case to the counter or money drawer using one No. 6 x 3/4 screw (supplied) at the breakaway tamper release.
5. Install the battery (see BATTERY INSTALLATION/REPLACEMENT).
6. Secure the cover to the case with the two screws removed in step 1.
7. Secure the assembled case to the counter or drawer using the two No. 6 x 2 mounting screws supplied (Figure 2).

PROGRAMMING

The 5869 Hold-Up Switch/Transmitter should be programmed as a 24-hour silent zone type. Refer to the Security System Control Panel Installation and Setup Guide for programming instructions.

- During programming of the control panel, the 5869 Hold-Up Switch/Transmitter should be treated as "RF" (i.e., supervised RF) Type
- The 5869 is one closed input loop zone (loop 1)

Battery Installation/Replacement

1. Remove and retain screws securing the 5869 cover.
2. Observing correct polarity, insert the battery into the battery holder.

NOTE: Use care not to bend the antenna while attempting to install battery.

3. Re-install screws to secure cover and/or assembly. Refer to Figure 1.

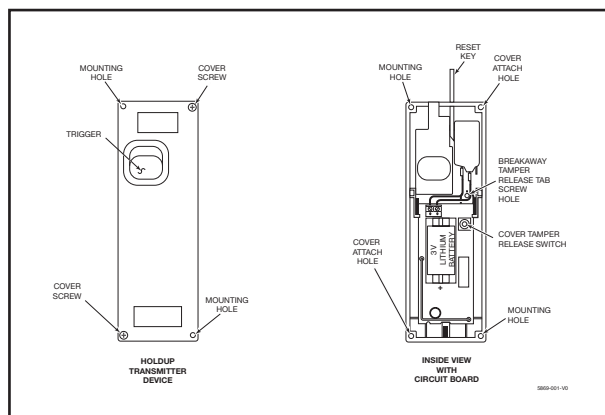


Figure 1

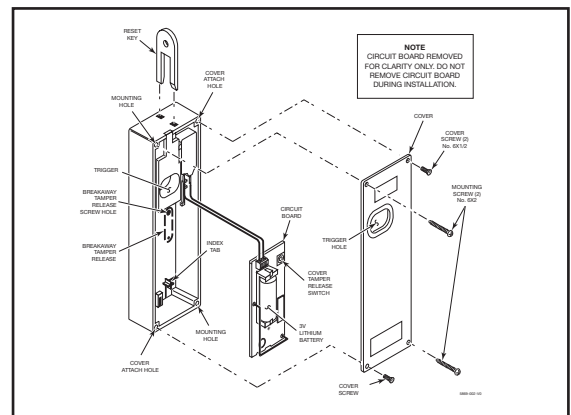


Figure 2

ORDERING

5869

Hold-Up Switch/Transmitter

Automation and Control Solutions
Honeywell Security & Communications
2 Corporate Center Dr. Suite 100
P.O. Box 9040
Melville, NY 11747
www.honeywell.com

Honeywell

L/5869TRAN/D
September 2008
© 2008 Honeywell International Inc.