

SAM4s SAP-530F Restaurant POS System

The SAM4s SAP-530F Android Cash Register
Powered by SAM4pos POS Software

1-800-863-2274



Key Features

- Designed for all types of Restaurants
- Kitchen Printers
- Kitchen Video System interface
- Liquor Dispenser Interface
- Emailed end of day reports
- Cloud-based reporting and programming
- No More “Z” out of a report
- Select the date range for reports
- 3 Year Warranty
- EMV Credit Card Interface

The **SAM4s SAP-530FT Android Cash Register Powered by SAM4pos POS software** – simplicity and speed of a real-world tested cash register combined with the modern technology of a Android Tablet based system. No sacrificing functions in the front-of-the-house for features needed in the office. The **SAM4s-SAP-530FT Android Cash Register** is purpose built for all types of restaurants like casual dining, fine dining, bars, lounges, fast casual, fast food and much more. You will have all the font-of-the-house **POS** features you require.

Highly Configurable Kitchen Printer Requisitions

- Kitchen requisition printed on standard 3” Bond Paper.
- Optional hand-held Ordering Tablets
- Insure Speed, Security and Efficiency



Hand Held Technology

- Optional tablet for taking orders at the table
- Use as a line buster
- Use in outdoor seating areas
- Many ways to implement a hand held



Optional Kitchen Video System

- Reduce Ticket Time
- Improve Kitchen Efficiency
- Reduces Errors/Comps

SAM4s SAP-530F Restaurant POS System

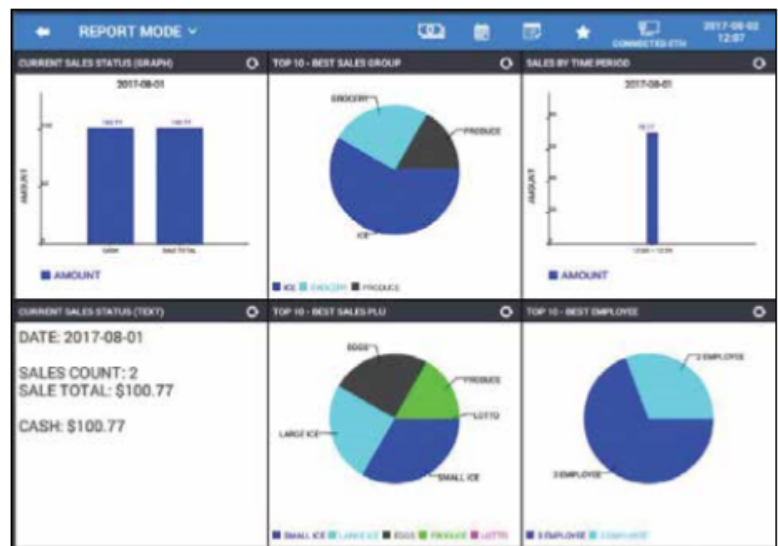
The SAM4s SAP-530F Android Cash Register Powered by SAM4pos POS Software

The **SAM4s SAP-530RT** unlike a traditional cash register uses the **SAM4pos** Android POS application. This application enables features and functions standard cash registers could never do. Just a few examples are no longer will you need to "Z" out a report like a traditional cash register before the next day starts, emailed End of Day reports and much more. With the **SAP-530RT** you need only select the date range you need reports for and it produces them.



Database Style Reporting

Report Dashboard Feature



Specifications

Processor:	Freescale i.MX6 Quad Core 1.0GHz, ARM Cortex TM -A9
Standard O/S:	Android 4.04 Operating System
Operator Display – Type:	9.7" TFT-LCD Touch Screen
Brightness:	Adjustable Up to 350 cd/m2
Resolution:	1024 x 768
Touch Panel:	5-Wire Resistive Touch
Customer Display:	Pop-Up Turret, 2 Lines by 16 Characters
Keyboard Capacity – Flat:	160 Programmable Locations
Raised:	Up to 90 Programmable Locations
Printer – Type:	80mm Direct Thermal, Drop-and-Print
Speed:	100mm per Second
MCR:	Integrated Dual Track MCR
Cash Drawer:	5 Bill, 5 or 6 Coin with Drawer Lock and Two Media Slots
Memory – RAM:	1GB DDR3
Flash:	8GB Nand Flash
Ports – Serial:	COM1, COM2 = DB9M With Pin 9 Voltage (+5V) COM3 = RJ45 With Pin 1 Voltage (+5V) COM4 = RJ45 With Pin 1 Voltage (+12V)
USB:	Two V2.0 (1 Front / 1 Rear)
Cash Drawer:	Three 24V (2 RJ11 Rear / 1 Internal)
LAN:	One RJ45 10/100 Base-T Ethernet (TCP/IP)
SD:	One SDHC Compatible
Wireless – WiFi:	Compatible with IEEE802.11b/g/n
Power Supply:	Internal 100-240V 50-60Hz
Current / Power Usage:	Approx. 25W
Operating Temperature:	32° F to 104° F (0° C to 40° C)
Humidity Range:	30% to 80% RH (Non-Condensing)
Dimensions – Terminal:	14-3/4"W x 9-3/4"H x 16-3/4"D (Including Turret Display)
Cash Drawer:	15-3/4"W x 4-3/8"H x 17-3/4"D
Shipping Carton/Weight:	22-1/2"W x 18"H x 21"D / 32.7 lbs.
Safety and EMI:	FCC, RoHS

Remote Support with Team Viewer



All Processors

