

SSV KIT - Yoshimura Slip-On Exhaust

Part number (SKU) : 715003716

Product:	Side-by-side
Project no:	487802164_rev1
Instruction Sheet P/N:	487802164
Revision no:	1
Revision date:	October 2017
Item covered:	Yoshimura Slip-On Exhaust

The following symbols may be used in this document:

WARNING

Indicates a hazardous situation which, if not avoided, could result in death or serious injury.

CAUTION: Indicates a hazard situation which, if not avoided, could result in minor or moderate injury.

NOTICE Indicates an instruction which, if not followed, could severely damage vehicle components or other property.

WARNING

- This kit is designed for specific applicable models only (authorized BRP dealers will confirm model(s)). It is not recommended for units other than the one (those) for which it was sold.
- If the installation of the kit requires a template, ensure template is to scale.
- Should removal of a locking device (e.g. lock tabs, self-locking fasteners, etc.) be required when undergoing disassembly/assembly, always replace with a new one.
- Torque wrench tightening specifications must strictly be adhered to.
- Unless otherwise specified, engine must be OFF when performing any operation on the vehicle.
- Always be aware of parts that can move, such as wheels, transmission components, etc.
- Some components may be HOT. Always wait for engine to cool down before performing work.

NOTE: USE TIGHTENING TORQUES IN THE FOLLOWING TABLE IF NOT OTHERWISE SPECIFIED.

	GRADE			
	5.8	8.8	10.9	12.9
M4	1.8 ± 0.2 N•m (16 ± 2 lbf•in)	2.8 ± 0.2 N•m (25 ± 2 lbf•in)	3.8 ± 0.2 N•m (34 ± 2 lbf•in)	4.5 ± 0.5 N•m (40 ± 4 lbf•in)
M5	3.3 ± 0.2 N•m (29 ± 2 lbf•in)	5 ± 0.5 N•m (44 ± 4 lbf•in)	7.8 ± 0.7 N•m (69 ± 6 lbf•in)	9 ± 1 N•m (80 ± 9 lbf•in)
M6	7.5 ± 1 N•m (66 ± 9)	10 ± 2 N•m (89)	12.8 ± 2.2 N•m (113)	16 ± 2 N•m (142)

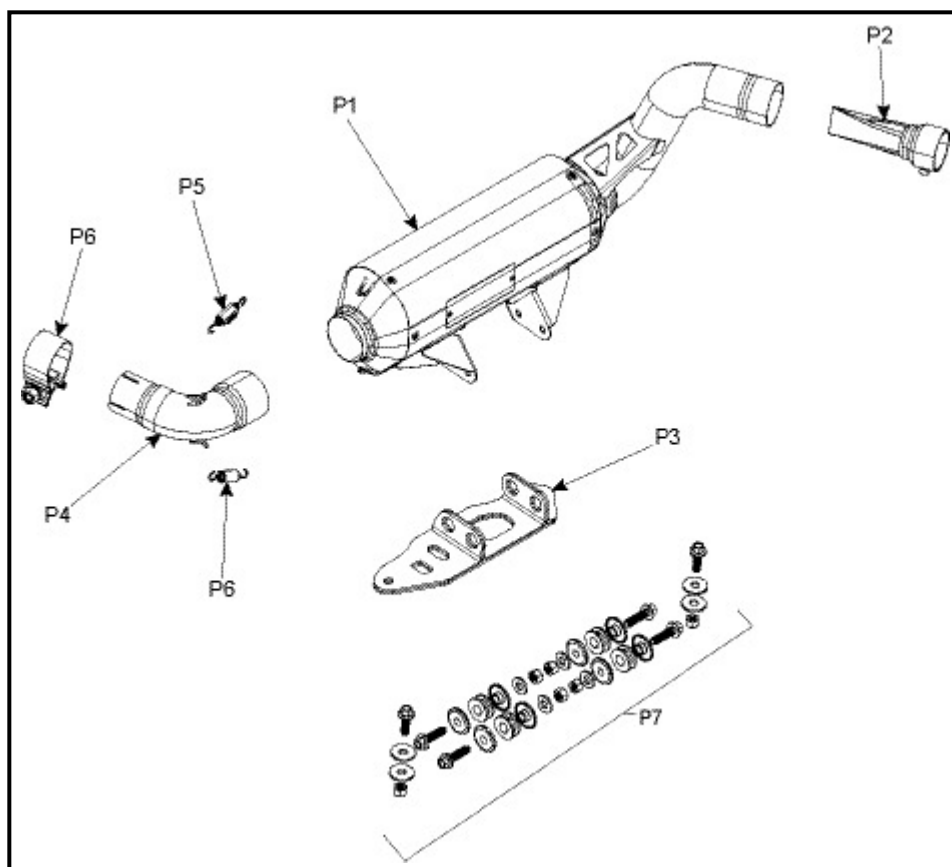
	lb•in)	± 18 lb•in)	± 19 lb•in)	± 18 lb•in)
M8	15.3 ± 1.7 N•m (135 ± 15 lb•in)	24.5 ± 3.5 N•m (18 ± 3 lb•ft)	31.5 ± 3.5 N•m (23 ± 3 lb•ft)	40 ± 5 N•m (30 ± 4 lb•ft)
M10	29 ± 3 N•m (21 ± 2 lb•ft)	48 ± 6 N•m (35 ± 4 lb•ft)	61 ± 9 N•m (45 ± 7 lb•ft)	73 ± 7 N•m (54 ± 5 lb•ft)
M12	52 ± 6 N•m (38 ± 4 lb•ft)	85 ± 10 N•m (63 ± 7 lb•ft)	105 ± 15 N•m (77 ± 11 lb•ft)	128 ± 17 N•m (94 ± 13 lb•ft)
M14	85 ± 10 N•m (63 ± 7 lb•ft)	135 ± 15 N•m (100 ± 11 lb•ft)	170 ± 20 N•m (125 ± 15 lb•ft)	200 ± 25 N•m (148 ± 18 lb•ft)
M16	126 ± 14 N•m (93 ± 10 lb•ft)	205 ± 25 N•m (151 ± 18 lb•ft)	255 ± 30 N•m (188 ± 22 lb•ft)	305 ± 35 N•m (225 ± 26 lb•ft)
M18	170 ± 20 N•m (125 ± 15 lb•ft)	273 ± 32 N•m (201 ± 24 lb•ft)	330 ± 25 N•m (243 ± 18 lb•ft)	413 ± 47 N•m (305 ± 35 lb•ft)

The illustrations in this document show typical construction of the different assemblies and may not reproduce the full detail or exact shape of the parts; however, they represent parts that have the same or similar function.

In the pictures below, parts may have been removed for clarity purposes.

Installation time is approximately 0.75 hour.

PARTS TO BE INSTALLED



Item	Description	Part Number	QTY
P1	Exhaust Muffler	Not available separately	1
P2	Spark Arrester Kit	715004859	1
P3	Mounting Bracket	Not available separately	1
P4	Tail pipe	Not available separately	1
P5	Spring	Not available separately	2
P6	Gear Clamp	Not available separately	1
P7	Hardware Kit	715004841	1
P8	Spring Hook	Not available separately	1

SERVICE PARTS

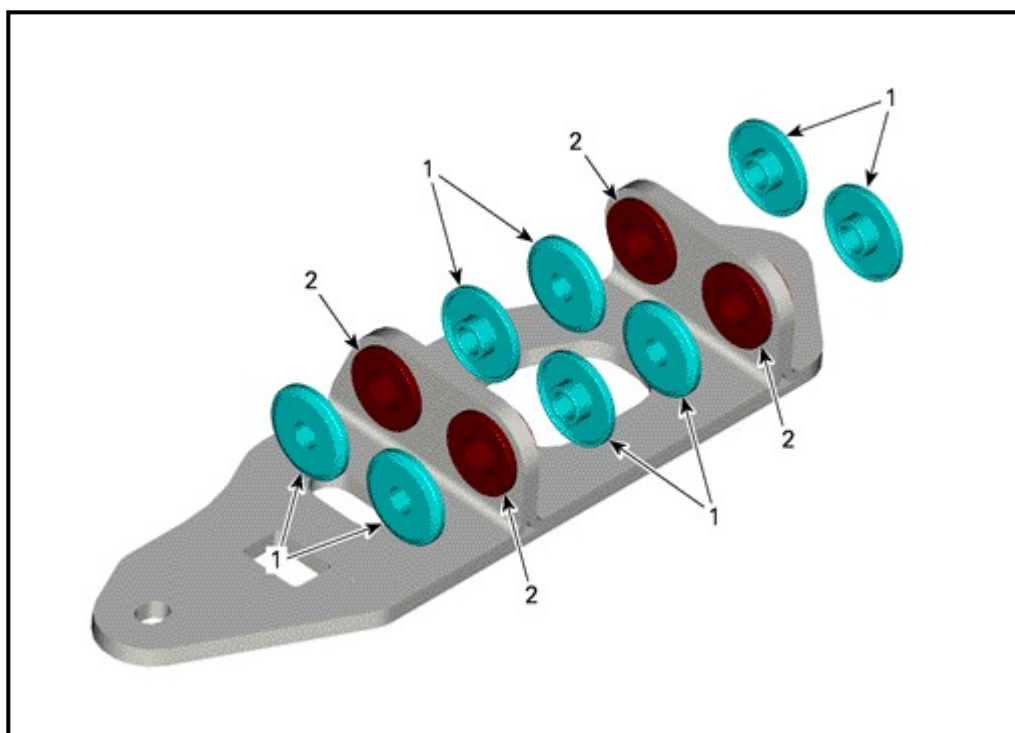
Description	Part Number	QTY
Muffler Repacking Kit	715003014	1

INSTRUCTIONS

⚠ CAUTION: Let vehicle cool down before attempting any kind of work on exhaust area.

Parts Preparation

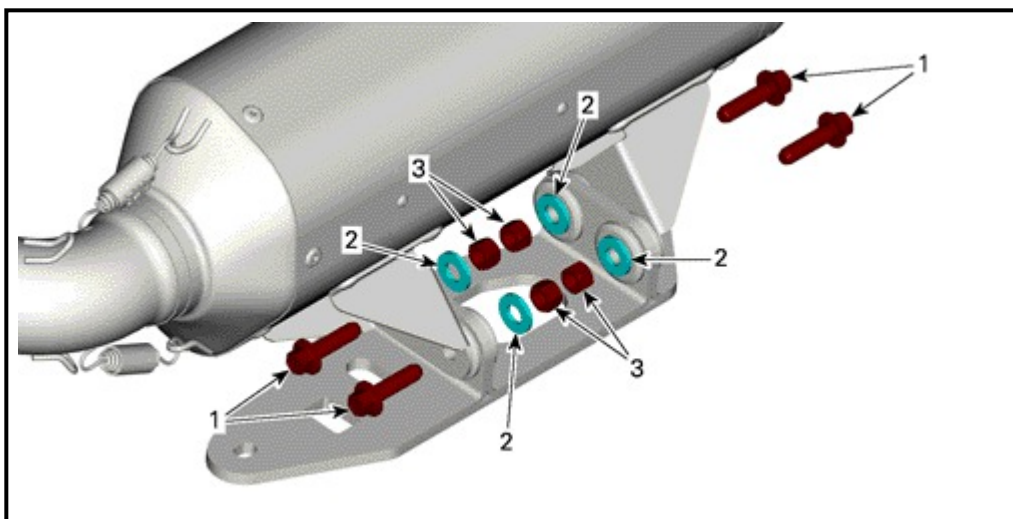
Install parts of the hardware kit [P7] on mounting bracket [P3] as illustrated.



1. Aluminum spacers
2. Rubber grommets

Install exhaust muffler [P1] on support bracket [P3] with hardware kit [P7]. Tighten nuts from hardware kit [P7] to specified torque.

tightening torque	
M8 nut	$24.5 \pm 3.5 \text{ N}\cdot\text{m}$ ($18 \pm 3 \text{ lbf}\cdot\text{ft}$)



1. M8 X 30 Flanged hex screws

2. Small 8 mm flat washers

3. M8 nuts

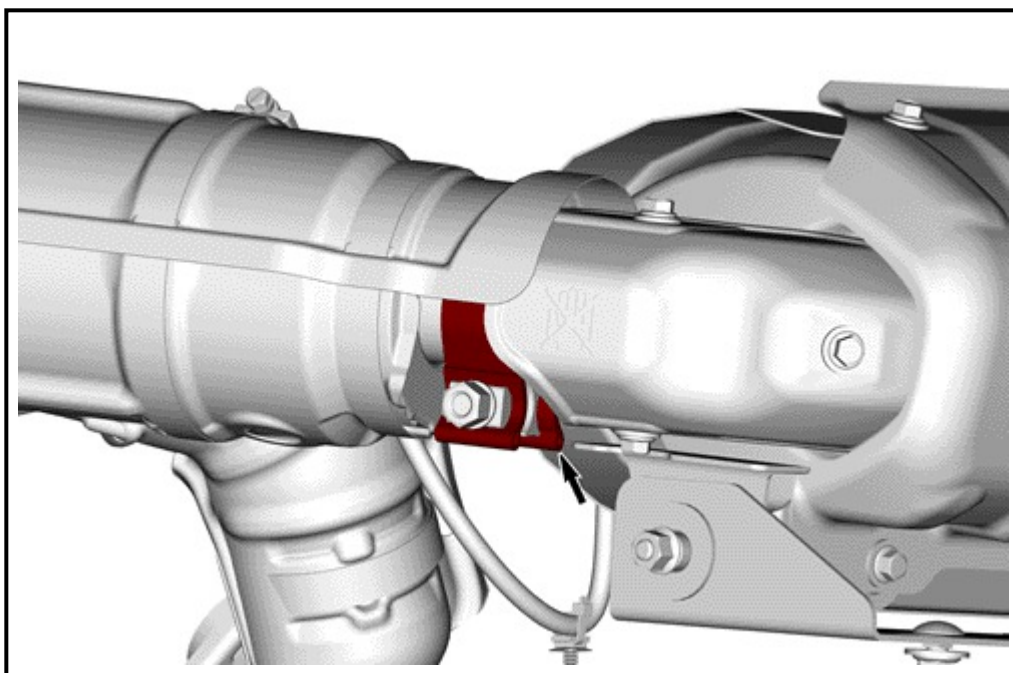
Vehicle preparation

Lift rear of vehicle and support it on the frame.

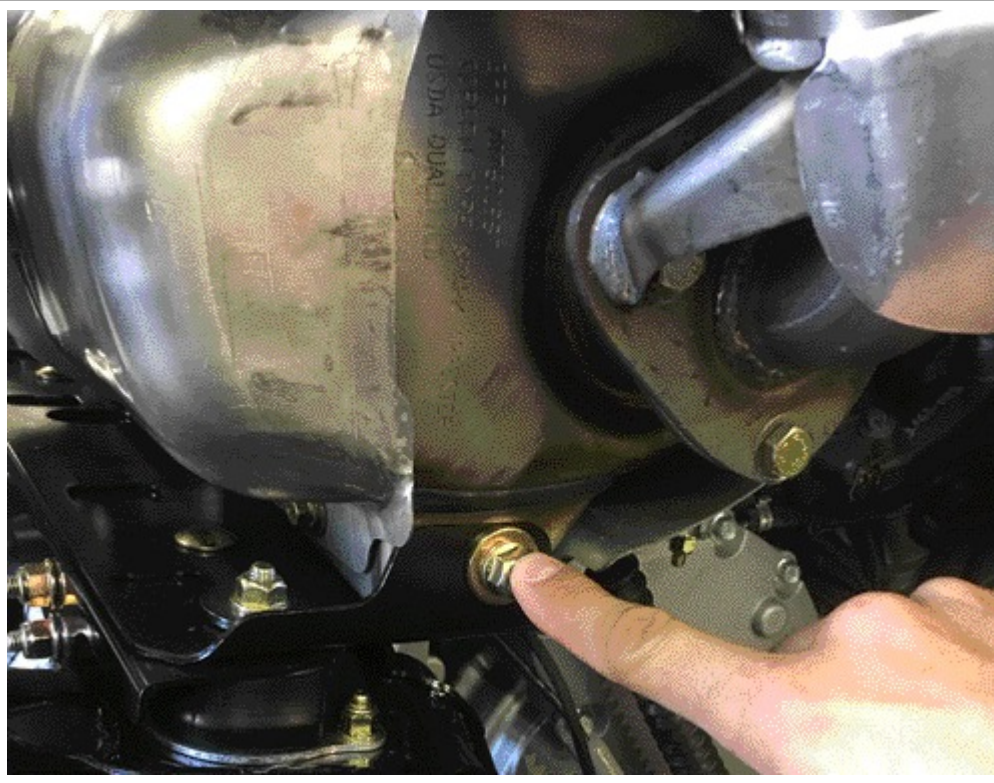
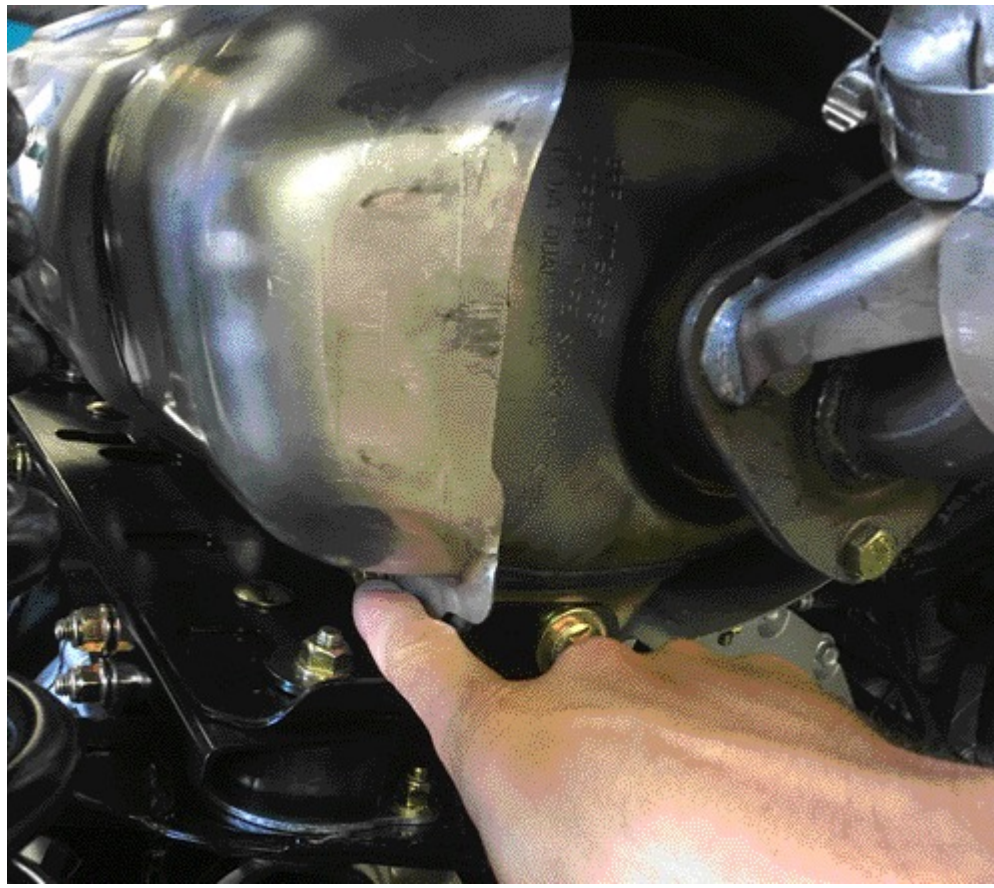
Remove rear wheels to facilitate exhaust removal.

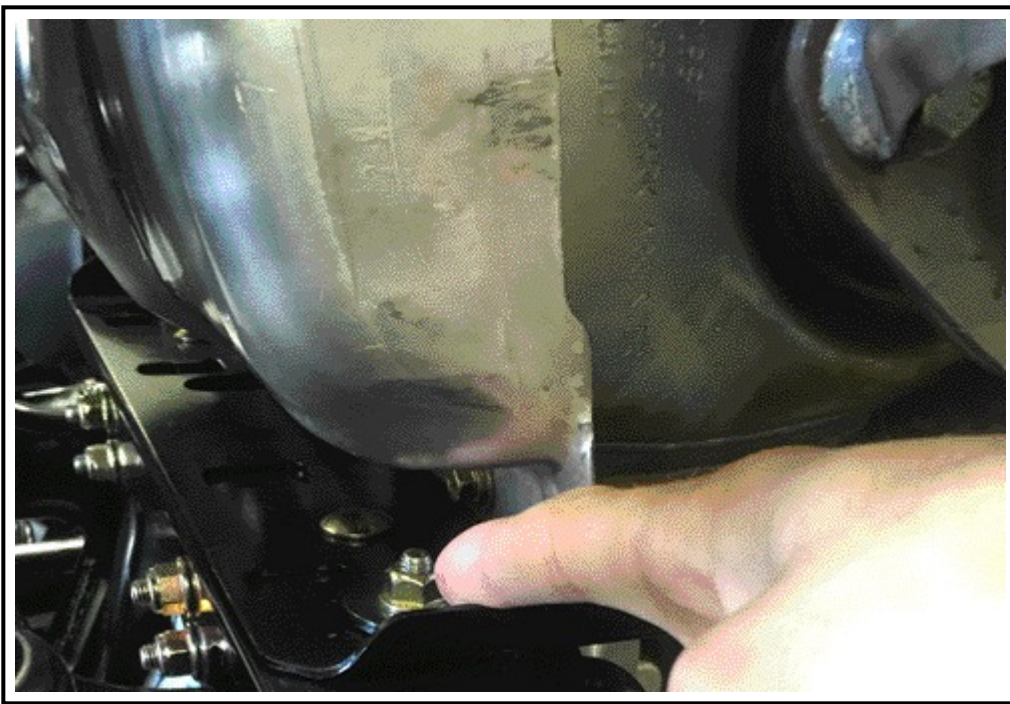
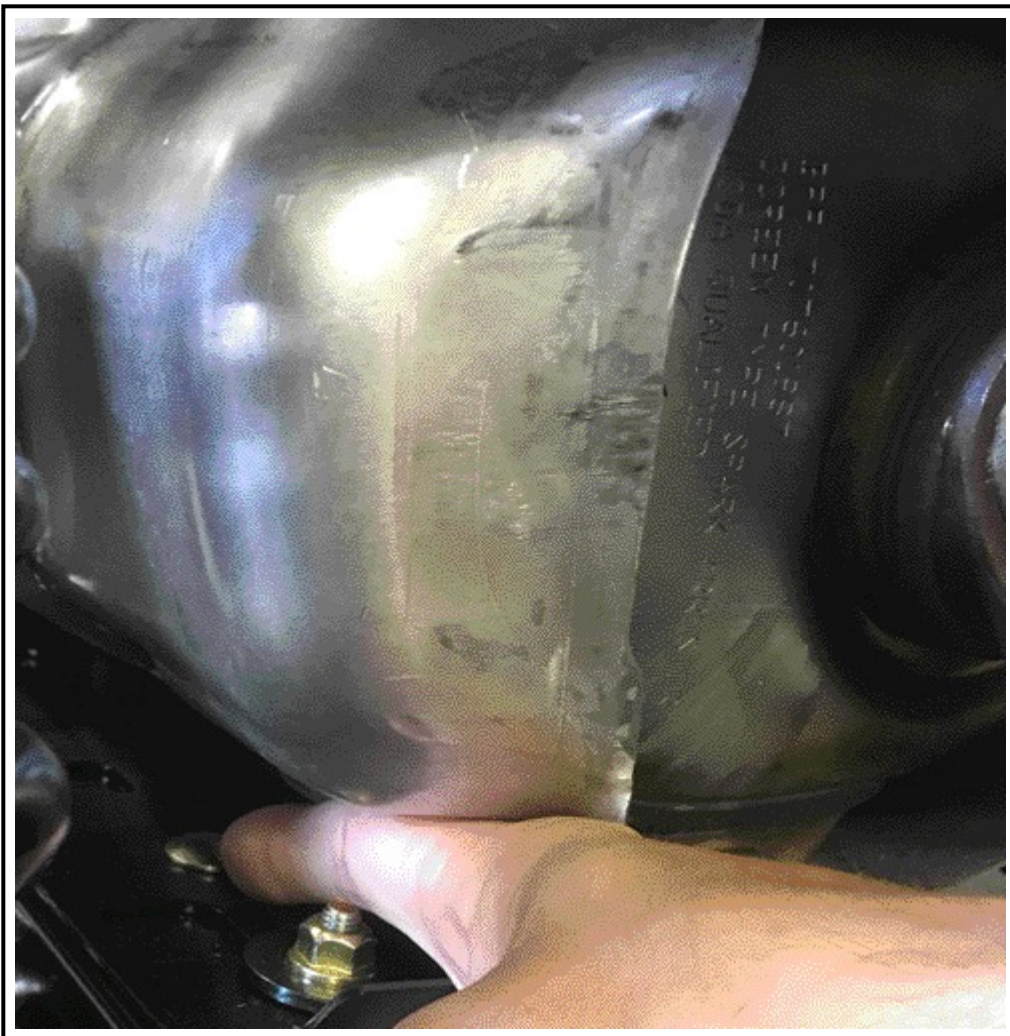
Loosen exhaust pipe clamp.

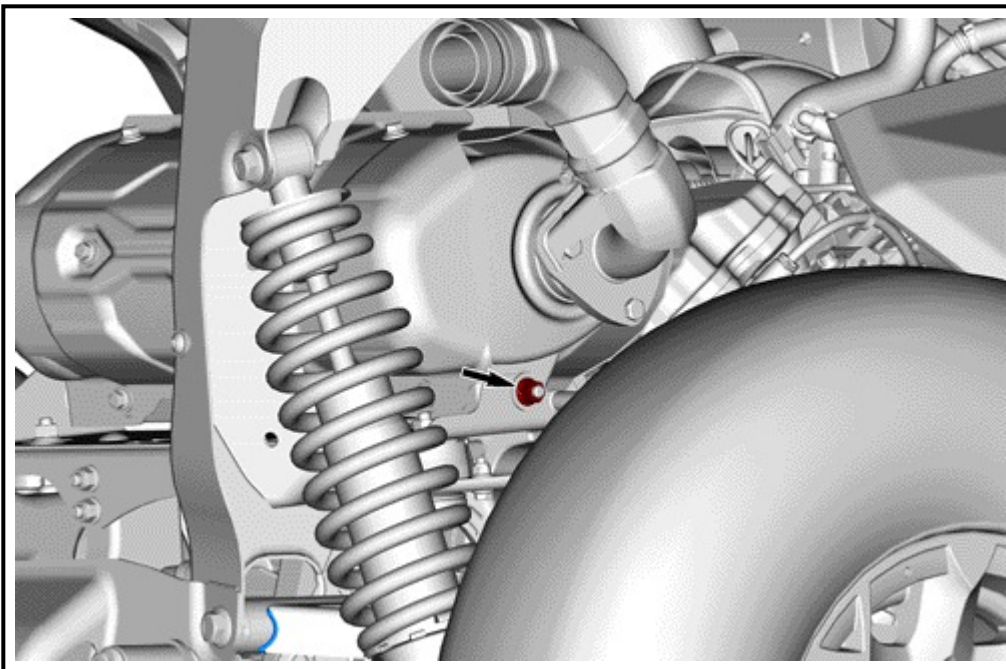
NOTE: Adding some penetrating oil such as XPS LUBE (P/N 293 600 016) can help removal of the exhaust pipe clamp.



Remove the heat shield and the muffler support bracket retaining nuts and washers on both sides.

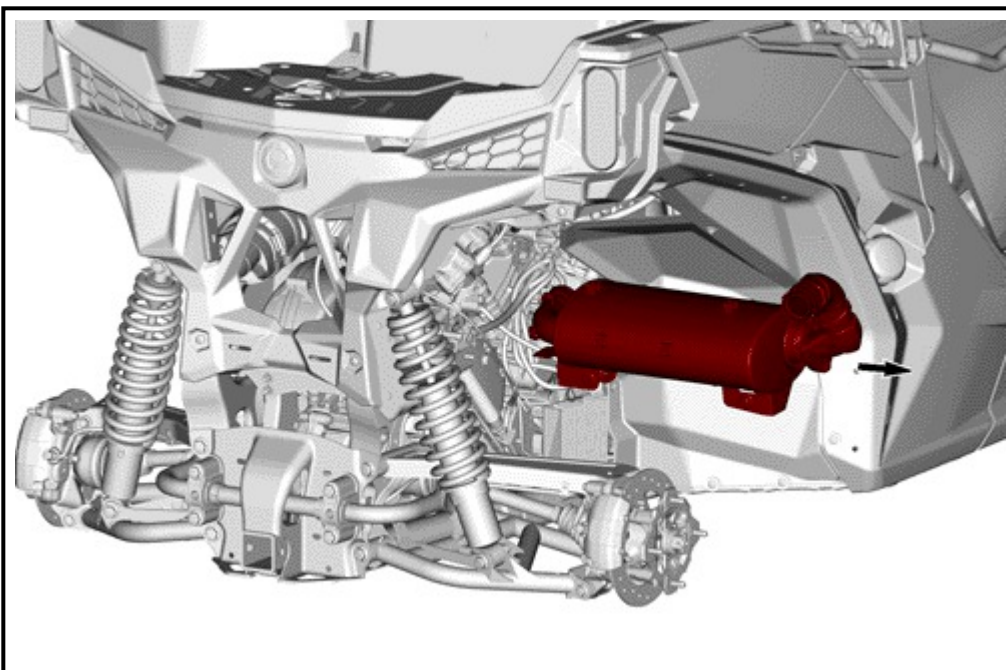






RH SIDE SHOWN, LH SIDE SIMILAR

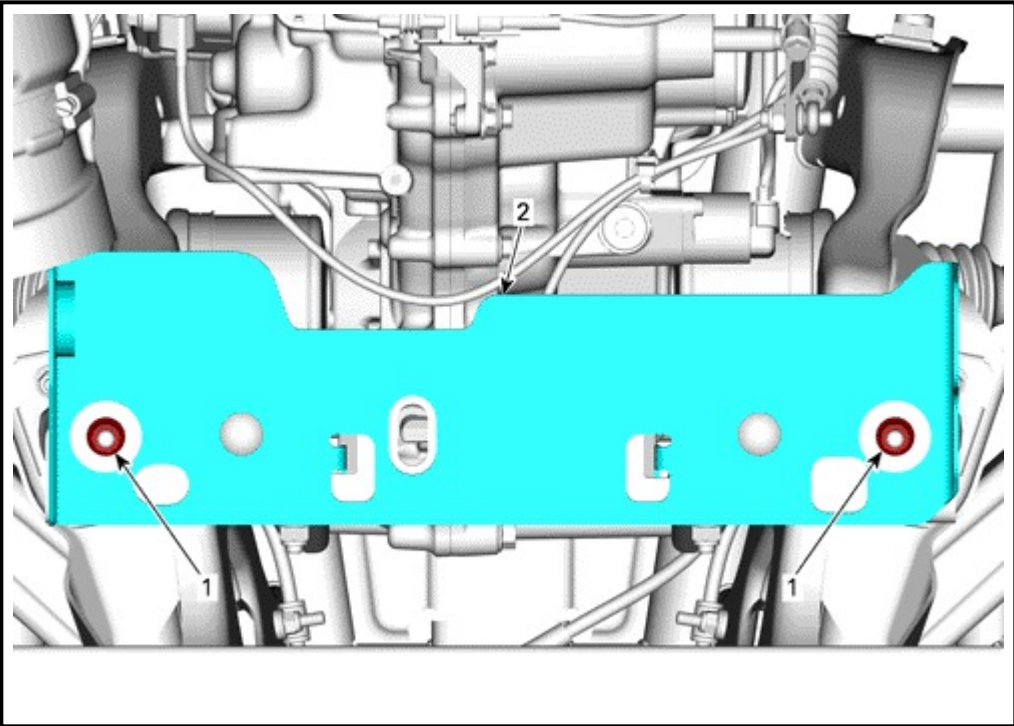
Remove muffler from the side of the vehicle.



NOTE: Wheels are removed for clarity.

Parts installation

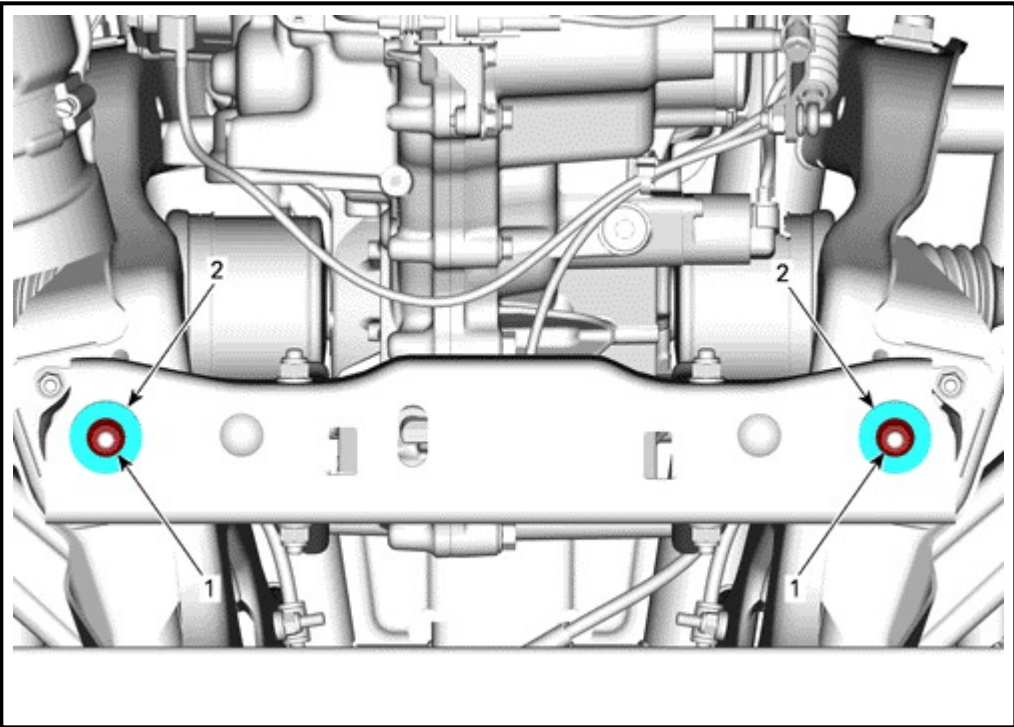
Remove exhaust support plate and its retaining nuts and washers. Hold the bottom fasteners to avoid losing them.



1. Exhaust support plate retaining nuts
2. Exhaust support plate

Reinstall the exhaust support plate retaining nuts and washers. Tighten nuts to specified torque.

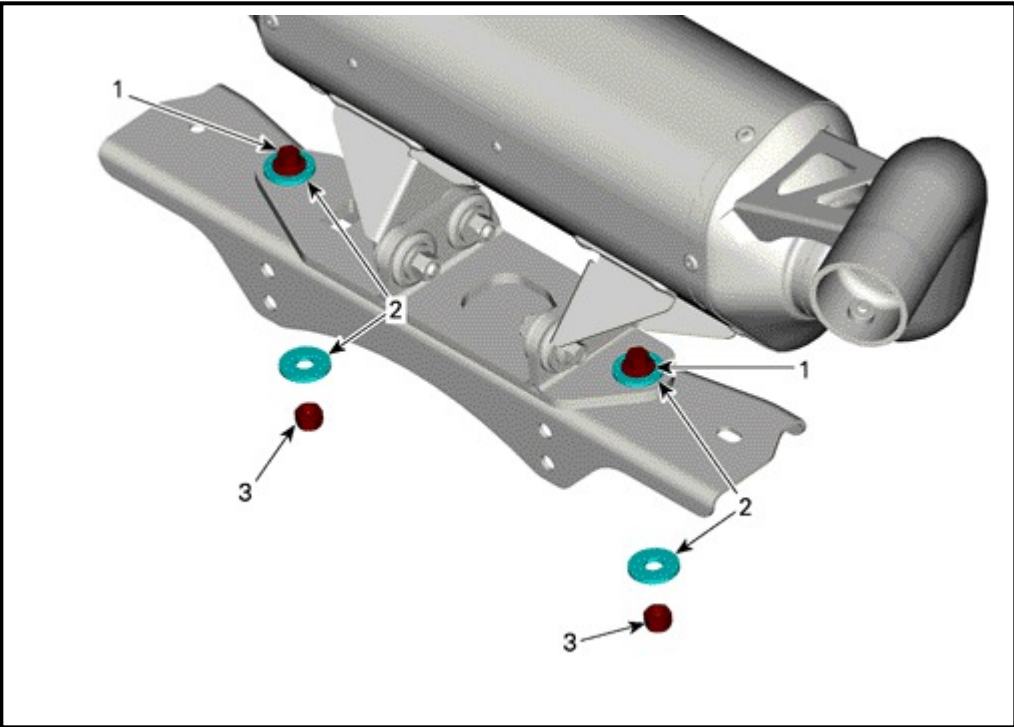
tightening torque	
Support plate retaining nuts	24.5 ± 3.5 N•m (18 ± 3 lbf•ft)



1. Exhaust support plate retaining nuts
2. Flat washers

Secure the mounting bracket [P3] on the vehicle frame with the hardware kit [P7]. Tighten nuts to specified torque.

tightening torque	
M8 nuts	24.5 ± 3.5 N•m (18 ± 3 lbf•ft)

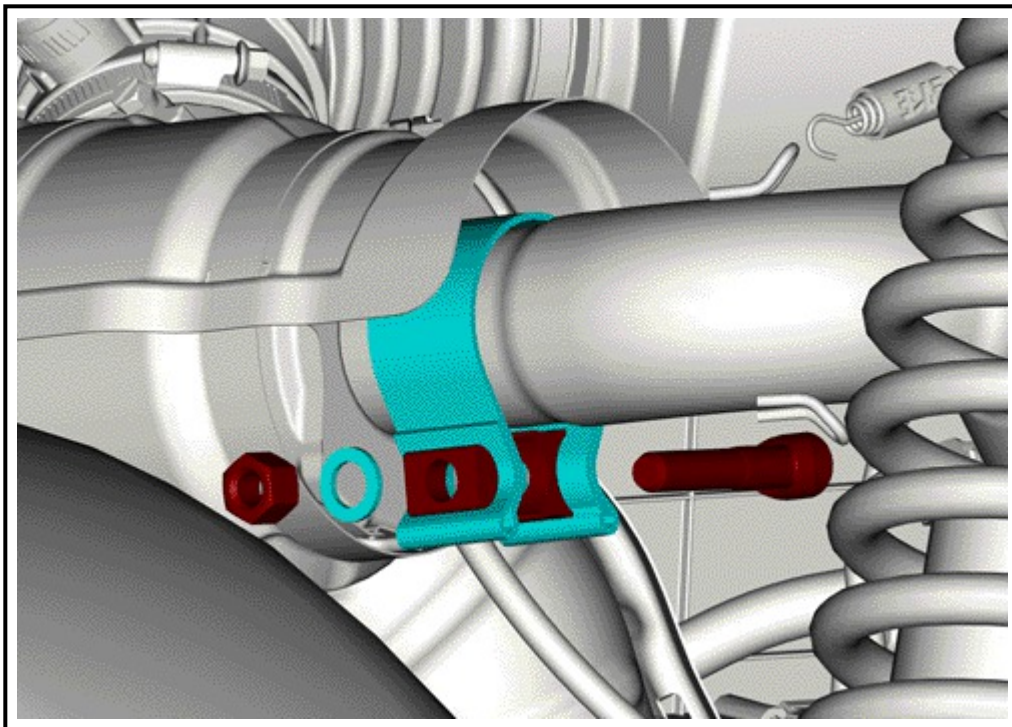


PARTS REMOVED FOR CLARITY

- 1. M8 X 25 Flanged hex screws
- 2. Large 8mm flat washers
- 3. M8 nuts

Tighten exhaust pipe clamp [P6] to specified torque.

tightening torque	
Exhaust pipe clamp	55 ± 8 N•m (41 ± 6 lbf•ft)



Reinstall any removed parts.

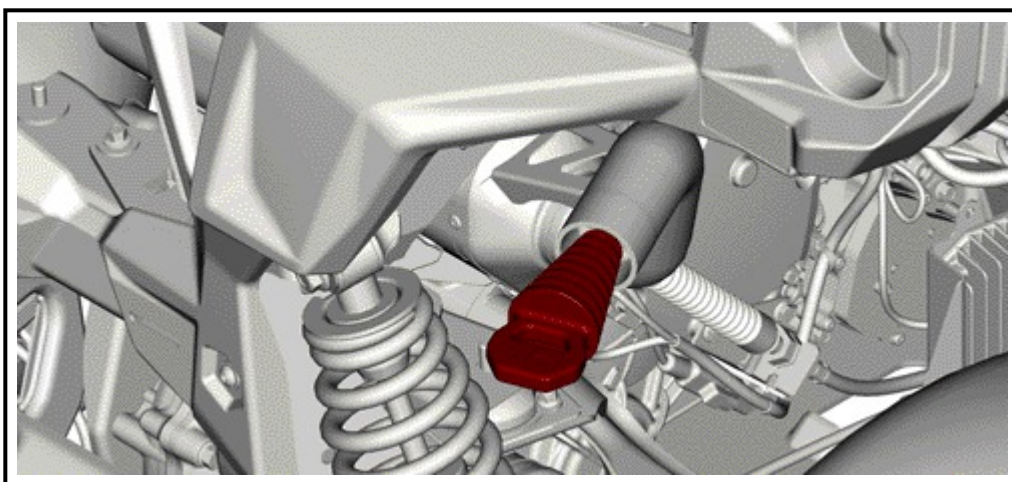
It is recommended that the muffler and tailpipe be wiped down with rubbing alcohol to remove oil and fingerprints. This will help prevent tarnishing of the finish after the exhaust is heated up.

Please note that after starting the vehicle, it is normal for a new exhaust system and muffler to emit smoke until oil residue burns off.

After the initial installation, break-in the muffler by idling for 5 minutes to maximize lifespan.

NOTE: When cleaning the vehicle, insert exhaust muffler plug

⚠ CAUTION: Wait until the vehicle has cooled down before inserting the plug. Remove before starting the engine.



SPARK ARRESTER CLEANING INFORMATION

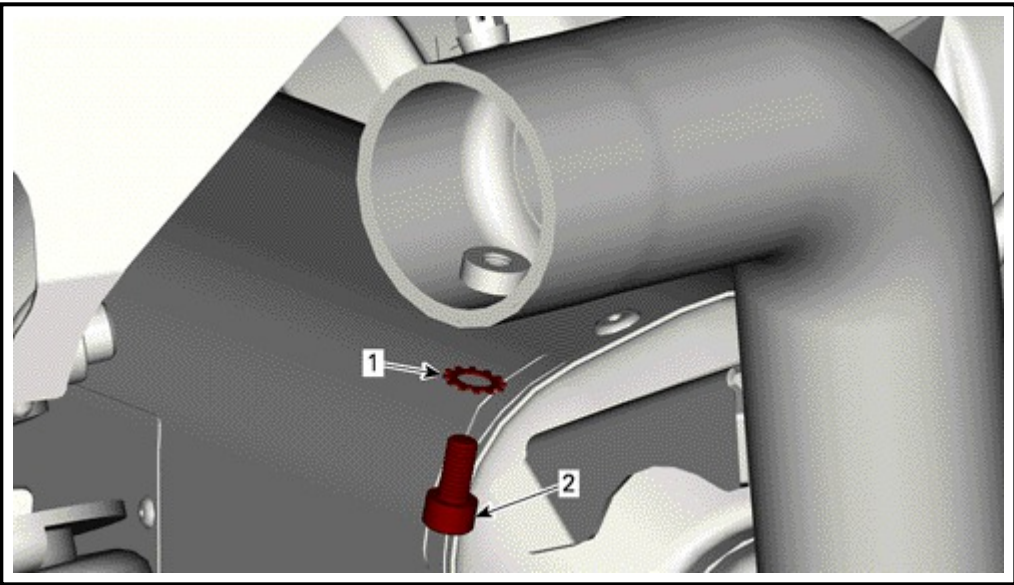
⚠ CAUTION: Muffler can be extremely hot. Let muffler cool down before removing spark arrester.

Please read through all instructions before beginning disassembly.

- Tools needed:
- Wire brush
 - Pair of gloves
 - Safety glasses

Cleaning steps:

1. Remove the M6 X 12 screw and M6 lock washer as illustrated.



1. M6 lock washer
2. M6 X 12 screw

2. Remove the spark arrester pipe tip .
3. Using a wire brush, remove carbon deposits from spark arrester screen. Inspect the screen for excessive wear or damage. If spark arrester is excessively worn or damaged, the spark arrester must be replaced. See *SERVICE PARTS* section.

⚠ CAUTION: Gloves and safety glasses should be worn while cleaning spark arrester.

4. Re-install spark arrester.

VERY IMPORTANT: Spark arrester must be reinstalled. Failure to do so will result in Yoshimura Slip on Exhaust Kit to be illegal and no longer USDA/USDF approved.

tightening torque	
M6 X 12 screw	10 ± 2 N•m (89 ± 18 lbf•in)

MAINTENANCE AND WARRANTY

MAINTENANCE AND OUT OF WARRANTY REPAIR

To maintain maximum sound and engine performance the muffler packing may need to be replaced every 1 600 km (1,000 mi). Failure to maintain the muffler packing may cause damage to the muffler and/or void the warranty. Regularly inspect the muffler and spark arrester for discoloration, cracks, or other signs of wear or damage caused by depleted muffler packing. Spark arrester inspection and muffler repack should be performed at the same time. Should your exhaust need inspection, repacking or become damaged outside of warranty coverage please contact Yoshimura’s Service Center at:

Yoshimura R&D

Yoshimura R&D
5420 Daniels Street
Chino, CA 91710
Yoshimura technical department- (800) 634-9166 / in CA (909) 628-4722.
technicalrequest@yoshimura-rd.com

WARRANTY REPAIR

Should your Yoshimura exhaust made for Can-Am have a manufacturer's defect covered by our warranty, please return it to your local Can-Am dealer along with proof of purchase so that they may repair or replace, at our option, without charge.
