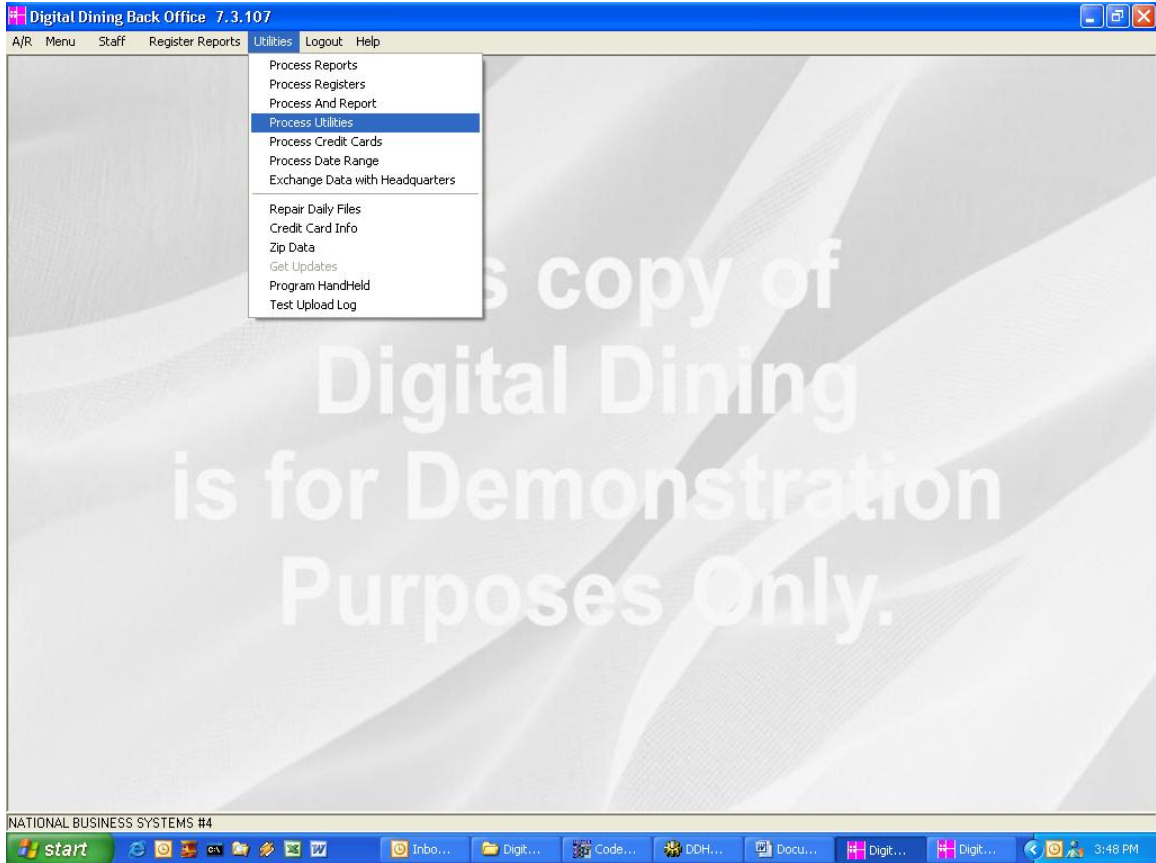


Process Utilities:



You use Process Utilities to manipulate previous day's data. It loads POS by the date you choose. You can do everything to a check that you can do on a normal day, except open a new check.

This copy of
Digital Dining
is for Demonstration
Purposes Only.

POS Date
02/17/2004
OK Exit

DIGITAL DINING

This copy of
Digital Dining
is for
Demonstration
Purposes Only



Table Check Reg Reports Reg Options Exit POS

You load the POS with you as the server being logged in. The “Register Options” you have set up determine the how much you can do. If you ever have a question as to what register options do what, refer to “Help” in Digital Dining Setup. As versions are changed, new options are added that may not have been accessible to you before.